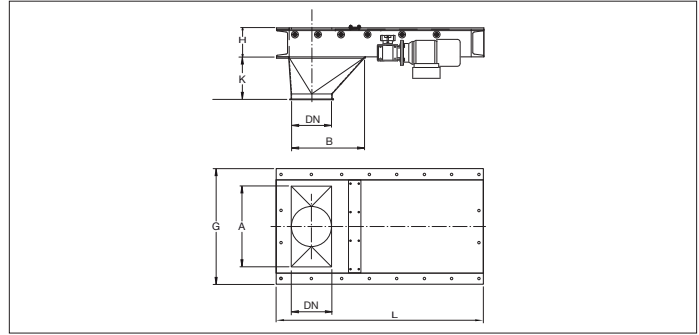


BADT Electric Redler outlet gates



BADT Electric Redler outlet gates

Full welded pneumatic Redler outlet gates to discharge material from a cyclone, a silo, or such. The gate blade is mounted on roller bearings and the base frame is 5 mm thick.

The outlet gate blade is secured in an open or closed position by means of the electric worm gear drive motor 0.18 kW, 230/400 V AC 50/60 Hz foreseen with limit switches.

Suitable for applications with bulk material but not for installations in overpressure or pneumatic transport.

The gate must be installed horizontally.

Material

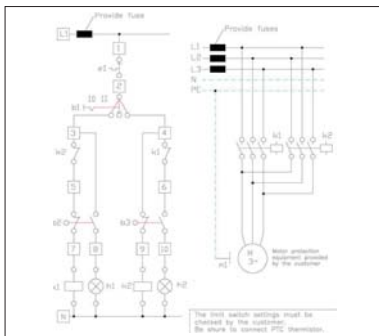
2.00 mm black steel 1.0330 powder coated in RAL 7032.
Base frame 5.00 mm black steel 1.0330 powder coated in RAL 7032.
Electrostatically conductive and food-safe powder coating thickness of 30 to 60 µm.
Temperature resistance up to +80°C.

Type

Welded and folded plates with or without 6 mm edges for lock rings.

Options

- FDA and EU compliant food-grade quality
- with seal
- left and right hand versions
- hot-dipped galvanized or stainless steel execution
- wear resistant lining as of Ø150 (83° Shore)
- equipotential equalization or ATEX
- other colors
- other types of edges or connections



Wiring diagram of worm gear drive

* Weights are models with transition piece

Ø d mm	Code w. transition	Code w/o. transition	A mm	B mm	G mm	H mm	K mm	L mm	s mm	Weight kg*
150	BADT000001	BADT000006	450	333	580	126	174	850	2.00	65.00
175	BADT000002	BADT000007	450	333	580	126	174	850	2.00	70.20
200	BADT000003	BADT000008	600	383	740	126	274	950	2.00	90.00
250	BADT000004	BADT000009	600	433	740	126	274	1050	2.00	97.00
300	BADT000005	BADT000010	600	453	740	126	274	1080	2.00	105.00

! Please specify LEFT or RIGHT orientation when ordering