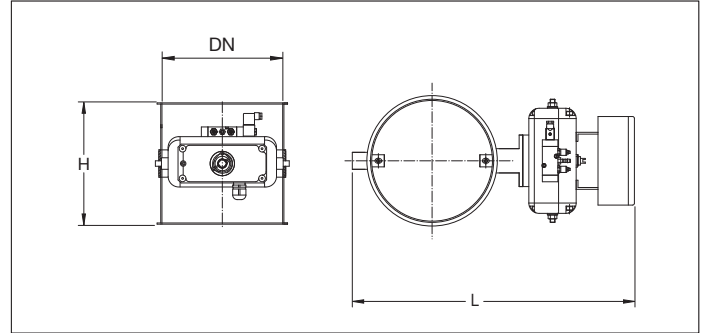


BADK Pneumatic throttle valves with seal



BADK Pneumatic throttle valves with seal

Full welded pneumatic throttle valves with integrated silicone seal in the body to open or close a ducting line in an installation (no possibility to regulate).

The throttle valve blade is secured in an open or closed position by means of the rotating actuator foreseen with limit switches and controlled by 5/2 monostable solenoid valve 24 V DC.

Material

2.00 mm black steel 1.0330 powder coated in RAL 7032. Electrostatically conductive and food-safe powder coating thickness of 30 to 60 µm. Temperature resistance up to +80°C. With integrated silicone seal.

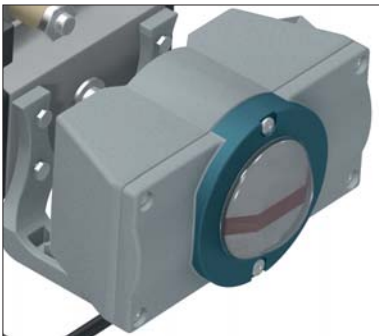
Type

Rolled sheets with 6 mm edges for lock rings.

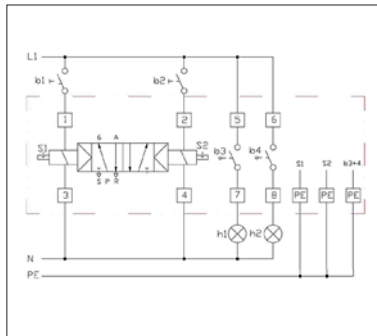
Options

- FDA and EU compliant food-grade quality
- other seals (NBR or EPDM)
- other voltage : 220 V AC
- stainless steel execution
- wear resistant lining as of Ø150 (83° Shore)
- equipotential equalization or ATEX
- other colors
- other diameters
- other types of edges or connections

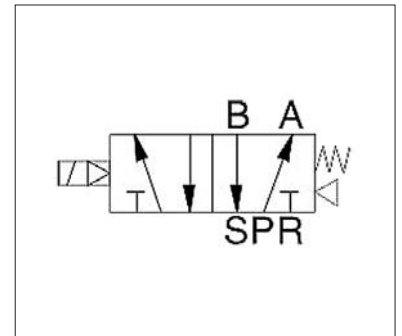
Max. air pressure in solenoid valve :
! 8 Bar.



Visual position indicator on top of unit



Wiring diagram of position indicator



Wiring diagram of NAMUR solenoid valve

Ø d mm	Code	L mm	H mm	s mm	Weight kg
100	BADK000053	425	100	2.00	1.23
120	BADK000054	445	120	2.00	1.50
140	BADK000055	460	140	2.00	1.83
150	BADK000056	475	150	2.00	2.01
160	BADK000057	485	160	2.00	2.21
175	BADK000058	500	175	2.00	2.52
200	BADK000059	525	200	2.00	3.11
224	BADK000060	545	200	2.00	3.48
250	BADK000061	575	200	2.00	3.90
280	BADK000062	625	200	2.00	4.40
300	BADK000063	645	200	2.00	4.75
315	BADK000064	660	200	2.00	5.01
350	BADK000065	695	200	2.00	5.66
400	BADK000066	745	200	2.00	6.63