

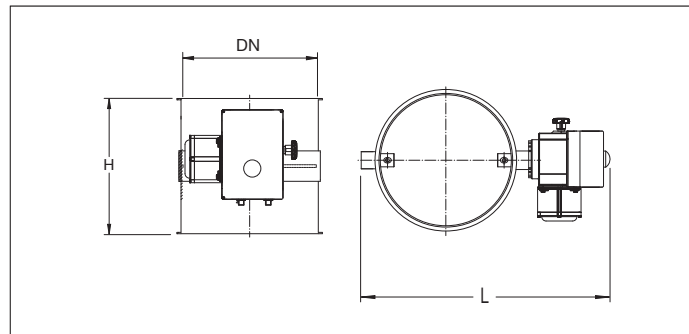
BADL Electric throttle valves with seal



BADL Electric throttle valves with seal

Full welded electric throttle valves with integrated silicone seal in the body to open or close a ducting line in an installation (no possibility to regulate).

The throttle valve blade is secured in a desired position by means of the electric actuator drive with limit switches in 220 V AC.



Material

2.00 mm black steel 1.0330 powder coated in RAL 7032.
Electrostatically conductive and food-safe powder coating thickness of 30 to 60 µm.
Temperature resistance up to +80°C.
With integrated silicone seal.

Type

Rolled sheets with 6 mm edges for lock rings.

Options

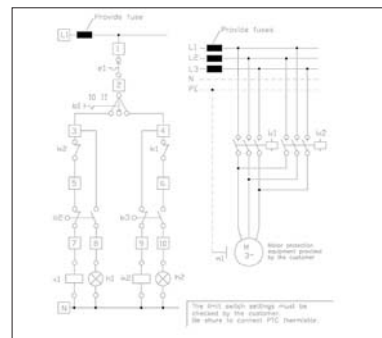
- FDA and EU compliant food-grade quality
- other seals (NBR or EPDM)
- stainless steel execution
- wear resistant lining as of Ø150 (83° Shore)
- equipotential equalization or ATEX
- other colors
- other diameters
- other types of edges or connections



Visual position indicator on top of unit



Manual override knob



Wiring diagram of electric switch box

Ø d mm	Code	L mm	H mm	s mm	Weight kg
100	BADL000053	377	100	2.00	1.23
120	BADL000054	397	120	2.00	1.50
140	BADL000055	413	140	2.00	1.83
150	BADL000056	427	150	2.00	2.01
160	BADL000057	437	160	2.00	2.21
175	BADL000058	452	175	2.00	2.52
200	BADL000059	477	200	2.00	3.11
224	BADL000060	497	200	2.00	3.48
250	BADL000061	527	200	2.00	3.90
280	BADL000062	556	200	2.00	4.40
300	BADL000063	577	200	2.00	4.75
315	BADL000064	591	200	2.00	5.01
350	BADL000065	627	200	2.00	5.66
400	BADL000066	677	200	2.00	6.63