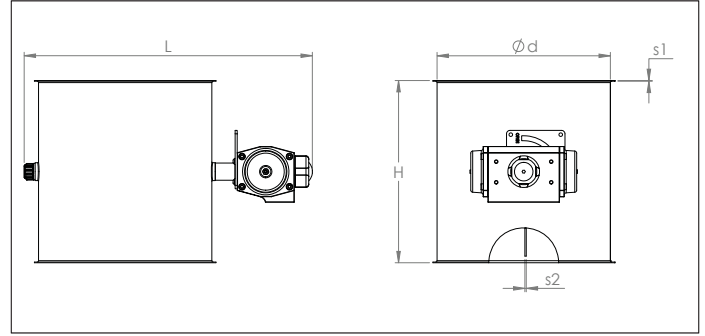


AADK Pneumatic throttle valves without seal



AADK Pneumatic throttle valves without seal

Longitudinally stitch-welded throttle valves with a material thickness of 1 mm with an inner blade with a material thickness of 3 mm for use in overpressure, under-pressure and pressureless systems.

The change in direction of the blade is operated by a pneumatic rotating actuator connected to a monostable 5/2 NAMUR solenoid valve.

Axle seals are used to the valve blade for better airtightness.

Material

Sendzimir galvanized DX51 DZ 275 MAC.

Type

Rolled sheets, stitch-welded, with 6 mm edges for lock rings. Provided with pneumatic cylinder and solenoid valve.

Options

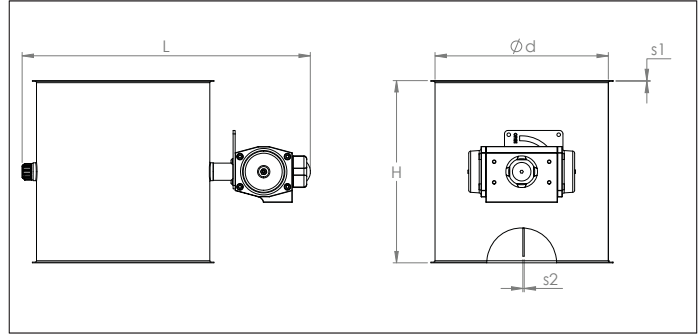
- execution without seal
- other diameters
- other sheet thicknesses depending on diameter and length
- other types of actuator (ATEX)
- position indicator
- other types of edges or connections

! Max. air pressure in solenoid valve and cylinder : 8 Bar
Use only oil free dry air

! Please state the voltage when ordering:
24 V AC, 24 V DC, 220 V AC.

| Ø | Code | L mm | H mm | s1 mm | s2 mm | Weight kg |
|-----|------------|---------|---------|----------|----------|--------------|
| 80 | AADK000139 | 250 | 95 | 0.88 | 3.00 | 2.51 |
| 100 | AADK000140 | 270 | 115 | 0.88 | 3.00 | 2.63 |
| 120 | AADK000141 | 290 | 135 | 0.88 | 3.00 | 2.80 |
| 125 | AADK000142 | 295 | 140 | 0.88 | 3.00 | 2.84 |
| 140 | AADK000143 | 310 | 155 | 0.88 | 3.00 | 3.07 |
| 150 | AADK000144 | 320 | 165 | 0.88 | 3.00 | 3.16 |
| 160 | AADK000145 | 330 | 175 | 0.88 | 3.00 | 3.26 |
| 180 | AADK000146 | 350 | 195 | 0.88 | 3.00 | 3.62 |
| 200 | AADK000147 | 370 | 215 | 0.88 | 3.00 | 3.86 |
| 225 | AADK000148 | 395 | 240 | 0.88 | 3.00 | 4.33 |
| 250 | AADK000149 | 420 | 265 | 0.88 | 3.00 | 4.82 |
| 275 | AADK000150 | 445 | 290 | 0.88 | 3.00 | 5.37 |
| 280 | AADK000151 | 450 | 295 | 0.88 | 3.00 | 5.46 |
| 300 | AADK000152 | 470 | 315 | 0.88 | 3.00 | 5.97 |
| 315 | AADK000153 | 485 | 330 | 0.88 | 3.00 | 6.35 |
| 350 | AADK000154 | 520 | 365 | 0.88 | 3.00 | 7.32 |
| 400 | AADK000155 | 570 | 415 | 0.88 | 3.00 | 8.88 |
| 450 | AADK000156 | 632 | 465 | 0.88 | 3.00 | 12.50 |
| 500 | AADK000157 | 682 | 515 | 0.88 | 3.00 | 14.70 |
| 550 | AADK000158 | 732 | 565 | 0.88 | 3.00 | 17.20 |
| 600 | AADK000159 | 782 | 615 | 0.88 | 3.00 | 19.90 |
| 630 | AADK000160 | 812 | 645 | 0.88 | 3.00 | 21.60 |
| 650 | AADK000161 | 832 | 665 | 0.88 | 3.00 | 22.80 |
| 700 | AADK000165 | 882 | 715 | 0.88 | 3.00 | 25.90 |
| 750 | AADK000166 | 932 | 765 | 0.88 | 3.00 | 29.20 |
| 800 | AADK000167 | 982 | 815 | 0.88 | 3.00 | 32.70 |

AADK Pneumatic throttle valves with seal



AADK Pneumatic throttle valves with seal

Longitudinally stitch-welded throttle valves with a material thickness of 1 mm with an inner blade with a material thickness of 3 mm for use in overpressure, under-pressure and pressureless systems.

The change in direction of the blade is operated by a pneumatic rotating actuator connected to a monostable 5/2 NAMUR solenoid valve.

Axle seals are used and a natural rubber seal is applied to the valve blade for better airtightness.

! Max. air pressure in solenoid valve and cylinder : 8 Bar
Use only oil free dry air

! Please state the voltage when ordering:
24 V AC, 24 V DC, 220 V AC.

Material

Sendzimir galvanized DX51 DZ 275 MAC and EPDM blade seal.

Type

Rolled sheets, stitch-welded, with 6 mm edges for lock rings. Provided with pneumatic cylinder and solenoid valve.

Options

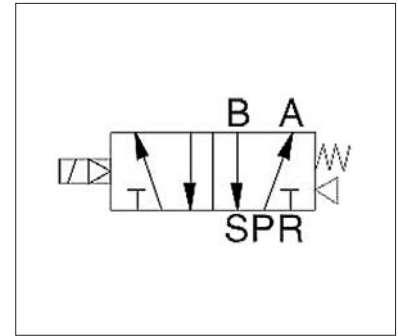
- execution without seal
- other diameters
- other sheet thicknesses depending on diameter and length
- other valve seals, for example silicone, NBR, etc.
- other types of actuator (ATEX)
- position indicator
- other types of edges or connections



Visual indicator mounted on axle to indicate throttle valve position



Optional position detector



Wiring diagram of NAMUR solenoid valve

| Ø | Code | L mm | H mm | s1 mm | s2 mm | Weight kg |
|-----|------------|---------|---------|----------|-----------------|--------------|
| 80 | AADK000168 | 250 | 95 | 0.88 | 2 x 1.00 + seal | 2.51 |
| 100 | AADK000169 | 270 | 115 | 0.88 | 2 x 1.00 + seal | 2.63 |
| 120 | AADK000170 | 290 | 135 | 0.88 | 2 x 1.00 + seal | 2.80 |
| 125 | AADK000171 | 295 | 140 | 0.88 | 2 x 1.00 + seal | 2.84 |
| 140 | AADK000172 | 310 | 155 | 0.88 | 2 x 1.00 + seal | 3.07 |
| 150 | AADK000173 | 320 | 165 | 0.88 | 2 x 1.00 + seal | 3.16 |
| 160 | AADK000174 | 330 | 175 | 0.88 | 2 x 1.00 + seal | 3.26 |
| 180 | AADK000175 | 350 | 195 | 0.88 | 2 x 1.00 + seal | 3.62 |
| 200 | AADK000176 | 370 | 215 | 0.88 | 2 x 1.00 + seal | 3.86 |
| 225 | AADK000177 | 395 | 240 | 0.88 | 2 x 1.00 + seal | 4.33 |
| 250 | AADK000178 | 420 | 265 | 0.88 | 2 x 1.00 + seal | 4.82 |
| 275 | AADK000179 | 445 | 290 | 0.88 | 2 x 1.00 + seal | 5.37 |
| 280 | AADK000180 | 450 | 295 | 0.88 | 2 x 1.00 + seal | 5.46 |
| 300 | AADK000181 | 470 | 315 | 0.88 | 2 x 1.00 + seal | 5.97 |
| 315 | AADK000182 | 485 | 330 | 0.88 | 2 x 1.00 + seal | 6.35 |
| 350 | AADK000183 | 520 | 365 | 0.88 | 2 x 1.00 + seal | 7.32 |
| 400 | AADK000184 | 570 | 415 | 0.88 | 2 x 1.00 + seal | 8.88 |