

1 Choose your flexible hose connector :

CAZA with CAEB

1

CZZA or
CZZB

2

2 Choose your cane :

10

CZZM

CZZL

11

CZZK

9

3 Choose your accessories :

CZZC*

4

CZZK

9

CZZJ

12

CZZH*

7

CZZF*

5

CZZG*

6

*BE CAREFUL : the accessories do not connect directly onto the flexible hose connectors

High vacuum accessory kits



KIT - FLOOR

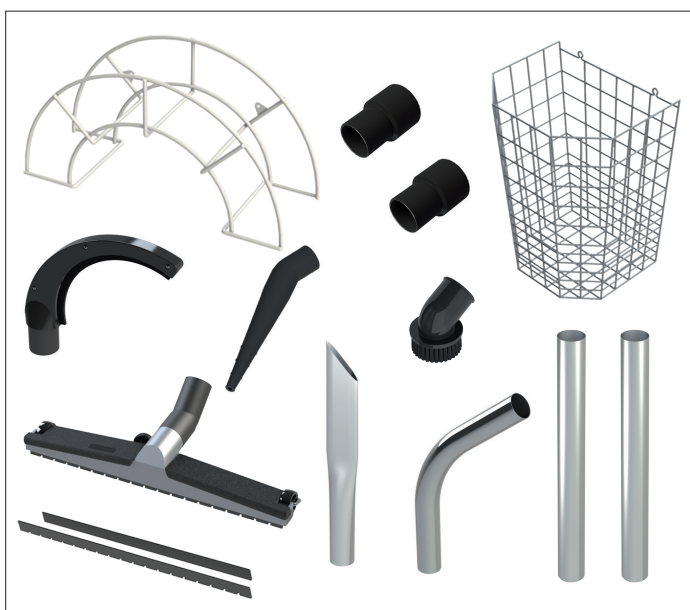
Accessory kit for floor cleaning composed of :

- CZZW hose reel
- CZZA flexible hose connector for PVSM (#2)
- CZZB flexible hose connector for PU (#2)
- CZZM suction cane (#10)
- CZZC floor nozzle (#4)
- CZZE rubber strips for floor nozzle

KIT - MACHINE

Accessory kit for machine cleaning composed of :

- CZZW hose reel
- CZZA flexible hose connector for PVSM (#2)
- CZZB flexible hose connector for PU (#2)
- CZZX accessory basket
- CZZG sickle nozzle (#6)
- CZZF round brush nozzle (#5)
- CZZH point nozzle (#7)
- CZZJ slit nozzle (#12)
- CZZL chromate suction bend (#11)
- 2 CZZK suction pipes (#9)

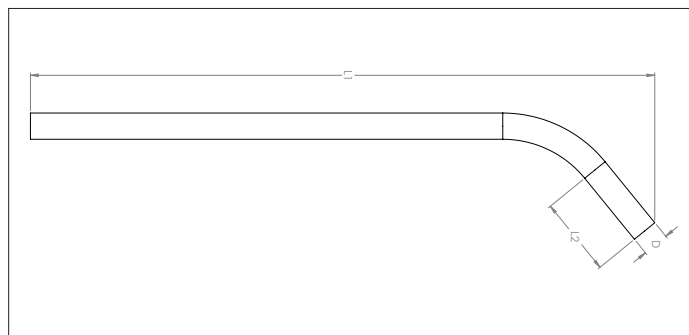


KIT - TOTAL

Total accessory kit for cleaning composed of :

- CZZW hose reel
- CZZA flexible hose connector for PVSM (#2)
- CZZB flexible hose connector for PU (#2)
- CZZX accessory basket
- CZZG sickle nozzle (#6)
- CZZF round brush nozzle (#5)
- CZZH point nozzle (#7)
- CZZJ slit nozzle (#12)
- CZZC floor nozzle (#4)
- CZZE rubber strips for floor nozzle
- CZZL chromate suction bend (#11)
- 2 CZZK suction pipes (#9)

CZZM Suction cane with bend



CZZM Suction cane with bend

Connects onto the accessories on one side and onto a flexible hose connector on the other (CAZA, CZZA, CZZB).

Material

Chromate steel.

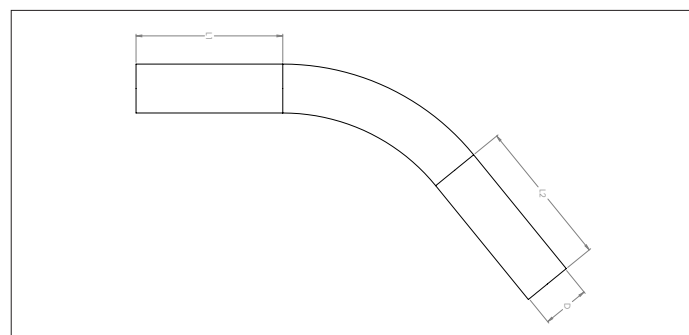
Type

With straight edges for a good connection to the accessories.

Ø d	Code	L1 mm	L2 mm	Weight kg
38	CZZM000001	1240	115	1.10
50	CZZM000002	1190	150	1.60

* Ø38 is in two parts

CZZL Suction bend



CZZL Suction bend

Connects onto the accessories on one side and onto a flexible hose connector on the other (CAZA, CZZA, CZZB).

Material

Chromate steel.

Type

With straight edges for a good connection to the accessories.

Ø d	Code	L1 mm	L2 mm	Weight kg
32	CZZL000001	150	240	0.30
38	CZZL000002	150	240	0.34
50	CZZL000003	190	190	0.63

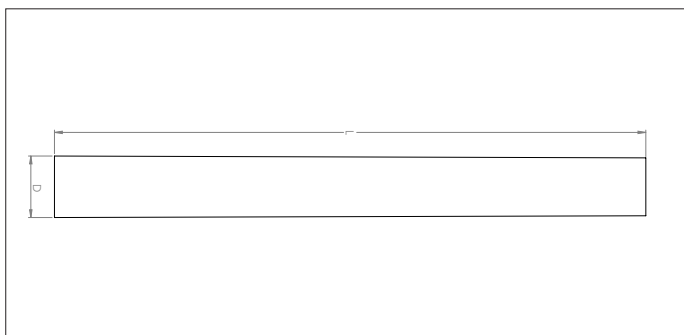
CZZK Suction cane



CZZK Suction cane

Short straight suction cane. Two of these are needed to make one long cane that can connect to the CZZL suction bend.

It can also be used directly onto the accessories on one side and onto a flexible hose connector on the other (CAZA, CZZA, CZZB).



Material

Chromate steel.

Type

With straight edges for a good connection to the accessories.

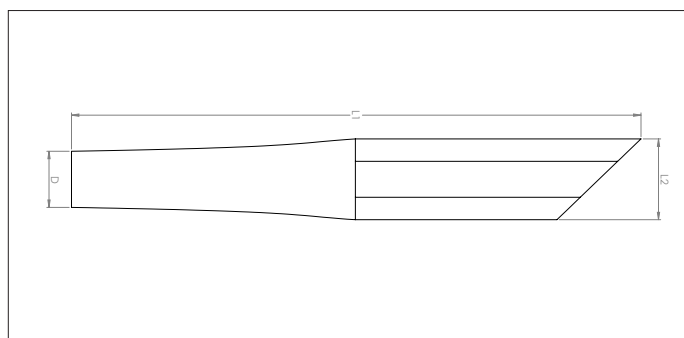
Ø d	Code	L mm	Weight kg
32	CZZK000001	468	0.34
38	CZZK000002	468	0.34
50	CZZK000003	500	0.64

CZZJ Slit nozzle



CZZJ Slit nozzle

Connects onto the chromate suction pipes or directly onto a flexible hose connector (CAZA, CZZA, CZZB).



Material

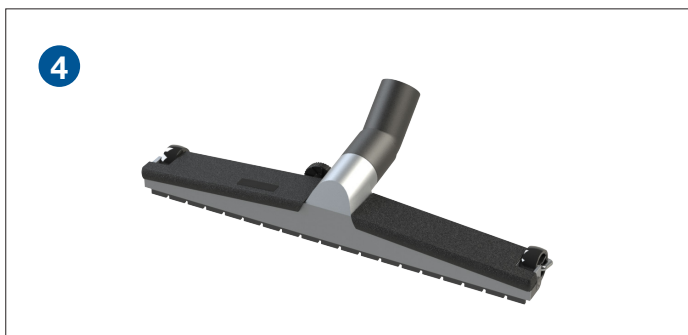
Chromate steel.

Type

With straight edge for a good connection to the suction pipes.

Ø d	Code	L1 mm	L2 mm	Weight kg
32	CZZJ000001	284	55	0.20
38	CZZJ000002	284	55	0.20
50	CZZJ000003	496	62	0.50

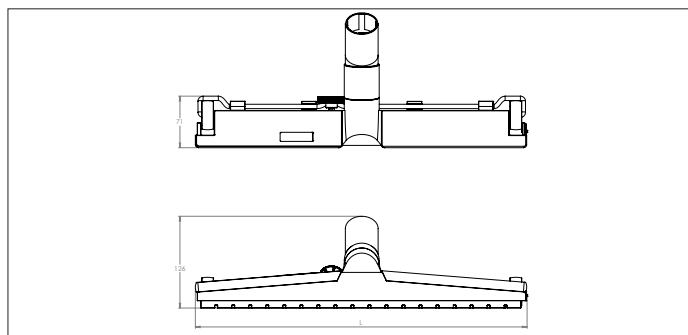
CZZC Floor nozzle



CZZC Floor nozzle

Floor nozzle with brush strips and wheels. Connects onto chromate suction pipes CZZK, CZZL or CZZM.

The wheels and brush strips can be replaced.

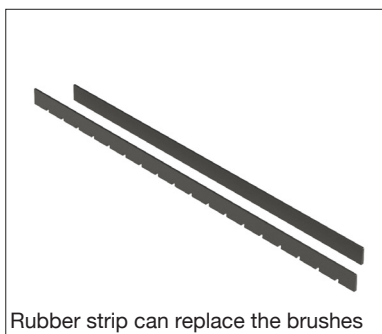


Material

Aluminum and plastic.

Type

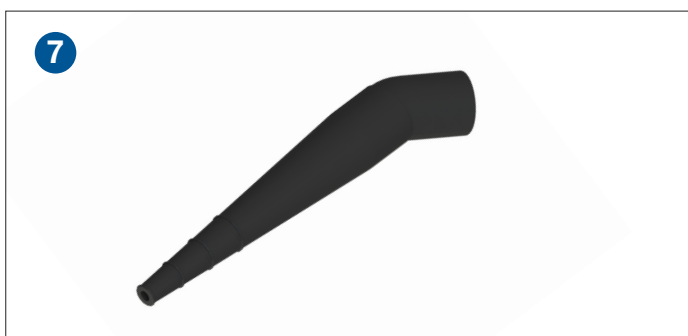
With straight edge for a good connection to the suction pipes.



Rubber strip can replace the brushes

Ø d	Code	L mm	Weight kg
32	CZZC000001	300	0.52
38	CZZC000002	456	0.97
50	CZZC000003	456	0.97

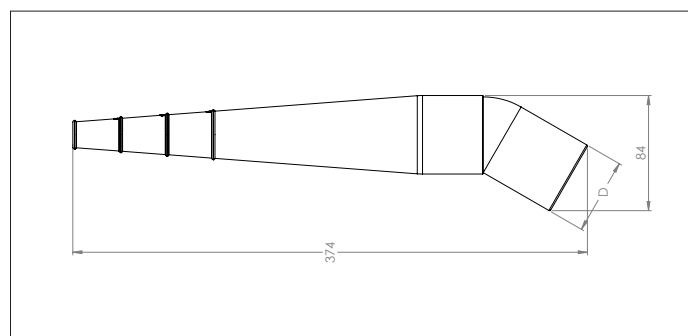
CZZH Point nozzle



CZZH Point nozzle

Rubber nozzle with plastic connection piece. Connects onto chromate suction pipes CZZK, CZZL or CZZM.

NOT antistatic.



Material

Plastic and rubber.

Type

With straight edge for a good connection to the suction pipes.

Ø d	Code	L1 mm	L2 mm	Weight kg
38	CZZH000001	374	51	0.25
50	CZZH000002	374	51	0.25

CZZF Round brush nozzle

5

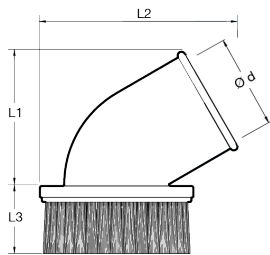


CZZF Round brush nozzle

Designed to clean on small surfaces, on tools or in corners.

Connects onto chromate suction pipes CZZK, CZZL or CZZM.

NOT antistatic.



Material

Shockproof polypropylene.

Type

With straight edge for a good connection to the suction pipes.

Ø d	Code	L1 mm	L2 mm	L3 mm	Weight kg
32	CZZF000001	70	92	38	0.05
38	CZZF000002	70	92	38	0.05
50	CZZF000003	90	165	35	0.14

CZZG Sickle nozzle

6

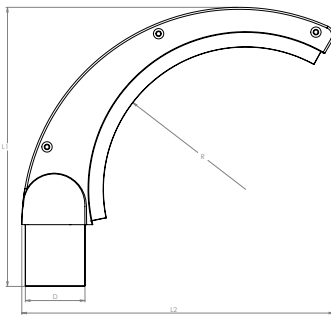


CZZG Sickle nozzle

Designed to clean the upper part of round components where dust could accumulate.

Connects onto chromate suction pipes CZZK, CZZL or CZZM.

NOT antistatic.



Material

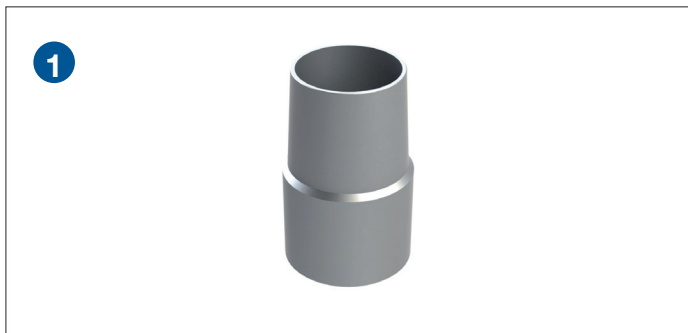
Shockproof polypropylene.

Type

With straight edge for a good connection to the suction pipes.

Ø d	Code	L1 mm	L2 mm	L3 mm	Weight kg
38	CZZG000001	197	220	1000	0.15
50	CZZG000002	197	220	1000	0.15

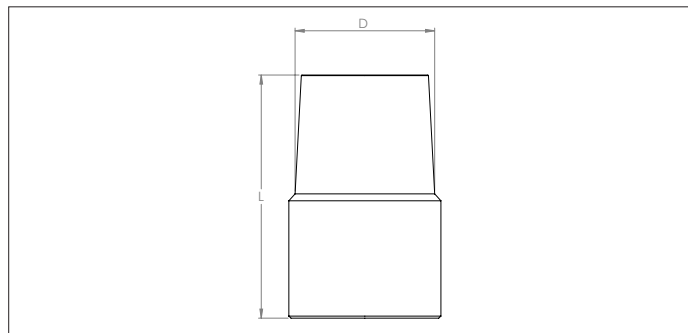
CAZA Metal hose connector



CAZA Metal hose connector

Designed to connect flexible hoses to the cleaning accessories.

It has a groove in which the CAEB or CBEB flexible hose connector can be inserted. The other side is slightly conical to fit inside chromate suction pipes CZZK, CZZL or CZZM.



Material

Electro-galvanized steel.

Type

With straight edge for a good connection to the suction pipes.

Ø d	Code	L mm	Weight kg
38	CAZA000001	100	0.25
50	CAZA000002	88	0.27

CZZA Flexible hose connector

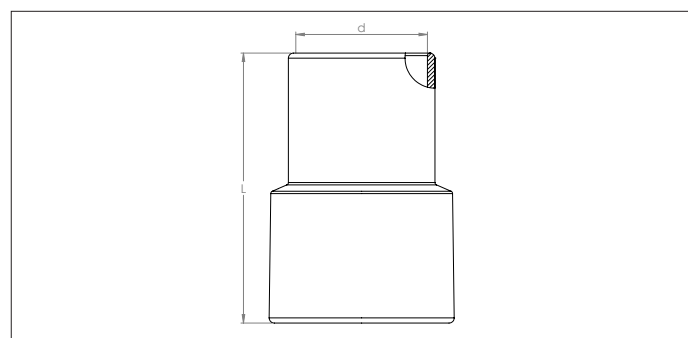


CZZA Flexible hose connector

Rubber Flexible hose connector designed to connect the accessories to the FBAA flexible hoses.

It is threaded on one side to screw onto the flexible hose. The other side fits onto suction pipes CZZK, CZZL or CZZM.

Antistatic PE R < 10⁶ Ω/cm.



Material

Antistatic rubber.

Type

With thread to screw onto flexible hose.

Ø d	Code	L mm	Weight kg
32	CZZA000001	95	0.04
38	CZZA000002	95	0.05
50	CZZA000003	105	0.09

CZZB Flexible hose connector

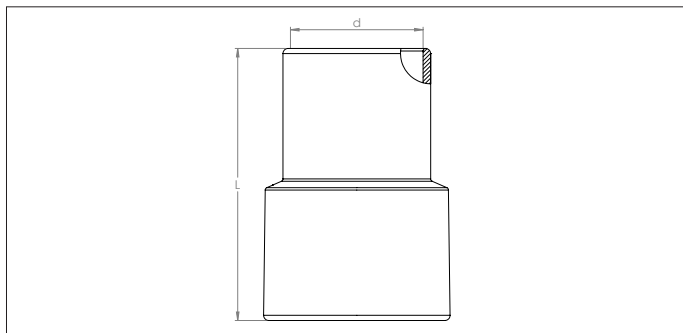


CZZB Flexible hose connector

Rubber Flexible hose connector designed to connect the accessories to the PU flexible hoses.

It is threaded on one side to screw onto the flexible hose. The other side fits onto suction pipes CZZK, CZZL or CZZM.

Antistatic PE $R < 10^6 \Omega/\text{cm}$.



Material

Antistatic rubber.

Type

With thread to screw onto flexible hose.

Ø d	Code	L mm	Weight kg
38	CZZB000001	95	0.05
50	CZZB000002	105	0.09

CZZA Flexible hose connector

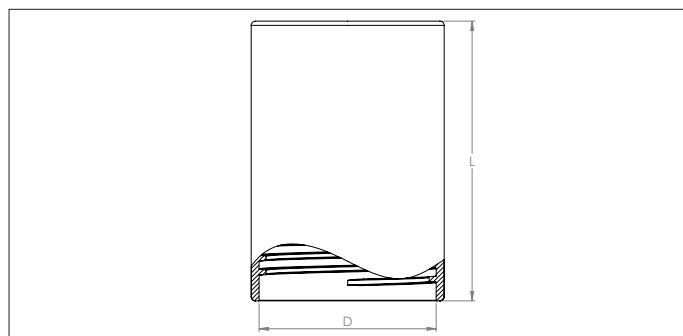


CZZA Flexible hose connector

Rubber Flexible hose connector designed to connect two FBAA flexible hoses together.

It is threaded on both sides to screw onto the flexible hoses.

Antistatic PE $R < 10^6 \Omega/\text{cm}$.



Material

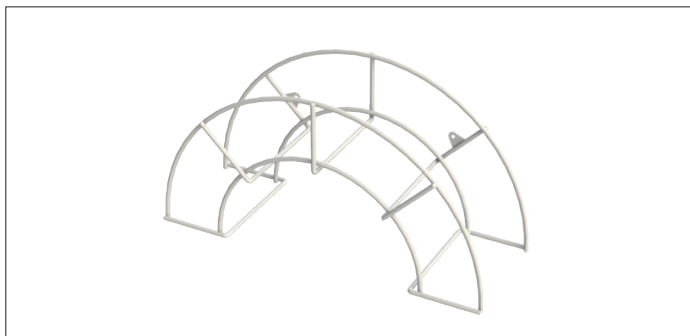
Antistatic rubber.

Type

With thread to screw onto flexible hoses.

Ø d	Code	L mm	Weight kg
38	CZZA900008	90	0.06
50	CZZA900009	100	0.10

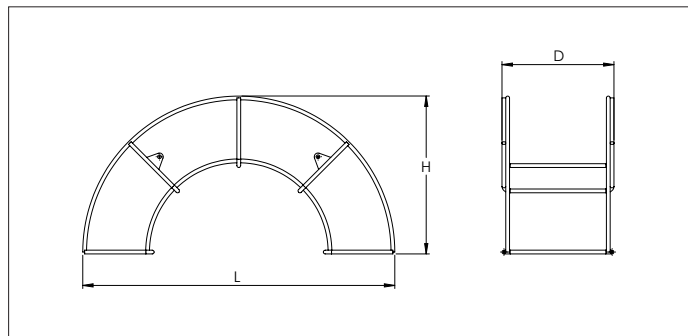
CZZW Hose reel



CZZW Hose reel

To be fastened on a wall with two screws.

It can support a 10m Ø38 flexible hose or a 6 m Ø50 flexible hose.



Material

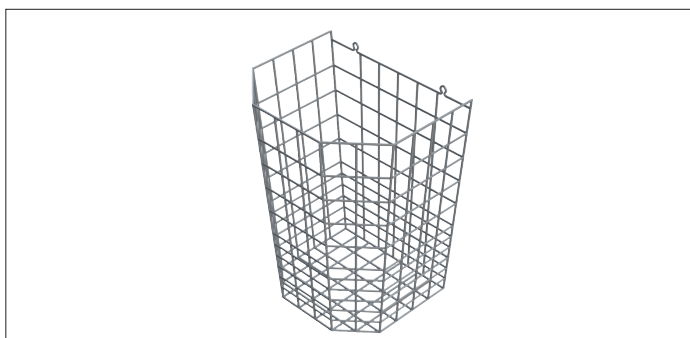
Metal with plastic coating.

Type

For flexible hoses Ø38 & Ø50.

Code	L mm	H mm	D mm	Weight kg
CZZW000001	490	250	160	0.30

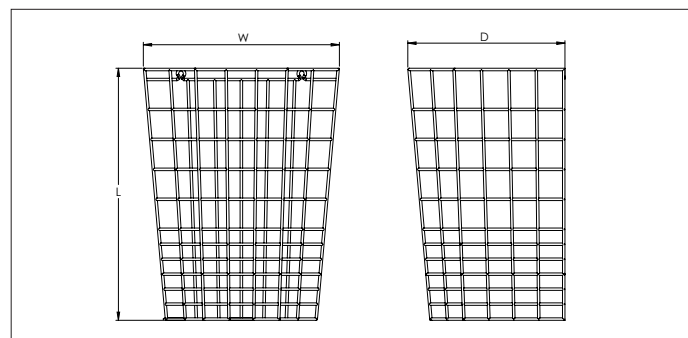
CZZX Accessories basket



CZZX Accessories basket

To be fastened on a wall with two screws.

Designed to hold the cleaning accessories in this catalogue.



Material

Metal with plastic coating.

Type

For accessories in Ø38 & Ø50.

Code	L mm	W mm	D mm	Weight kg
CZZX000001	360	320	240	0.50