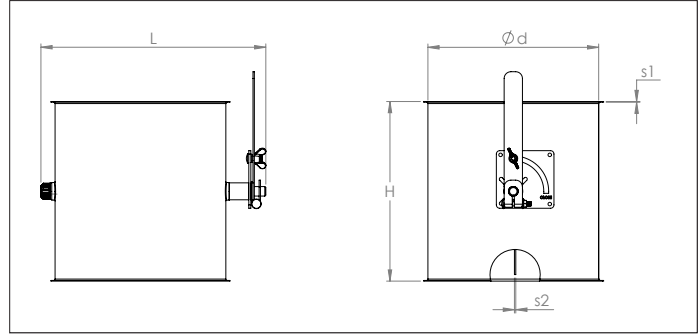
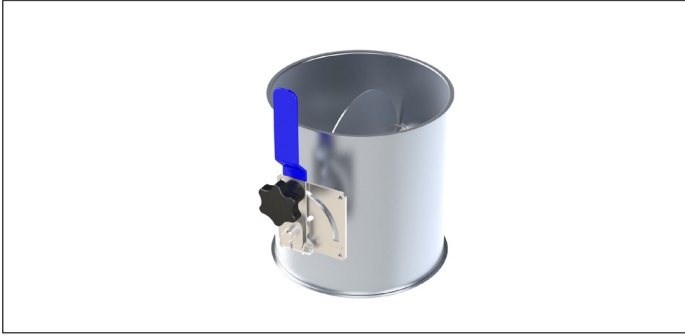


AADJ manual throttle valves



AADJ manual throttle valves

Longitudinally stitch-welded throttle valves with a material thickness of 1 mm with an inner blade with a material thickness of 3 mm for use in overpressure, under-pressure and pressureless systems.

The throttle valves have a regulating handle with star-knob to secure the blade in a fixed position.

Axle seals are used along the axle ends for better airtightness.

Material

Sendzimir galvanized DX51 DZ 275 MAC.

Type

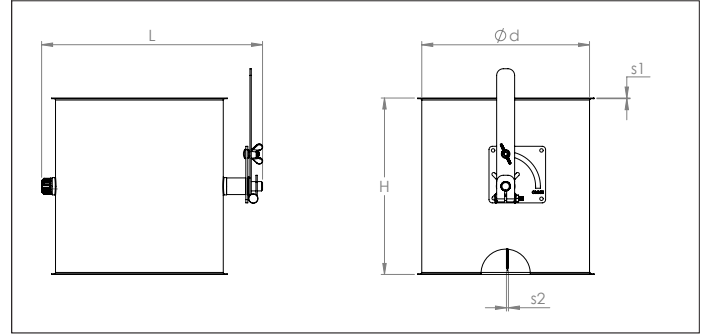
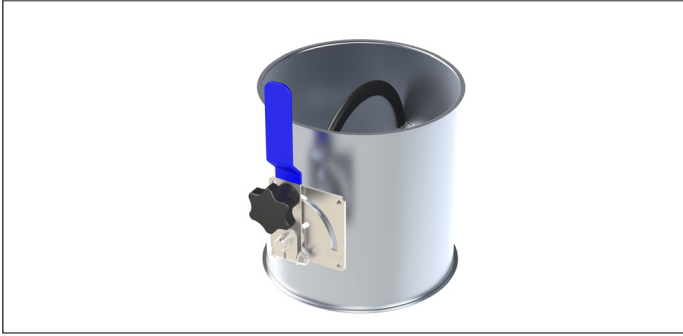
Rolled sheets, stitch-welded, with 6 mm edges for lock rings. Provided with regulating handle with star-knob.

Options

- other diameters
- other sheet thicknesses depending on diameter and length
- other types of edges or connections

Ø	Code	L mm	H mm	s1 mm	s2 mm	Weight kg
80	AADJ000001	162	95	0.88	3.00	0.81
100	AADJ000002	182	115	0.88	3.00	0.93
120	AADJ000003	202	135	0.88	3.00	1.10
125	AADJ000040	207	140	0.88	3.00	1.14
140	AADJ000004	222	155	0.88	3.00	1.37
150	AADJ000005	232	165	0.88	3.00	1.46
160	AADJ000006	242	175	0.88	3.00	1.56
180	AADJ000007	262	195	0.88	3.00	1.92
200	AADJ000008	282	215	0.88	3.00	2.16
225	AADJ000009	307	240	0.88	3.00	2.63
250	AADJ000010	332	265	0.88	3.00	3.12
275	AADJ000011	357	290	0.88	3.00	3.67
280	AADJ000041	362	295	0.88	3.00	3.76
300	AADJ000012	382	315	0.88	3.00	4.27
315	AADJ000013	397	330	0.88	3.00	4.65
350	AADJ000014	432	365	0.88	3.00	5.62
400	AADJ000015	482	415	0.88	3.00	7.18
450	AADJ000016	552	465	1.25	3.00	8.44
500	AADJ000017	602	515	1.25	3.00	9.80
550	AADJ000018	652	565	1.25	3.00	11.25
600	AADJ000019	702	615	1.25	3.00	12.80
630	AADJ000020	732	645	1.25	3.00	13.77
650	AADJ000021	752	665	1.25	3.00	14.44
700	AADJ000042	802	715	1.25	3.00	16.18
750	AADJ000043	852	765	1.25	3.00	18.00
800	AADJ000044	902	815	1.25	3.00	19.93

AADJ manual throttle valves with seal



AADJ manual throttle valves with seal

Longitudinally stitch-welded throttle valves with a material thickness of 1 mm with an inner blade with with seal with a material thickness of 3 mm for use in overpressure, under-pressure and pressureless systems.

The throttle valves have a regulating handle with star-knob to secure the blade in a fixed position.

Axle seals are used and a natural rubber seal is applied to the valve blade for better airtightness.

Material

Sendzimir galvanized DX51 DZ 275 MAC and EPDM blade seal.

Type

Rolled sheets, stitch-welded, with 6 mm edges for lock rings. Provided with regulating handle with star-knob.

Options

- other diameters
- other sheet thicknesses depending on diameter and length
- other valve seals, for example silicone, NBR, etc.
- other types of edges or connections

Ø	Code	L mm	H mm	s1 mm	s2 mm	Weight kg
80	AADJ000025	162	95	0.88	2 x 1.00 + seal	0.78
100	AADJ000026	182	115	0.88	2 x 1.00 + seal	0.88
120	AADJ000027	202	135	0.88	2 x 1.00 + seal	1.03
125	AADJ000046	207	140	0.88	2 x 1.00 + seal	1.06
140	AADJ000028	222	155	0.88	2 x 1.00 + seal	1.26
150	AADJ000029	232	165	0.88	2 x 1.00 + seal	1.34
160	AADJ000030	242	175	0.88	2 x 1.00 + seal	1.42
180	AADJ000031	262	195	0.88	2 x 1.00 + seal	1.74
200	AADJ000032	282	215	0.88	2 x 1.00 + seal	1.94
225	AADJ000033	307	240	0.88	2 x 1.00 + seal	2.34
250	AADJ000034	332	265	0.88	2 x 1.00 + seal	2.77
275	AADJ000035	357	290	0.88	2 x 1.00 + seal	3.24
280	AADJ000045	362	295	0.88	2 x 1.00 + seal	3.30
300	AADJ000036	382	315	0.88	2 x 1.00 + seal	3.75
315	AADJ000037	397	330	0.88	2 x 1.00 + seal	4.08
350	AADJ000038	432	365	0.88	2 x 1.00 + seal	4.90
400	AADJ000039	482	415	0.88	2 x 1.00 + seal	6.23