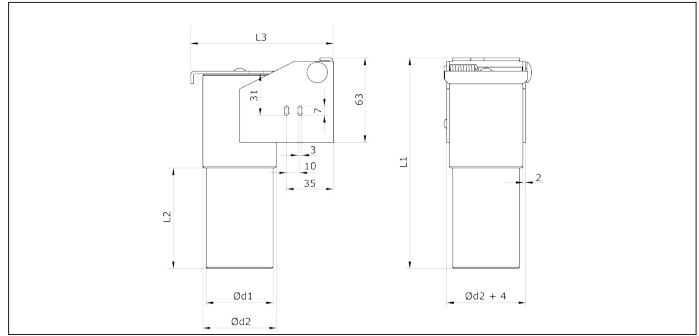


CADC SL Leaf valves



CADC SL Leaf valves

The CADC SL leaf valves can be mounted on the ducting and are designed to connect flexible hoses by means of a flexible hose connector CAEB.

The pipe side of the leaf valve is the same diameter as the pipe and is connected by means of a pipe connector.

A position indicator can be added to the lid support to automatically start the installation when the lid is opened (sold separately).

Material

2 mm electro-galvanized blacksteel (10µm).

Type

With a self-closing spring-mounted lid.

Options

- Position indicator (NCED000038)

Type	Code	d1 Ø mm	d2 Ø mm	L1 mm	L2 mm	L3 mm	Weight kg
38-38	CADC000004	38	43	157	75	94,5	0.70
50-50	CADC000005	50	55	157	75	106,5	0.90
63-63	CADC000006	63	68	157	75	119,5	1.25
76-76	CADC000007	76	81	157	75	132,5	1.46