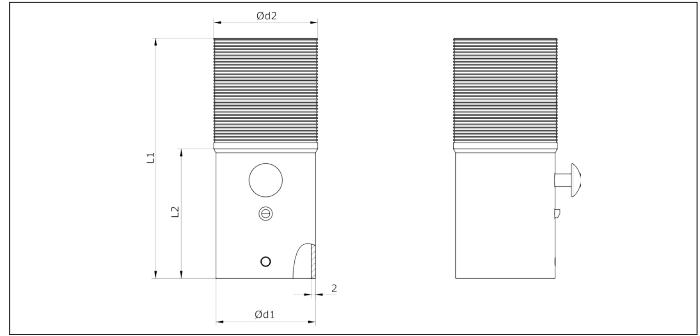
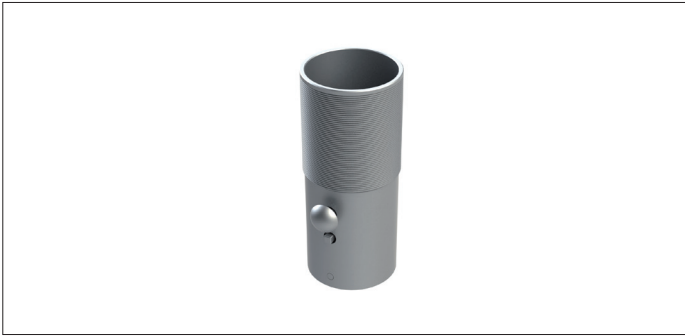


CAEB Hose connectors



CAEB Flexible connectors

For a quick and easy connection of the flexible hose into the leaf valves of an installation.

Can be combined with the CADC SL leaf valves.

A hose ring is recommended to hold the flexible hose in place.

Material

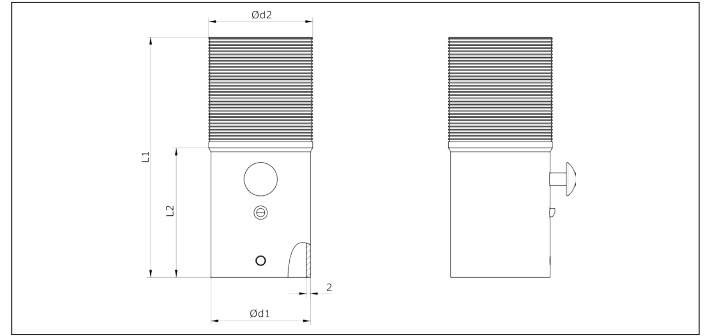
2 mm electro-galvanized blacksteel (10µm).

Type

Equipped with a release button.

Type	Code	d1 Ø mm	d2 Ø mm	L1 mm	L2 mm	Weight kg
38-38	CAEB000011	36	38	115	51	0.18
50-38	CAEB000012	48	38	120	51	0.23
50-45	CAEB000013	48	45	115	51	0.23
50-50	CAEB000014	48	50	115	51	0.23
63-50	CAEB000015	61	50	120	51	0.31
63-63	CAEB000016	61	63	120	51	0.31
76-50	CAEB000017	74	50	140	51	0.44
76-63	CAEB000018	74	63	140	51	0.44
76-76	CAEB000019	74	76	130	51	0.44

CBEB Hose connectors



CBEB Flexible connectors

For a quick and easy connection of the flexible hose into the leaf valves of an installation.

Can be combined with the CBDE SL leaf valves.

A hose ring is recommended to hold the flexible hose in place.

Material

2 mm stainless steel AISI 304.

Type

Equipped with a release button.

Type	Code	d1 Ø mm	d2 Ø mm	L1 mm	L2 mm	Weight kg
38-38	CBEB000005	36	38	115	51	0.18
50-38	CBEB000006	48	38	120	51	0.23
50-45	CBEB000007	48	45	115	51	0.23
50-50	CBEB000008	48	50	115	51	0.23
63-50	CBEB000009	61	50	120	51	0.31
63-63	CBEB000010	61	63	120	51	0.31
76-50	CBEB000011	74	50	140	51	0.44
76-63	CBEB000012	74	63	140	51	0.44
76-76	CBEB000013	74	76	130	51	0.44