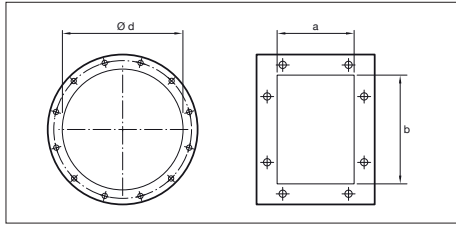
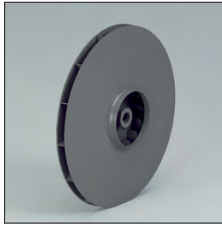
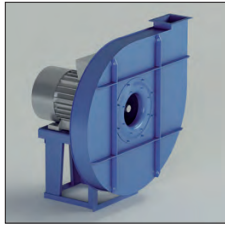


VP-P - VP-P/T



VP-P - VP-P/T
 Direct and indirect driven centrifugal fans.
 Impeller with positive (forward curved) blades.

Application
 For the transport of clean air.

Application area
 Low air volumes, high pressures.

Technical specifications:
 Air volume: 140 up to 7,200 m³/h
 Total pressure: 100 up to 2,000 daPa.

Model	Installed power (kW)	Axle height mm	Poles	Inlet ø d mm	Outlet dimensions a x b mm	Inspection door	Welding fan housing
VP400/P2	0.75	80	2	140	76 x 105	Optional	Optional
VP400/P2	1.1	80	2	140	76 x 105	Optional	Optional
VP450/P2	1.5	90	2	160	85 x 117	Optional	Optional
VP450/P2	2.2	90	2	160	85 x 117	Optional	Optional
VP500/P2R	2.2	90	2	180	95 x 131	Optional	Optional
VP500/P2R	3	100	2	180	95 x 131	Optional	Optional
VP500/P2	3	100	2	180	95 x 131	Optional	Optional
VP500/P2	4	112	2	180	95 x 131	Optional	Optional
VP560/P2R	4	112	2	200	105 x 146	Optional	Optional
VP560/P2R	5.5	132	2	200	105 x 146	Optional	Optional
VP560/P2	5.5	132	2	200	105 x 146	Optional	Optional
VP560/P2	7.5	132	2	200	105 x 146	Optional	Optional
VP630/P2R	5.5	132	2	225	117 x 166	Optional	Optional
VP630/P2R	7.5	132	2	225	117 x 166	Optional	Optional
VP630/P2	7.5	132	2	225	117 x 166	Optional	Optional
VP630/P2	11	160	2	225	117 x 166	Optional	Optional
VP710/P2R	11	160	2	250	131 x 185	Optional	Included
VP710/P2R	15	160	2	250	131 x 185	Optional	Included
VP710/P2	15	160	2	250	131 x 185	Optional	Included
VP710/P2	18.5	160	2	250	131 x 185	Optional	Included
VP710/P2	22	180	2	250	131 x 185	Optional	Included
VP800/P2R	22	180	2	285	148 x 207	Optional	Included
VP800/P2R	30	200	2	285	148 x 207	Optional	Included
VP800/P2	30	200	2	285	148 x 207	Optional	Included
VP800/P2	37	200	2	285	148 x 207	Optional	Included
VP800/P2R	37	200	2	320	166 x 231	Optional	Included
VP900/P2R	45	225	2	320	166 x 231	Optional	Included
VP900/P2R	55	250	2	320	166 x 231	Optional	Included
VP900/P2	55	250	2	320	166 x 231	Optional	Included
VP900/P2	75	280	2	320	166 x 231	Optional	Included

FA10/FM_2014/V2.0.UK

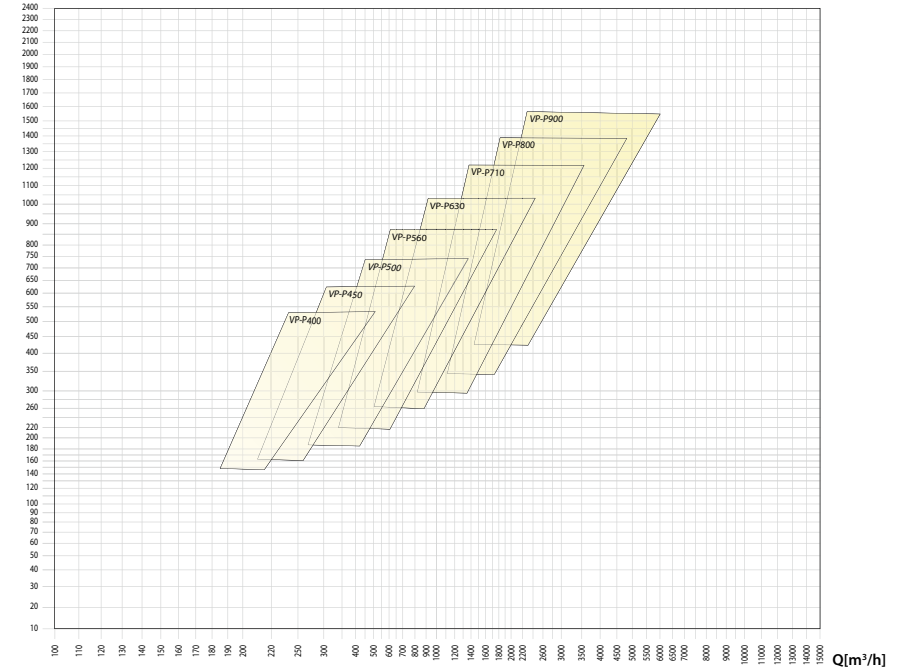
VP-P - VP-P/T

• Size	• Max rpm		
	CLASSE I	CLASSE II	CLASSE III
VP400	5000		
VP450/R	5000		
VP450	5000		
VP500	5000		
VP560/R	5000		
VP560	4700	5000	
VP630/R	4400	4850	
VP630	4100	4550	5000
VP710/R	3700	4100	4500
VP710	3550	3850	4250
VP800/R	3400	3700	4000
VP800	3250	3550	3850
VP900/R	3100	3400	3700
VP900	2950	3250	3550

• Values valid up to 60°C

• between	• and		• degrade speed
	60°C	100°C	
	100°C	150°C	4%
	150°C	200°C	10%
	200°C	250°C	16%
	250°C	300°C	23%
	300°C	350°C	30%
	350°C	400°C	37%
	400°C	450°C	45%
	450°C	500°C	54%
			64%

pt [mmH₂O]



FA10/FM_2014/V2.0.UK

