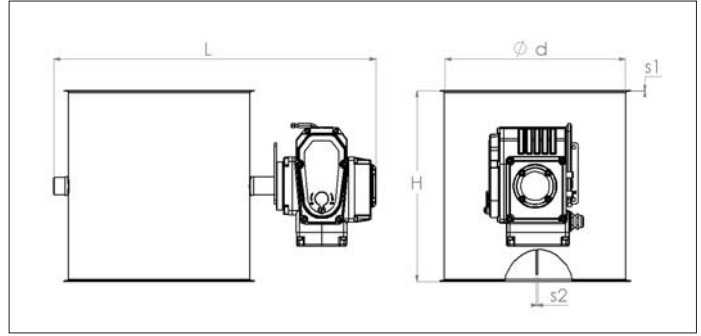


AADL Electric throttle valves with seal



AADL Electric throttle valves with seal

Longitudinally stitch-welded throttle valves with a material thickness of 1 mm with an inner blade with seal in a material thickness of 3 mm for use in overpressure, under-pressure and pressureless systems.

The valves are provided with an electric rotating actuator which opens or closes the blade. The open/close time is 30 seconds.

Axle seals are used and a natural rubber seal is applied to the valve blade for better airtightness.

! Standard voltage : 220 V AC.

Material

Sendzimir galvanized DX51 DZ 275 MAC and EPDM blade seal. Electric actuator type HB50.

Type

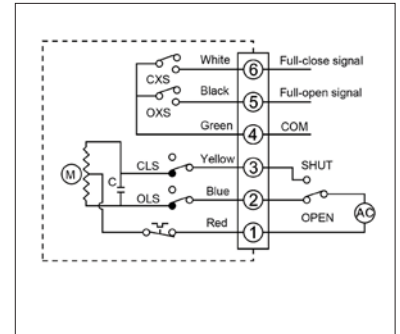
Rolled sheets, stitch-welded, with 6 mm edges for lock rings. Provided with electric actuator, 220 VAC, 50 Nm.

Options

- other diameters
- other sheet thicknesses depending on diameter and length
- other valve seals, for example silicone, NBR, etc.
- other types of electric actuator (ATEX)
- other types of edges or connections



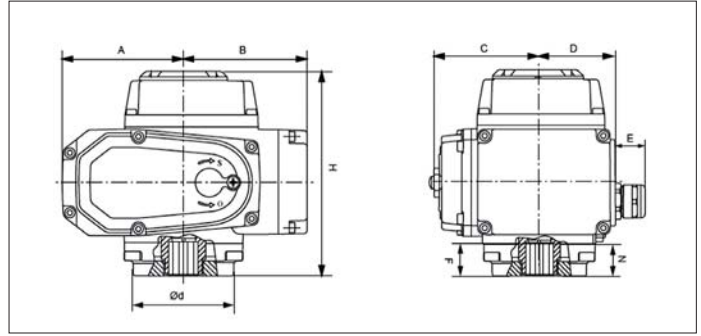
Provided with hexagonal handle for manual operation



Wiring diagram of 220V AC actuator

Ø	Code			L mm	H mm	s1 mm	s2 mm	Open/close sec.	Weight kg
	220V AC	24V AC	24V DC						
80	AADL000168	AADL000214	AADL000151	295	95	0.88	2 x 1.00 + seal	30	3,28
100	AADL000169	AADL000215	AADL000152	315	115	0.88	2 x 1.00 + seal	30	3,38
120	AADL000170	AADL000216	AADL000153	335	135	0.88	2 x 1.00 + seal	30	3,53
125	AADL000171	AADL000217	AADL000154	340	140	0.88	2 x 1.00 + seal	30	3,56
140	AADL000172	AADL000218	AADL000155	355	155	0.88	2 x 1.00 + seal	30	3,76
150	AADL000173	AADL000219	AADL000156	365	165	0.88	2 x 1.00 + seal	30	3,84
160	AADL000174	AADL000220	AADL000157	375	175	0.88	2 x 1.00 + seal	30	3,92
180	AADL000175	AADL000221	AADL000158	395	195	0.88	2 x 1.00 + seal	30	4,24
200	AADL000176	AADL000222	AADL000159	415	215	0.88	2 x 1.00 + seal	30	4,44
225	AADL000177	AADL000223	AADL000160	440	240	0.88	2 x 1.00 + seal	30	4,84
250	AADL000178	AADL000224	AADL000161	465	265	0.88	2 x 1.00 + seal	30	5,27
275	AADL000179	AADL000225	AADL000162	490	290	0.88	2 x 1.00 + seal	30	5,74
280	AADL000180	AADL000226	AADL000163	495	295	0.88	2 x 1.00 + seal	30	5,80
300	AADL000181	AADL000227	AADL000164	515	315	0.88	2 x 1.00 + seal	30	6,25
315	AADL000182	AADL000228	AADL000165	530	330	0.88	2 x 1.00 + seal	30	6,58
350	AADL000183	AADL000229	AADL000166	565	365	0.88	2 x 1.00 + seal	30	7,40
400	AADL000184	AADL000230	AADL000167	615	415	0.88	2 x 1.00 + seal	30	8,73

PCL Electric actuator H-50 for AADL electric throttle valves



PCL Electric actuator H-50 for AADL electric throttle valves

The H-50 actuators are especially suitable for the operation of ball valves and throttle valves with 90°-rotation angle.

Water resistant body with overload protection and a heating resistance against condensation with its self-locking secondary reducing gear to have an exact positioning.

Delivered with vertical upward optical position indicator and 2 (OPEN/CLOSE) torque switches. All other executions only on request. All models of the H series come standard with a manual operation hand lever.

Prominently labeled and color coded viewing window – yellow for open, red for closed – indicates valve position through the full range of travel. Made of high impact, heat and chemical resistant clear polycarbonate.

The actuator switches are pre-wired to an easily accessible terminal block.

Material

Carbon steel, aluminum alloy, bronze body polyester coated, 2 limit switches.

Type

- Torque : 50 Nm.
- Voltage : 220V AC.
- Power : 10 W.
- Rated current : 0.24 A.
- Running time : 30 seconds
- Working temperature : -20°C to +70°C.
- Mounting pad : DIN-ISO 5211, M5-M6-M8 (F03, F05 & F07).
- Protection class : IP67.
- Operating angle : 90° ±5°.
- UL, CSA and CE certification of most units.

Options

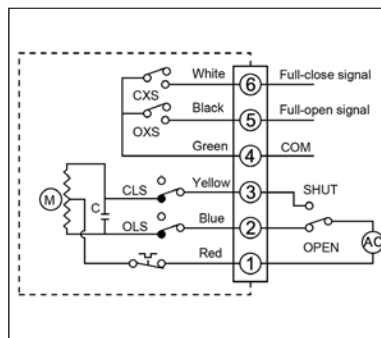
- other torques : 100, 200, 400 and 600, 1000, 2000 Nm
- other voltages : 24V DC/AC, 110V AC, 380V AC & 220V AC modulante
- ATEX versions

! Standard available in 220 V AC.

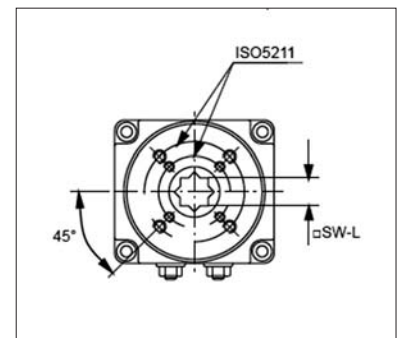
! The screw is only to adjust the mechanical limit switch, removal is not permitted.



Provided with hexagonal handle for manual operation



Wiring diagram of 220V AC actuator



Actuator support dimensions

H-50 code	Voltage	A mm	B mm	C mm	D mm	E mm	F mm	H mm	N mm	Ød mm	SW	Open/close sec.	Weight kg
PCL000001	220V AC	82	83	70	50.5	20	23	137.5	22	68	9-11-14	30	2.50
PCL000002	24V DC	82	83	70	50.5	20	23	137.5	22	68	9-11-14	30	2.50
PCL000005	24V AC	82	83	70	50.5	20	23	137.5	22	68	9-11-14	30	2.50