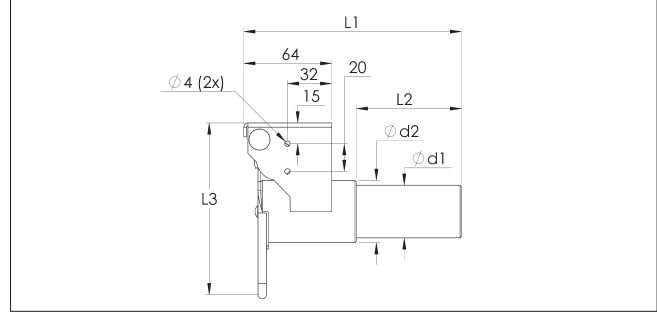


CADC SL2 Leaf valves



CADC SL2 Leaf valves

The CADC SL2 leaf valves can be mounted on the ducting and are designed to connect flexible hoses by means of a flexible hose connector CAEB RL and SL2.

The pipe side of the leaf valve is the same diameter as the pipe and is connected by means of a pipe connector.

A position indicator can be added to the lid support to automatically start the installation when the lid is opened (sold separately).

Material

2 mm electro-galvanized blacksteel (10µm).

Type

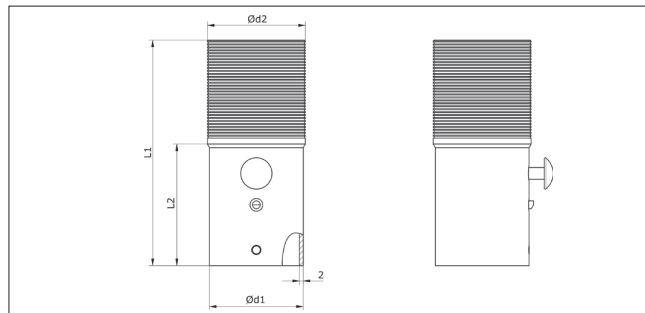
With a self-closing spring-mounted lid.

Options

- Position indicator (NCED000038)

Type	Code	d1 Ø mm	d2 Ø mm	L1 mm	L2 mm	L3 mm	Weight kg
38-38	CADC000008	38	45	157	76	125	0.70
50-50	CADC000009	50	55	157	76	135	0.90
63-63	CADC000010	63	74	157	76	153	1.25
76-76	CADC000011	76	83	157	76	163	1.46

CAEB SL2 Hose connectors



CAEB SL2 Flexible connectors

For a quick and easy connection of the flexible hose into the leaf valves of an installation.

Can be combined with the CADC RL and SL2 leaf valves.

A hose ring is recommended to hold the flexible hose in place.

Material

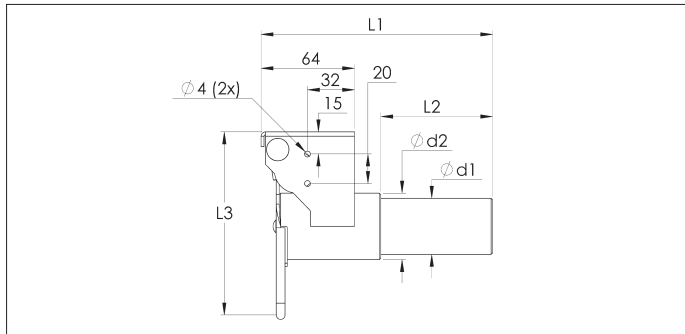
2 mm electro-galvanized blacksteel (10µm).

Type

Equipped with a release button.

Type	Code	d1 Ø mm	d2 Ø mm	L1 mm	L2 mm	Weight kg
38-38	CAEB000002	37.5	38	145	80	0.18
50-38	CAEB000003	47.5	38	145	80	0.23
50-45	CAEB000004	47.5	45	145	80	0.23
50-50	CAEB000005	47.5	50	145	80	0.23
63-50	CAEB000006	66.5	50	145	80	0.31
63-63	CAEB000007	66.5	63	145	80	0.31
76-50	CAEB000008	75.5	50	145	80	0.44
76-63	CAEB000009	75.5	63	145	80	0.44
76-76	CAEB000010	75.5	76	145	80	0.44

CBDE SL2 Leaf valves



CBDE SL Leaf valves

The CBDE SL2 leaf valves can be mounted on the ducting and are designed to connect flexible hoses by means of a flexible hose connector CBEB RL and SL2.

The pipe side of the leaf valve is the same diameter as the pipe and is connected by means of a pipe connector.

A position indicator can be added to the lid support to automatically start the installation when the lid is opened (sold separately).

Material

2 mm stainless steel AISI 304.

Type

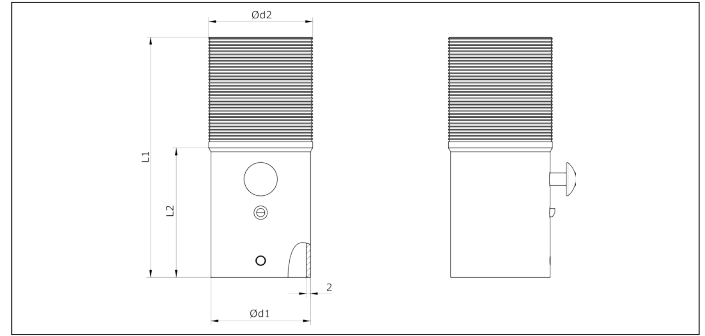
With a self-closing spring-mounted lid.

Options

- Position indicator (NCED000038)

Type	Code	d1 Ø mm	d2 Ø mm	L1 mm	L2 mm	L3 mm	Weight kg
38-38	CBDE000005	38	45	157	76	125	0.70
50-50	CBDE000006	50	55	157	76	135	0.90
63-63	CBDE000007	63	74	157	76	153	1.25
76-76	CBDE000008	76	83	157	76	163	1.46

CBEB SL2 Hose connectors



CBEB SL2 Flexible connectors

For a quick and easy connection of the flexible hose into the leaf valves of an installation.

Can be combined with the CBDE RL and SL2 leaf valves.

A hose ring is recommended to hold the flexible hose in place.

Material

2 mm stainless steel AISI 304.

Type

Equipped with a release button.

Type	Code	d1 Ø mm	d2 Ø mm	L1 mm	L2 mm	Weight kg
38-38	CBEB000014	37.5	38	145	80	0.18
50-38	CBEB000001	47.5	38	145	80	0.23
50-45	CBEB000016	47.5	45	145	80	0.23
50-50	CBEB000002	47.5	50	145	80	0.23
63-50	CBEB000003	66.5	50	145	80	0.31
63-63	CBEB000004	66.5	63	145	80	0.31
76-50	CBEB000020	75.5	50	145	80	0.44
76-63	CBEB000021	75.5	63	145	80	0.44
76-76	CBEB000022	75.5	76	145	80	0.44