

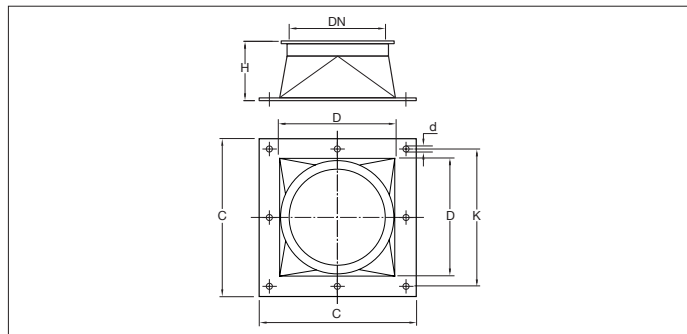
BAEB Transition pieces



BAEB Transition pieces

Full welded transition pieces designed for the transition between different ducting elements or machinery.

These transition pieces are suitable for the transport of waste materials such as dust and chips but also for the transport of grains and such.



Material

2.00 mm black steel 1.0330 powder coated in RAL 7032.
Electrostatically conductive and food-safe powder coating thickness of 30 to 60 µm.
Temperature resistance up to +80°C.

Type

Rolled and folded sheets with 6 mm edge for lock rings and flange.

Options

- FDA and EU compliant food-grade quality
- hot-dipped galvanized or stainless steel execution
- wear resistant lining as of Ø150 (83° Shore)
- equipotential equalization
- other colors
- other diameters or dimensions
- other sheet thicknesses, depending on length and diameter
- other types of edges or connections

Ø d mm	Code	C mm	D mm	K mm	H mm	d mm	s mm	Weight kg
100	BAEB000009	160	120	140	60	6	2.00	0.45
120	BAEB000010	180	140	164	70	6	2.00	0.73
150	BAEB000011	220	180	202	85	6	2.00	1.08
175	BAEB000012	245	200	225	145	6	2.00	1.93
200	BAEB000013	290	250	270	135	6	2.00	2.15
250	BAEB000014	345	300	325	150	6	2.00	2.91
300	BAEB000015	395	350	375	210	6	2.00	4.54