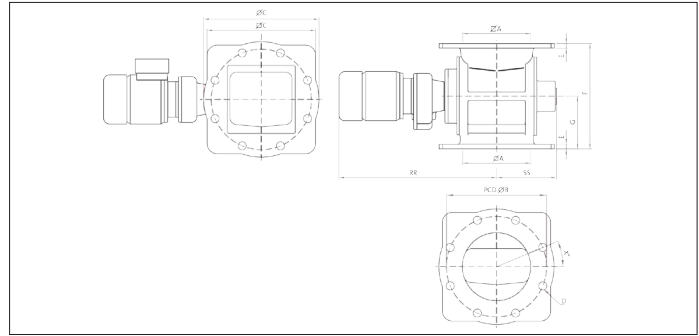
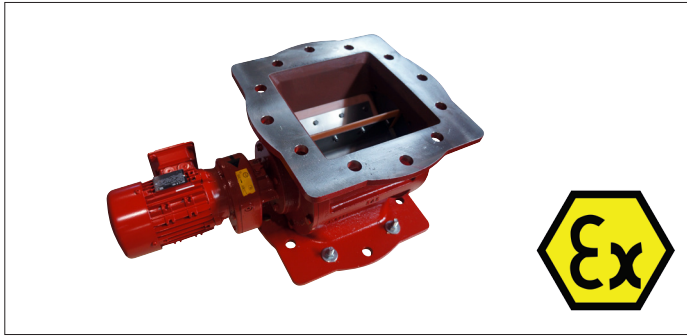


RVD ATEX Rotary valves



RVD ATEX rotary valves

The RVD rotary valves is developed for applications under a filter. The universal flanges on the top and underside of the valve are drilled according to PN flange standards.

The top opening of the rotary valve is square allowing a good slope so that the product easily slides into the compartments of the rotor to be eliminated and thus reducing the risk of clogging. It is easily mounted on a round or square filter hopper outlet. On the other hand, the underside outlet of the valve is round to minimize air leakage. The underside flange can easily be fitted on a round or square flange of the connecting pipe.

The standard execution is designed to handle products with a max. temperature of 70 °C and a maximum pressure difference of 0,5 bar. the rotary valves are resistant to a explosion pressure surge in executions according to ATEX 2014/34/CE norm up to Group II Category 1D/-, or in flameproof execution category St.2.

These rotary valves also follow the following harmonized standards :

- EN 15089:2009
- EN 13463-1:2009
- EN 13463-5:2011

Material

GG25 cast-iron body powder coated RAL 3002
St37.2 steel rotor
90° shore polyurethane blades
Temperature resistance : +80°C

Type

With PN flange connection
8 chamber rotor with 3 mm blades
With NORD electrical drive (IP 55, class F)
Temperature range -30°C up to +70°C

Options

- 6 chamber execution
- Galvanized
- Stainless steel (AISI 304L or 316L)
- Other motor powers
- Other RAL colors
- Other blades
- ATEX 1D/2GD version
- Rotation detectors

Advantages

- Minimal air leakage
- Choice of blades
- PN flange compatible

Model	capacity ¹⁾ (L/rev)	Discharge volume ²⁾ (m ³ /h)	Rotation (rpm)	Power (kW)	Max. pressure (Bar)	Max temp. (°C)	Weight (kg)
RVD1-X3-08	6	4.9	27	0.37	0.5	70	65
RVD2-X3-08	8.5	6.9	27	0.37	0.5	70	75
RVD3-X3-08	19	15.4	27	0.55	0.5	70	120

¹⁾ Volume output at 100% degree of filling

²⁾ Volume output at 50% degree of filling

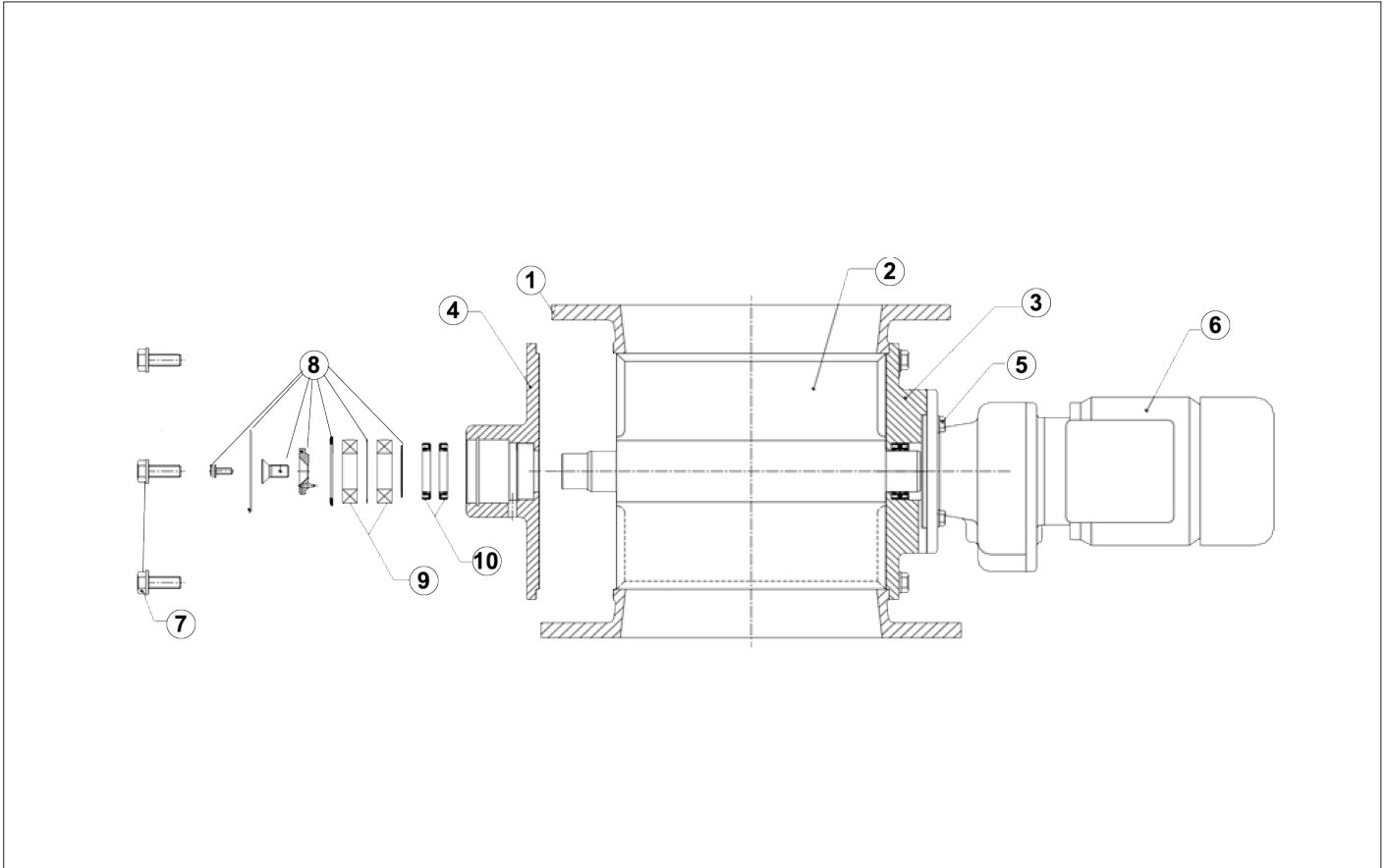
Dimensions :

Model	ØA (mm)	A (mm)	ØB (mm)	ØC (mm)	C (mm)	D (mm)	X° (mm)	E (mm)	F (mm)	G (mm)	RR (mm)	SS (mm)
RVD1-X3-08	200	200	295	340	320	8x Ø23	22.5	14	310	155	465	176
RVD2-X3-08	250	250	350	406	370	12x Ø23	30	15	325	162.5	485	196
RVD3-X3-08	300	300	400	483	445	12x Ø23	30	21	420	210	556	230

RVD ATEX Rotary valves

Components list for rotary valve type RVD

Please only use original components to guarantee a worry free functioning of the rotary valves.



#	Part	Description
1	Body	GG25 cast-iron, powder coated RAL 3002
2	Rotor	St37.2 steel with 3 mm polyurethane blades
3	Cover	GG25 cast-iron, powder coated RAL 3002
4	Cover	GG25 cast-iron, powder coated RAL 3002
5	Bolts	steel
6	Geared motor	4P - 50/60 Hz - IP55
7	Bolts	steel
8	bearing cover and retaining rings	steel bearings and discs
9	Ball bearings	steel
10	Lip seals	steel

Position detector for rotary valve type RVD



Type	Housing	Output function	Output	System	Connection	Mounting	Sensing range
M18 Housing detector	M18 x 50	NO (Normally Open)	DC NPN	Proximity Sensor	Cable	Flush	From 4 to 6 mm