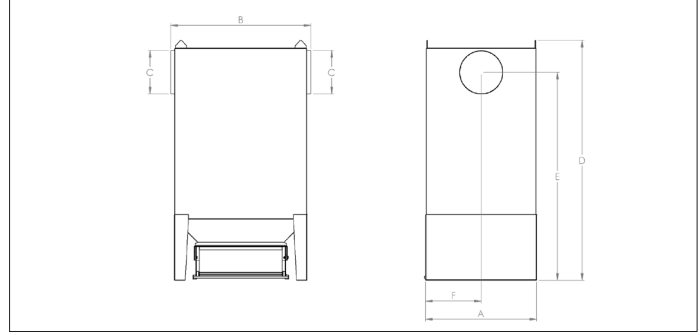
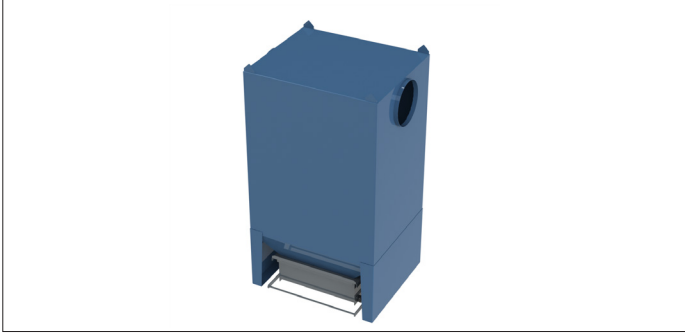


SFUV - spark separator



SFUV - Spark separator

Used as pre-separator before process air filtration that can contain sparks, which may be the case, when there is a relative short distance from the spark source, e.g. grinding, plasma or flame cutting, to the filter unit. In the pre-separator with spark arrest type SFUV possible sparks are extinguished by a labyrinth with water. It is placed on an even surface before the filter unit and connected to piping on inlet and outlet. It is filled with water before commissioning.

The water level can regularly be checked through water level indicator on container front but the SFUV is also available with automatic water filling. Container on wheels suspended in Quicklock system ensures user-friendly operation.

Air volumes : from 750 to 9.900 m³/h
Max pressure : up to 5.000 Pa

Material

St 37.2 - 2 mm black steel plate Surface powder enamelled RAL 5007/7011 structure
Temperature resistance : +80°C

Type

2 mm plates welded together

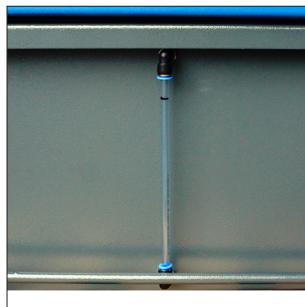
Options

- Other RAL colors
- Automatic water filling



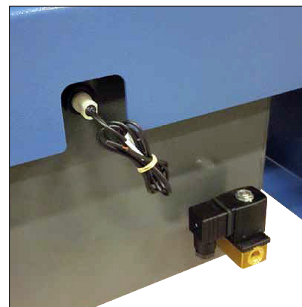
Water bath

Water bath is easily removed and subsequently serviced.



Display

Water level indicator can be read during operation.



Automatic water filling

This is an option.



Inlet

Placed in the top left side, after which the air is turned down.

SFUV - spark separator

Dimensions SFUV unit:

Model	Min. air volume (m³/h)	Max. air volume (m³/h)	Delta P (Pa)	A (mm)	B (mm)	C (Ømm)	D (mm)	E (mm)	F (mm)
SFUV 160	750	1500	500-1000	506	564	160	1154	994	253
SFUV 200	1150	2300	500-1000	604	700	200	1332	1154	302
SFUV 250	1750	3500	500-1000	700	882	250	1557	1356	315
SFUV 315	2650	5300	500-1000	807	1020	315	1738	1511	403
SFUV 400	4500	9900	500-1000	1100	1260	400	2128	1852	550

Working principle of flow through SFUV unit:

