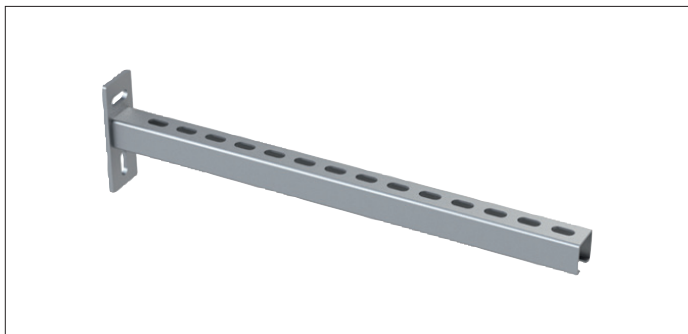


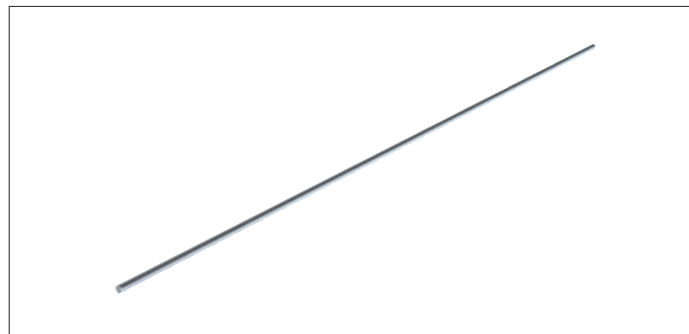
## Mounting accessories



### Suspension rails GAZC

Suspension elements, made of galvanized steel.

Length mm	Code	Weight
300	GAZC000001	0.50
450	GAZC000002	0.80
600	GAZC000003	1.10
750	GAZC000004	1.70
800	GAZC000005	1.90
1000	GAZC000006	2.30

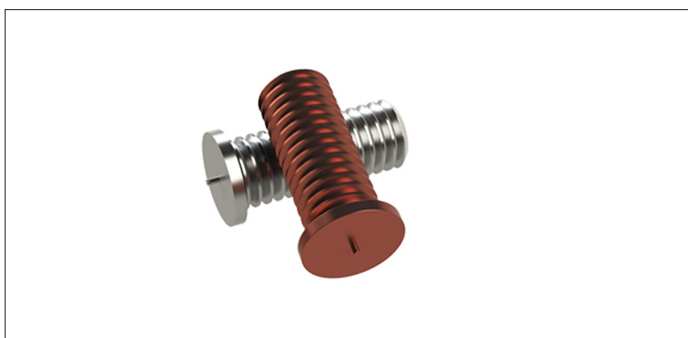


### Threaded rods GAZF

Suspension elements, available in M8 or M10, made of galvanized steel.

Standard length : 1000 mm

Code	Size	Weight
GAZF000001	M8	0.30
GAZF000002	M10	0.40



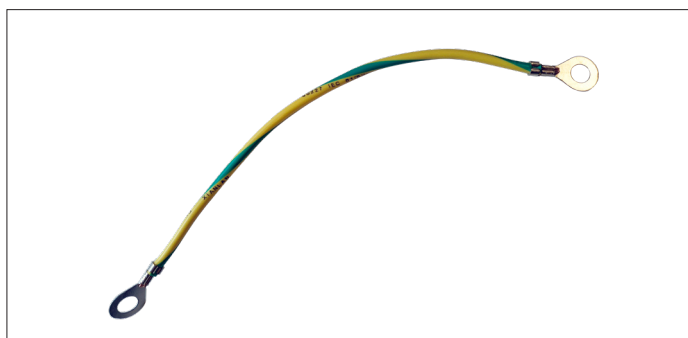
### Earthing bolts

Placed on the light gauge ducting components to attach the earthing strap from one component to another.

#### Material

Brass for galvanized ducting or in Stainless steel for Stainless steel ducting. Including nut and plastic protection cap.

Model	Code	Size
Brass	GAZH000001	M6 x 15
AISI 304	GBZH000001	M6 x 15



### Earthing strap GZZJ

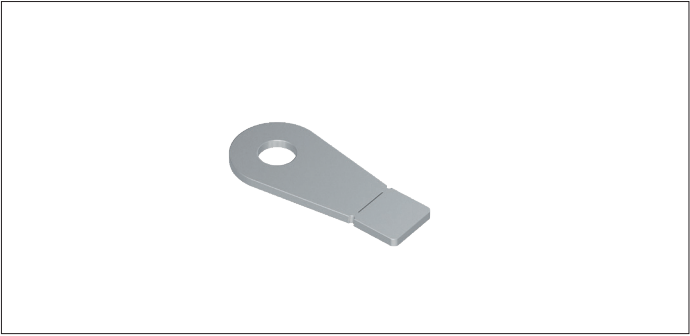
Used for the earthing of two elements, it ensures the conductivity within an installation. It can be affixed on a pipe with self-drilling screws or with earthing lugs.

#### Material

M6 PVC coated Ø3mm copper cable (green/yellow).

Length mm	Code	Weight
200	GZZJ000001	0.01

Mounting accessories



**Earthing bolts GBZH**

Placed on the heavy gauge ducting components to attach the earthing strap from one component to another. Delivered with a protective cap.

**Material**

Stainless steel AISI 304

**Earthing lugs GBZG**

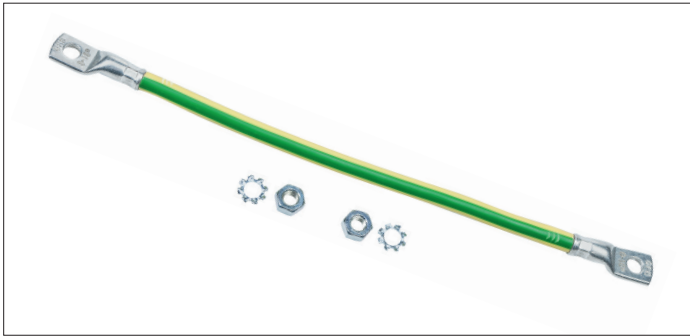
Placed on the heavy gauge ducting components to attach the earthing strap from one component to another. 10 pieces in a plastic bag.

**Material**

Stainless steel AISI 304

Model	Code	Size
AISI 304	GBZH000002	M6 x 15

Model	Code	Size
AISI 304	GBZG000001	M6



**Earthing strap GZZJ**

Used for the earthing of two elements, it ensures the conductivity within an installation. It can be affixed on a pipe with self-drilling screws or with earthing lugs.

**Material**

M6 PVC coated Ø7mm copper cable (green/yellow). 10 pieces in a plastic bag, including 2x serrated lock washers and nuts per cable.

Code	Length mm	Weight kg
GZZJ000006	120	0.10
GZZJ000007	230	0.20
GZZJ000008	330	0.30
GZZJ000009	430	0.40