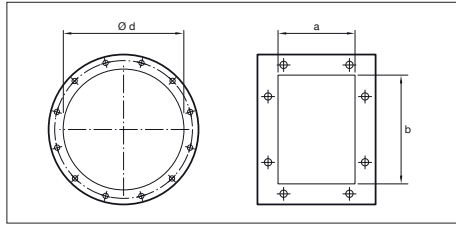
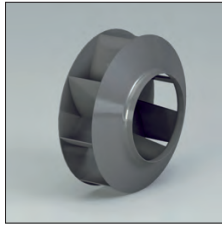
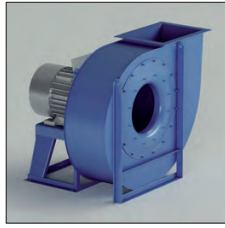


RM - RM/T



RM - RM/T

Direct and indirect driven centrifugal fans. Impeller with negative (backwards curved) blades.

Application

For the transport of potentially very dusty air, sawdust, various chips, granular material, with the exclusion of filaments.

Application area

Low-medium-high air volumes, low-medium pressures.

Technical specifications:

Air volume: 360 up to 180.000 m³/h
 Total pressure: 50 up to 560 daPa.

Model	Installed power (kW)	Axle height mm	Poles	Inlet ø d mm	Outlet dimensions a x b mm	Inspection door	Welding fan housing
RM220/2	0.18	63	2	125	103 x 124	Optional	Optional
RM250/2R	0.25	63	2	180	148 x 207	Optional	Optional
RM250/2	0.37	71	2	180	148 x 207	Optional	Optional
RM280/2R	0.55	71	2	200	166 x 231	Optional	Optional
RM280/2	0.75	80	2	200	166 x 231	Optional	Optional
RM310/2R	1.1	80	2	225	185 x 258	Optional	Optional
RM310/2	1.5	90	2	225	185 x 258	Optional	Optional
RM350/2R	1.5	90	2	250	205 x 288	Optional	Optional
RM350/2	2.2	90	2	250	205 x 288	Optional	Optional
RM400/2R	3	100	2	275	229 x 322	Optional	Optional
RM400/2	4	112	2	275	229 x 322	Optional	Optional
RM450/2R	5.5	132	2	325	256 x 361	Optional	Optional
RM450/2	7.5	132	2	325	256 x 361	Optional	Optional
RM500/2R	11	160	2	350	288 x 404	Optional	Optional
RM500/2	15	160	2	350	288 x 404	Optional	Optional
RM560/2R	18.5	160	2	400	322 x 453	Optional	Optional
RM560/2	22	180	2	400	322 x 453	Optional	Optional
RM500/4R	1.1	90	4	350	288 x 404	Optional	Optional
RM500/4	1.5	90	4	350	288 x 404	Optional	Optional
RM560/4R	2.2	100	4	400	322 x 453	Optional	Optional
RM560/4	3	100	4	400	322 x 453	Optional	Optional
RM630/4R	4	112	4	450	361 x 507	Optional	Optional
RM630/4	5.5	132	4	450	361 x 507	Optional	Optional
RM710/4R	7.5	132	4	500	404 x 569	Included	Included
RM710/4	11	160	4	500	404 x 569	Included	Included
RM800/4R	15	160	4	550	453 x 638	Included	Included
RM800/4	18.5	180	4	550	453 x 638	Included	Included
RM900/4R	30	200	4	630	507 x 715	Included	Included
RM900/4	37	225	4	630	507 x 715	Included	Included
RM1000/4R	45	225	4	710	569 x 801	Included	Included
RM1000/4	55	250	4	710	569 x 801	Included	Included
RM1120/4R	75	280	4	800	638 x 898	Included	Included
RM1120/4	90	280	4	800	638 x 898	Included	Included
RM800/6R	4	132	6	550	453 x 638	Included	Included
RM800/6	5.5	132	6	550	453 x 638	Included	Included
RM900/6R	7.5	160	6	630	507 x 715	Included	Included
RM900/6	11	160	6	630	507 x 715	Included	Included
RM1000/6R	15	180	6	710	569 x 801	Included	Included
RM1000/6	18.5	200	6	710	569 x 801	Included	Included
RM1120/6R	22	200	6	800	638 x 898	Included	Included
RM1120/6	30	225	6	800	638 x 898	Included	Included
RM1250/6R	37	250	6	900	715 x 1007	Included	Included
RM1250/6	45	280	6	900	715 x 1007	Included	Included
RM1400/6R	55	280	6	1000	801 x 1130	Included	Included
RM1400/6	75	315	6	1000	801 x 1130	Included	Included

RM - RM/T

• Size	• Max rpm			
	CLASSE I	CLASSE II	CLASSE III	CLASSE IV
RM220	5200	6300		
RM250	5200	6300		
RM280	5000	5600		
RM310/R	4800	5200		
RM310	4550	5000		
RM350/R	4350	4700		
RM350R	4150	4500		
RM400/R	3950	4250		
RM400	3750	4000		
RM450/R	3550	3800		
RM450	3350	3600		
RM500/R	3250	3500		
RM500	3150	3400		
RM560/R	3050	3250	3550	
RM560	2950	3150	3300	
RM630/R	2600	2950	3200	
RM630	2400	2800	3050	

• Size	• Max rpm			
	CLASSE I	CLASSE II	CLASSE III	CLASSE IV
RM710/R	2250	2700	2950	
RM710	2100	2500	2750	
RM800/R	2000	2400	2600	
RM800	1900	2200	2400	
RM900/R	1750	2100	2300	
RM900	1650	2000	2200	
RM1000/R	1550	1850	2050	
RM1000	1450	1700	1900	
RM1120/R	1350	1600	1750	
RM1120	1250	1500	1650	
RM1250/R	1150	1350	1550	
RM1250	1050	1250	1450	
RM1400/R	1000	1200	1350	
RM1400	950	1150	1300	
RM1600	900	1050	1200	
RM1800	950	1050	1150	
RM2000	850	950	1050	

• Values valid up to 60°C

• between	• and	• degrade speed	
		60°C	100°C
100°C	150°C	10%	
150°C	200°C	16%	
200°C	250°C	23%	
250°C	300°C	30%	
300°C	350°C	37%	
350°C	400°C	45%	
400°C	450°C	54%	
450°C	500°C	64%	

