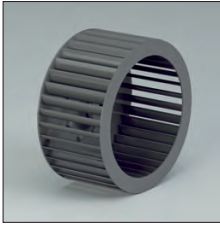
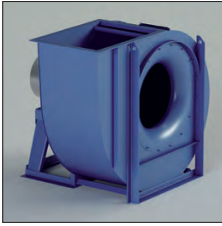


CA - CA/T



**CA - CA/T**

Direct and indirect driven centrifugal fans. Impeller with radial blades.

**Application**

For the transport of clean air and fumes.

**Application area**

Medium-high air volumes, low pressures.

**Technical specifications:**

Air volume: 700 up to 80.000 m<sup>3</sup>/h  
Total pressure: 25 up to 285 daPa.

Model	Installed power (kW)	Axle height (mm)	Poles	Inlet ø d (mm)	Outlet dimensions a x b (mm)	Inspection door	Welding fan housing
CA180/2	0.55	71	2	180	130 x 185	Optional	Optional
CA180/2	1.1	80	2	180	130 x 185	Optional	Optional
CA200/2	1.1	80	2	200	148 x 207	Optional	Optional
CA200/2	2.2	90	2	200	148 x 207	Optional	Optional
CA220/2	1.5	90	2	225	166 x 231	Optional	Optional
CA220/2	3	100	2	225	166 x 231	Optional	Optional
CA250/2	3	100	2	250	185 x 258	Optional	Optional
CA250/2	4	112	2	250	185 x 258	Optional	Optional
CA280/2	5.5	132	2	275	205 x 288	Optional	Optional
CA280/2	7.5	132	2	275	205 x 288	Optional	Optional
CA220/4	0.18	63	4	225	166 x 231	Optional	Optional
CA220/4	0.37	71	4	225	166 x 231	Optional	Optional
CA250/4	0.37	71	4	250	185 x 258	Optional	Optional
CA250/4	0.55	80	4	250	185 x 258	Optional	Optional
CA280/4	0.75	80	4	275	205 x 288	Optional	Optional
CA280/4	1.1	90	4	275	205 x 288	Optional	Optional
CA310/4	1.5	90	4	325	229 x 322	Optional	Optional
CA310/4	2.2	100	4	325	229 x 322	Optional	Optional
CA350/4	2.2	100	4	350	256 x 361	Optional	Optional
CA350/4	3	100	4	350	256 x 361	Optional	Optional
CA350/4	4	112	4	350	256 x 361	Optional	Optional
CA400/4	5.5	132	4	400	288 x 404	Optional	Optional
CA400/4	7.5	132	4	400	288 x 404	Optional	Optional
CA450/4	7.5	132	4	450	322 x 453	Optional	Optional
CA450/4	15	160	4	450	322 x 453	Optional	Optional
CA500/4	15	160	4	500	361 x 507	Optional	Optional
CA500/4	22	180	4	500	361 x 507	Optional	Optional
CA560/4	22	180	4	550	404 x 569	Optional	Optional
CA560/4	37	225	4	550	404 x 569	Optional	Optional
CA310/6	0.37	80	6	325	229 x 322	Optional	Optional
CA310/6	0.55	80	6	325	229 x 322	Optional	Optional
CA350/6	0.75	90	6	350	256 x 361	Optional	Optional
CA350/6	1.1	90	6	350	256 x 361	Optional	Optional
CA400/6	1.5	100	6	400	288 x 404	Optional	Optional
CA400/6	2.2	112	6	400	288 x 404	Optional	Optional
CA450/6	3	132	6	450	322 x 453	Optional	Optional
CA500/6	4	132	6	500	361 x 507	Optional	Optional
CA500/6	5.5	132	6	500	361 x 507	Optional	Optional
CA560/6	7.5	160	6	550	404 x 569	Optional	Optional
CA560/6	11	160	6	550	404 x 569	Optional	Optional
CA630/6	11	160	6	630	453 x 638	Optional	Included
CA630/6	18.5	200	6	630	453 x 638	Optional	Included
CA710/6	22	200	6	710	507 x 715	Included	Included
CA710/6	37	250	6	710	507 x 715	Included	Included
CA800/6	37	250	6	800	569 x 801	Included	Included
CA800/6	55	280	6	800	569 x 801	Included	Included
CA900/8	45	280	8	900	638 x 898	Included	Included
CA900/8	55	315	8	900	638 x 898	Included	Included
CA1000/8	55	315	8	1000	715 x 1007	Included	Included
CA1000/8	75	315	8	1000	715 x 1007	Included	Included

CA - CA/T

Size	Max rpm		
	CLASSE I	CLASSE II	CLASSE III
CA180	3700*	4200	
CA200	3300*	3800	4250
CA220	3000*	3450	3800
CA250	2650*	3000	3550
CA280	2350*	2700	3100
CA310	2100*	2450	2750
CA350	2150	2400	2650
CA400	1900	2150	2350
CA450	1650	1900	2100
CA500		1700	1900
CA560		1500	1650
CA630		1300	1450
CA670		1250	1400
CA710		1200	1300
CA800		1000	1150
CA900		900	1050
CA1000		900	1000

\* Seamed blades

\* Values valid up to 60°C

+ between	60°C	+ and	100°C	+ degrade speed	4%
	100°C		150°C		10%
	150°C		200°C		16%
	200°C		250°C		23%
	250°C		300°C		30%
	300°C		350°C		37%
	350°C		400°C		45%
	400°C		450°C		54%
450°C	500°C	64%			

