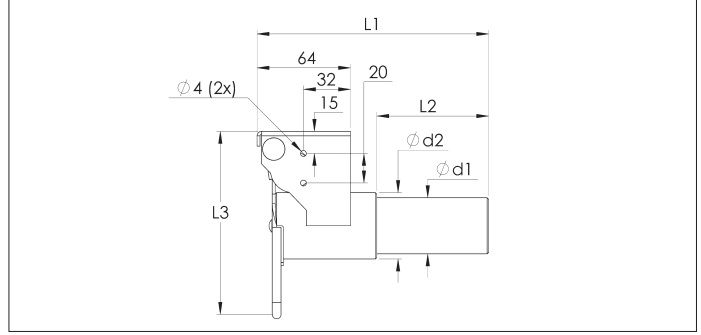


CADC SL2 Leaf valves



**CADC SL2 Leaf valves**

The CADC SL2 leaf valves can be mounted on the ducting and are designed to connect flexible hoses by means of a flexible hose connector CAEB RL and SL2.

The pipe side of the leaf valve is the same diameter as the pipe and is connected by means of a pipe connector.

A position indicator can be added to the lid support to automatically start the installation when the lid is opened (sold separately).

**Material**

2 mm electro-galvanized blacksteel (10 $\mu$ m).

**Type**

With a self-closing spring-mounted lid.

**Options**

- Position indicator (NCED000038)

Type	Code	d1 Ø mm	d2 Ø mm	L1 mm	L2 mm	L3 mm	Weight kg
38-38	CADC000008	38	45	157	76	125	0.70
50-50	CADC000009	50	55	157	76	135	0.90
63-63	CADC000010	63	74	157	76	153	1.25
76-76	CADC000011	76	83	157	76	163	1.46