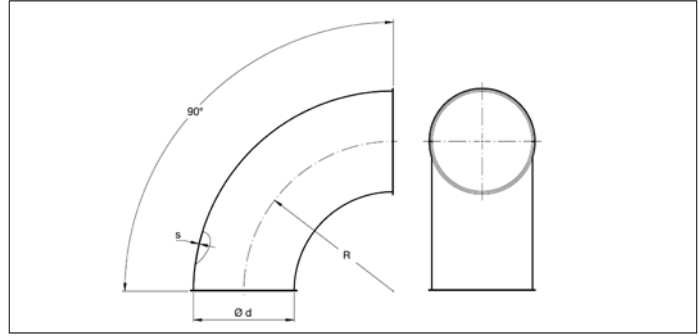


**AABA Pressed bends 90° R=1.5D**



**Pressed bends 90° R=1.5D**

The pressed bends are made of two preformed halves which are longitudinally spot-welded together for use in under-pressure and pressureless systems.

These bends are suitable for the transport of waste materials such as dust and chips but also for the transport of grains and such.

They are only produced in R=1.5D. If a situation requires other radiuses or diameters, please see the segmented bends in this section.

**Material**

Sendzimir galvanized DX51 DZ 275 MAC.

**Type**

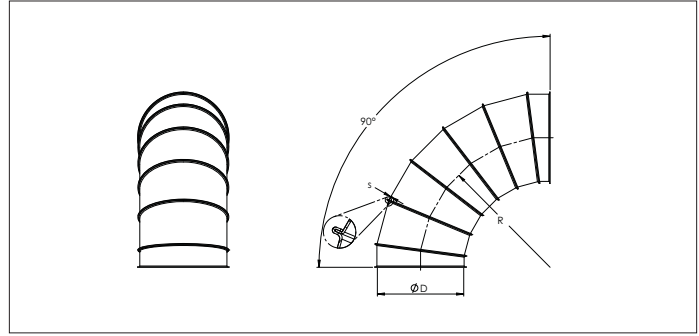
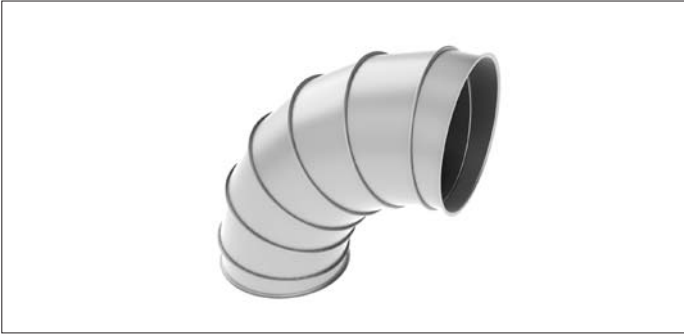
Pressed sheets spot-welded together with 6 mm edges for lock rings.

**Options**

- other types of edges or connections

Ø d mm	Code	R mm	s mm	Weight kg
80	AABA000001	120	1.20	0.45
100	AABA000002	150	1.20	0.75
120	AABA000003	180	1.20	1.00
125	AABA000141	187.5	1.20	1.10
140	AABA000004	210	1.20	1.45
150	AABA000005	225	1.20	1.55
160	AABA000006	240	1.20	1.85
180	AABA000007	270	1.20	2.25
200	AABA000008	300	1.20	2.75
225	AABA000009	337.5	1.20	3.50
250	AABA000010	375	1.20	4.40
275	AABA000011	412.5	1.20	5.35
300	AABA000012	450	1.20	6.30

**AABA Segmented bends 90° R=1.5D**



**Segmented bends 90° R=1.5D**

The segmented bends are composed of stitch-welded segments that are lock-formed together for use in under-pressure and pressureless systems.

As of diameter Ø 225 mm and larger, the intermediate segments are 15°.

These bends are suitable for the transport of waste materials such as dust and chips but also for the transport of grains and such.

They are produced in R=1.5D but other radiuses are available on request.

**Material**

Sendzimir galvanized DX51 DZ 275 MAC.

**Type**

Rolled sheet segments, stitch-welded, and lock-formed together with 6 mm edges for lock rings.

**Options**

- other diameters
- other radiuses
- other sheet thicknesses depending on diameter
- other types of edges or connections

Ø d mm	Code	Amount of segments	R mm	s mm	Weight kg
140	AABA400001	3 + 2	210	0.88	
150	AABA400002	3 + 2	225	0.88	
160	AABA400003	3 + 2	240	0.88	
180	AABA400004	3 + 2	270	0.88	
200	AABA400005	3 + 2	300	0.88	
225	AABA400006	3 + 2	337.5	0.88	
250	AABA400007	3 + 2	375	0.88	
275	AABA400008	3 + 2	412.5	0.88	
280	AABA000142	3 + 2	420	0.88	5.09
315	AABA00013	3 + 2	472.5	0.88	6.30
350	AABA00014	3 + 2	525	0.88	7.90
400	AABA00015	3 + 2	600	0.88	10.10
450	AABA00016	5 + 2	675	0.88	12.90
500	AABA00017	5 + 2	750	0.88	16.30
550	AABA00018	5 + 2	825	0.88	18.70
600	AABA00019	5 + 2	900	0.88	22.80
630	AABA00020	5 + 2	945	0.88	25.00
650	AABA00021	5 + 2	975	0.88	26.70
700	AABA000151	5 + 2	1050	1.00	30.70
750	AABA000152	5 + 2	1125	1.00	34.90
800	AABA000153	5 + 2	1200	1.00	39.60
850	AABA000154	5 + 2	1275	1.00	44.60
900	AABA000155	5 + 2	1350	1.00	58.94
950	AABA000156	5 + 2	1425	1.00	64.52
1000	AABA000157	5 + 2	1500	1.00	63.40