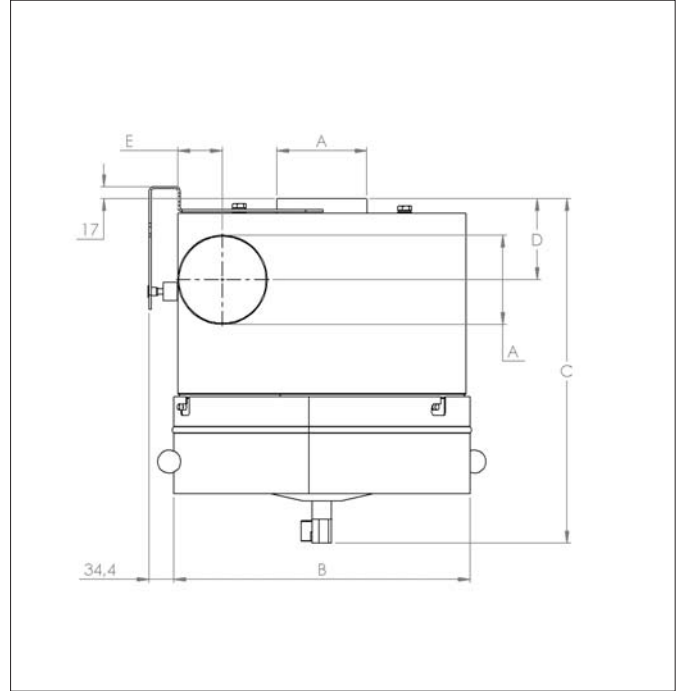


HOUF - Oil mist filters



HOUF - Oil mist filters

Used for oil mist pre-separation from processing machines, where cooling lubricants are used. Is mounted directly at the individual machine, so that oil mists do not reach the central piping system.

After oil mist pre-separation by HOUF the air should be filtered by a multistage oil mist filter, e.g. of the type HOUK, so oil mist emission demands are met.

Air volume : Up to 2000 m³/h
 Vacuum : Up to 2000 Pa
 Filtration efficiency: Normally up to 85%

Applications :

- Oil mist

Functioning :

- Process air max. +35°C is led in through tangential inlet
- Air is filtered through washable pore filter connection, which contributes to cyclone effect
- Oil is collected in the bottom of the HOUF, from where it can either be led back to the machine or drained off through mounted drain cock. Oil pan suspended in bayonet fitting.
- Filtered air is led out through the outlet connection in top to be connected to piping.

Advantages by removing oil mist directly at the machine :

- Reduced hazardous effects on breathing and skin
- Minimize the risk of slippery floors and accidents
- Minimize fire risk and oil mist aerosols damaging electronics in the machines
- Reduced cleaning and maintenance costs
- Reduced energy consumption (reduced air speed in ventilation channels, when there are no heavy oil particles that must be kept airborne, no oil mist deposits on light sources)

Filter unit HOUF :

Model	Delta P ¹⁾ Start/stop	Air volume (m ³ /h)	Efficiency (%)	Inlet Ø (mm)	Outlet Ø (mm)
HOUF 80 ²⁾	500 / 800	300	85	20	20
HOUF 100 ³⁾	500 / 800	500	85	100	100
HOUF 125 ⁴⁾	500 / 800	800	85	125	125
HOUF 160 ⁵⁾	500 / 800	1200	85	160	160
HOUF 200 ⁶⁾	500 / 800	2000	85	200	200

¹⁾ Pressure drop stated over filter cartridge

²⁾ Pore filter 35, 370x160 mm

³⁾ Pore filter 35, 450x210 mm

⁴⁾ Pore filter 35, 491x280 mm

⁵⁾ Pore filter 35, 620x390 mm

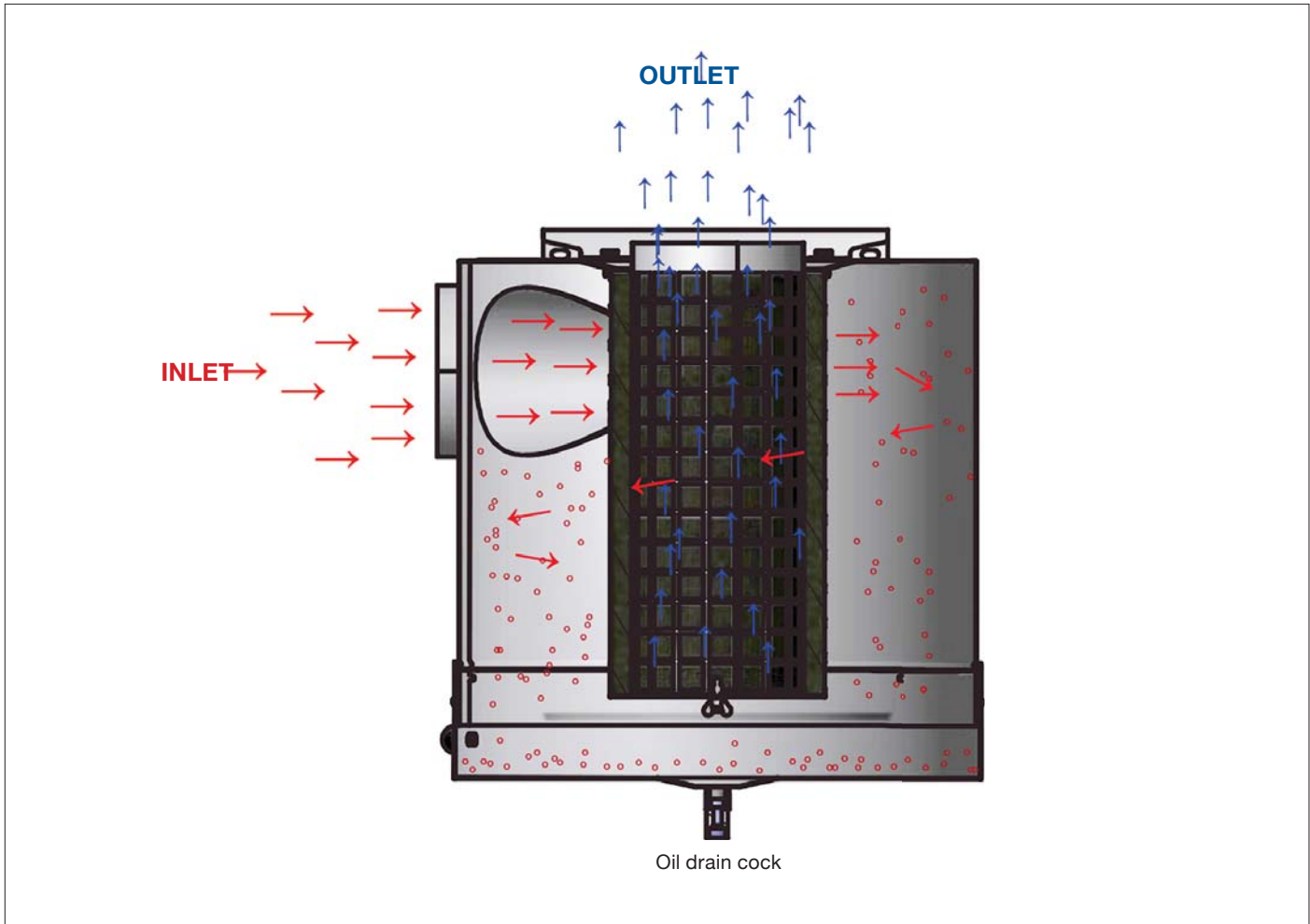
⁶⁾ Pore filter 35, 755x505 mm

Dimensions :

Model	Ø A (mm)	Ø B (mm)	C (mm)	D (mm)	E (mm)
HOUF 80	80	265	354	90	35
HOUF 100	100	315	403	98	34
HOUF 125	125	412	478	113	34
HOUF 160	160	514	583	128	33
HOUF 200	200	611	689	147	35

HOUF - Oil mist filters

Working principle of flow through HOUF filter unit:



Easy connection and operation

HOUF is easily mounted on the wall with 2 bolts through top fitting (4 possible positions) and connected to the piping on inlet and outlet connections. Separated oil can either be led back to the machine or tapped by drain cock in the oil pan. Filter is replaced (or washed) in suitable intervals. Filter is dismantled (without the use of tools) by loosening oil pan suspended in bayonet fitting.

Surface :

The filter cabinet is made in 2 mm black steel plate. Surface powder enamelled RAL 5007/7011.

Construction :

Filter unit type HOUF is constructed according to :

- Machine directive 2006/42/EU
- Directive 2014/68/EU about pressure equipment
- Harmonized standards :
EN 349, EN 4414, EN 12100, EN 60204-1, EN ISO 13857
- Further standards: ISO 3746

! If oil or cooling lubricant contain boric acid, the fine filter must be mounted in galvanized steel frame! Also joints and sealings must be changed.