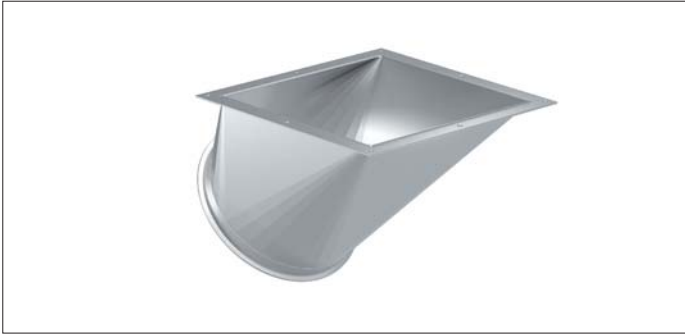


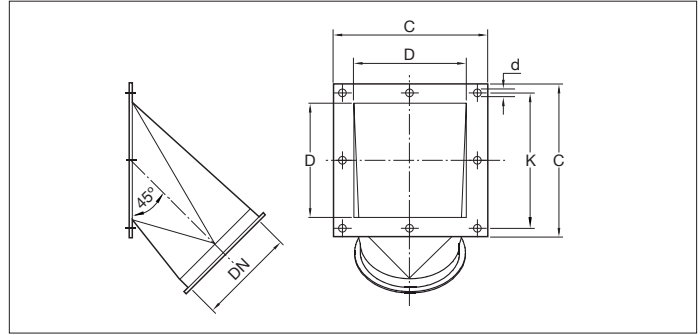
## BAEB Transition pieces at 45°



### BAEB Transition pieces at 45°

Full welded transition pieces designed for the transition between different ducting elements or machinery.

These transition pieces are suitable for the transport of waste materials such as dust and chips but also for the transport of grains and such.



### Material

2.00 mm black steel 1.0330 powder coated in RAL 7032.  
Electrostatically conductive and food-safe powder coating thickness of 30 to 60 µm.  
Temperature resistance up to +80°C.

### Type

Rolled and folded sheets with 6 mm edge for lock rings and flange.

### Options

- FDA and EU compliant food-grade quality
- hot-dipped galvanized or stainless steel execution
- wear resistant lining as of Ø150 (83° Shore)
- equipotential equalization
- other colors
- other diameters or dimensions
- other sheet thicknesses, depending on length and diameter
- other types of edges or connections

Ø d mm	Code	C mm	D mm	K mm	H mm	d mm	s mm	Weight kg
100	BAEB000029	160	120	140	180	6	2.00	0.75
120	BAEB000030	180	140	164	190	6	2.00	0.90
150	BAEB000031	220	180	202	295	6	2.00	1.95
175	BAEB000032	245	200	225	300	6	2.00	2.40
200	BAEB000033	290	250	270	325	6	2.00	2.75
250	BAEB000034	345	300	325	395	6	2.00	4.65
300	BAEB000035	395	350	375	450	6	2.00	5.55