

**INDUSTRIAL  
DUST EXTRACTION  
SOLUTIONS**



## Formula Air

Your partner in industrial  
dust extraction.

Over 30 years we have been manufacturing and distributing industrial dust extraction products in Europe. We can support you by providing the best air quality solutions with the right expertise, ready-to-use techniques and innovations.

Our aim is to contribute to a clean & safe working environment by providing you the best dust extraction solutions ensuring:

- easy access to standard products,
- energy efficient solutions for industrial processes,
- reliable partnership and seamless customer service,
- increased productivity & improved profitability.

### Direct service

---

If you need standard products, we can ship a wide range of ducting items and ventilators from stock from our Belgium Logistics centre within 48 hours.

### Engineer Service

---

If you are looking for a non-standard product or installation, our technical engineers can co-develop the solution. We can produce the engineered items in one of our factories.

### Consult Service

---

If you have a specific problem for your dust extraction, our team can propose and offer a complete solution, build out of standard products.

### Technical pool

---

Our engineers can design a solution based on your briefing, including complete technical information and drawings.

# 200

Formula Air Group employees

# 7 000 m<sup>2</sup>

Warehouse

# 7 000

Product types

# 8 000 m<sup>2</sup>

Production facilities

# 60 000

Products in stock



## Formula Air duct systems

Easy to assemble duct  
systems for any industry.

We offer ducting in a comprehensive range of diameters and accessories for fast and easy installation, and our products can be used for particle transport, welding extraction and similar.

You can choose material, connection method and various other options for your dust extraction solution.

- One-stop shop for all installation components.
- Easy to assemble.
- Easy to take apart when cleaning or reconfiguring.
- Easy to connect to other systems.
- All products tested.
- 100% airtight options for oil mist.
- Laser-welded ducts for a smoother surface.
- Full welded range is also available.

# One-stop shop for duct systems

Full product range is available and most sizes in stock

## Galvanized & AISI ducting components



- Produces less pressure loss compared to spiral ducting.
- Designed for easy cleaning and replacement.
- Can be cut and resized, unlike rolled edge ducting.
- Available in lengths of up to 2 m.

## 2 & 3 mm powder coated ducting components



- The optimal choice for installations between ATEX valves and filters.
- Highly resistant to corrosive substances for long-term durability.

## High vacuum ducting components



- Designed to withstand high-speed environments.
- Resistant to wear, corrosion and harsh industrial environments.

## Other available materials:

- 2 & 3 mm hot dipped galvanized;
- 2 & 3 mm AISI 304;
- Aluminium.



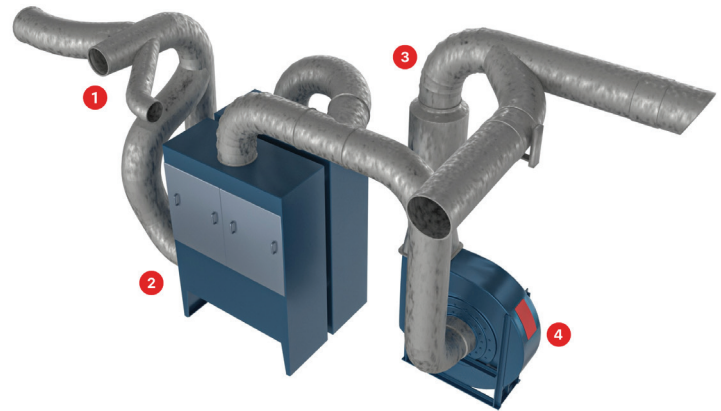
# Full welded airtight solutions for oil mist



Leaks of oil mist, cutting fluids, cooling fluids or other mist-form substances from machinery and ductwork create health and safety hazards for workers.

Our full welded product range is designed to minimize air leakage. We offer:

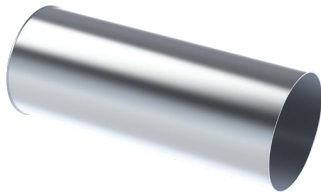
- **wide range of products and sizes** - diameters Ø80-Ø1000 for various applications,
- **lightweight products** - most items steel thickness 1.50 mm, made of Sendzimir plates,
- **cost-effective solution** - the cheaper lightweight solution for heavy-gauge ducting,
- **easy to assemble range** - a wide selection of connecting components.



1 - Suction ducting;  
2 - Oil mist filter;

3 - Delivery ducting;  
4 - Industrial fan;

# Full welded product range in 1.5 mm thickness



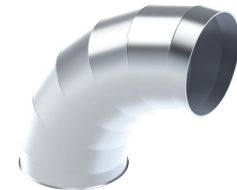
## Laser welded pipes

Made from Sendzimir plates, available in diameters Ø80-Ø1000.



## Laser welded pressed bends

Made from two pressed halves, in diameters Ø80-Ø275 with 6 mm flat edges.



## Segmented bends

Galvanized, in diameters Ø275 and above with 6 mm flat edges.



## Branches and trousers

Hand-welded in Ø80-Ø1000, available in 30°, 45° branches, T-branches and double branches. Galvanized with 6 mm flat edges.



## Tapers and other components

Hand-welded tapers, throttle valves and transition pieces are available. All have 6 mm flat edges.



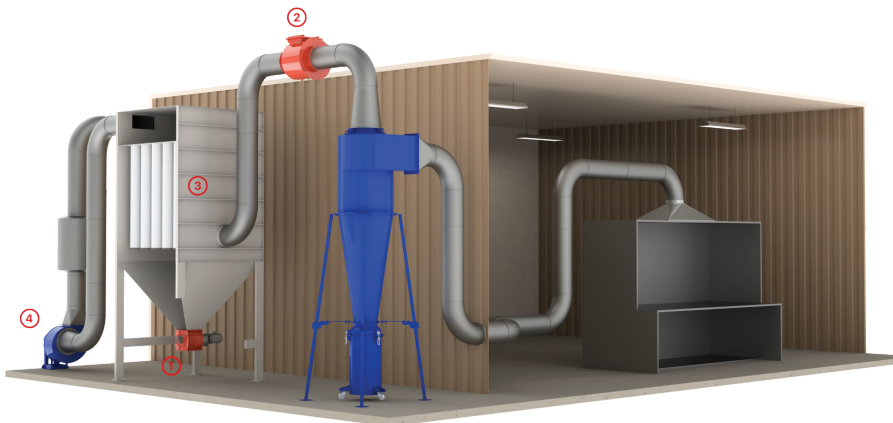
## Connecting components

We offer various strong rings and seals to ensure full airtightness.



# Your one-stop-shop for ATEX Certified Products

At Formula Air, we are dedicated to providing comprehensive solutions that align with the 2014/34/EC ATEX Directive, delivering top-notch protection against the effects of explosions.



## PROTECTING DUST EXTRACTION SYSTEM INSTALLATIONS

1. RVA-X Rotary Valve;
2. ATEX Explosion Isolation Valve;
3. ATEX Filter;
4. ATEX Fan;

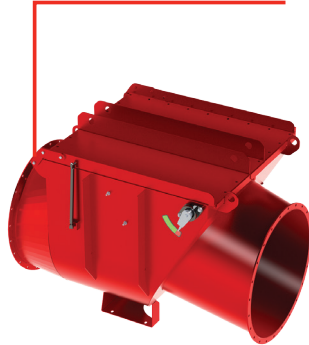


# ATEX Certified Products

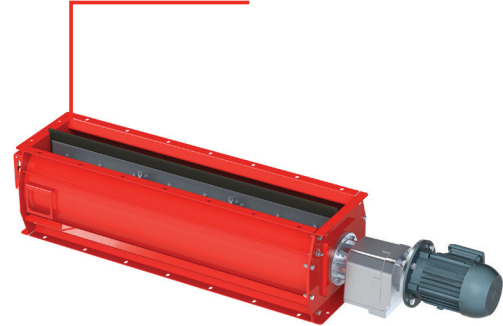
**BADA-FAB ST1**



**BADA-VEX ST2**



**RVA-X**



## Explosion Isolation Valves

Reliable protection against the spread of explosions, safeguarding personnel, equipment and the surrounding environment.

- Handles all kinds of different dusts.
- Wide selection of executions and sizes to fit different industrial processes.
- Completely mechanical, requiring practically no maintenance.

## Rotary Valve

A protective system that prevents or blocks explosions and discharges dust from vessels such as filters, cyclones, silos, or other storage units.

- Automated dust discharge.
- Easily replaced standard spare parts.
- Shipped out within 24 - 48 hrs across the EU.



## Other ATEX products:

- Fire dampers
- Throttle valves
- Fans
- Filters
- Sliding dampers
- Venting panels
- Extinguishing systems



## High efficiency centrifugal fans

Formula Air fans cover an air volume from 50 to 288.000 m<sup>3</sup>/h for the low, medium or high pressure environments.

We offer a wide range of fans in order to assure a solution for all types of industries.

### Clean air models

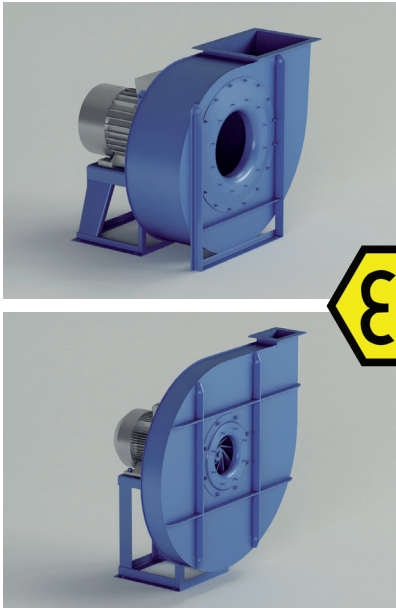
Drying, air conditioning, cooling, pressurizing, ventilation and various gases, dust extraction.

### Loaded air models

Sawdust, various types of shavings, granular material, fiber material and pneumatic transport or centralized cleaning.

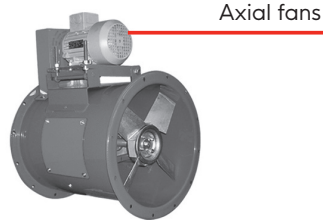


## OTHER PRODUCTS

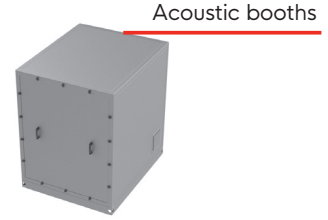


- Low, medium or high pressure.
- Hot dipped galvanized steel, AISI 304 or AISI 316.
- Direct or belt driven.
- 6 executions.
- Standard or ATEX certified.
- Air flow **up to 288 000 m<sup>3</sup>/h.**
- Pressure **up to 25 000 Pa.**
- Sizes **from 220mm up to 1800mm.**
- Installed motor power **up to 315 kW.**
- Standard RAL 5010 execution.

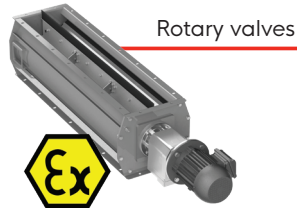
Most fan models in stock



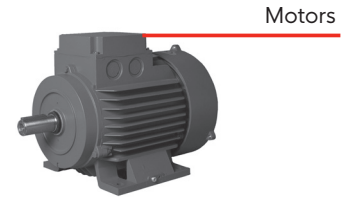
Axial fans



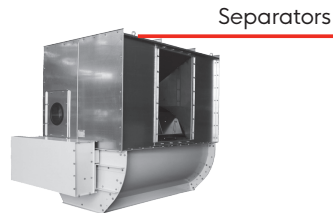
Acoustic booths



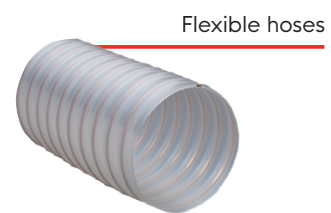
Rotary valves



Motors



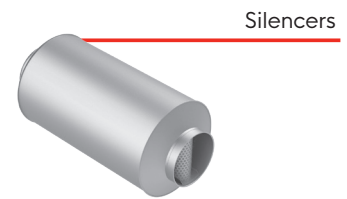
Separators



Flexible hoses



Cyclones



Silencers

# Complete and sustainable solutions for air filtration



Our air filtration products are designed for the extraction of dust, fume, oil mist, and other pollutants. With extensive experience in a wide range of industry and access to various filtration components, we can offer you a filter unit based on filtered material, planned filter location and safety measures to uphold.



ATEX filters available for potentially explosive atmospheres.





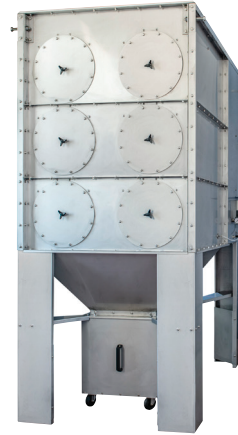
### Sleeve filters

- High performance sleeve filters with pneumatic cleaning used in wood, paper, cardboard & plastic industries.
- Up to 10 000 m<sup>3</sup>/h.



### Oil mist filters

- Made for separating oil mist aerosols in process air from processing machines, where cooling lubricants are used.
- Up to 16 000 m<sup>3</sup>/h.



### Cartridge filters

- Designed for filtration of welding smoke, grinding dusts, cutting smoke and dusty air containing metal, rocks, plastics or various powder mixes.
- Up to 100 000 m<sup>3</sup>/h.

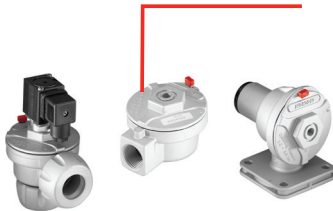


### High vacuum filters

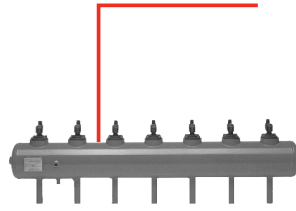
- Compact units for high vacuum.
- Used as vacuum cleaners or connection to hand tools.
- Up to 1 500 m<sup>3</sup>/h.

## Filter accessories

Valves



Air tanks



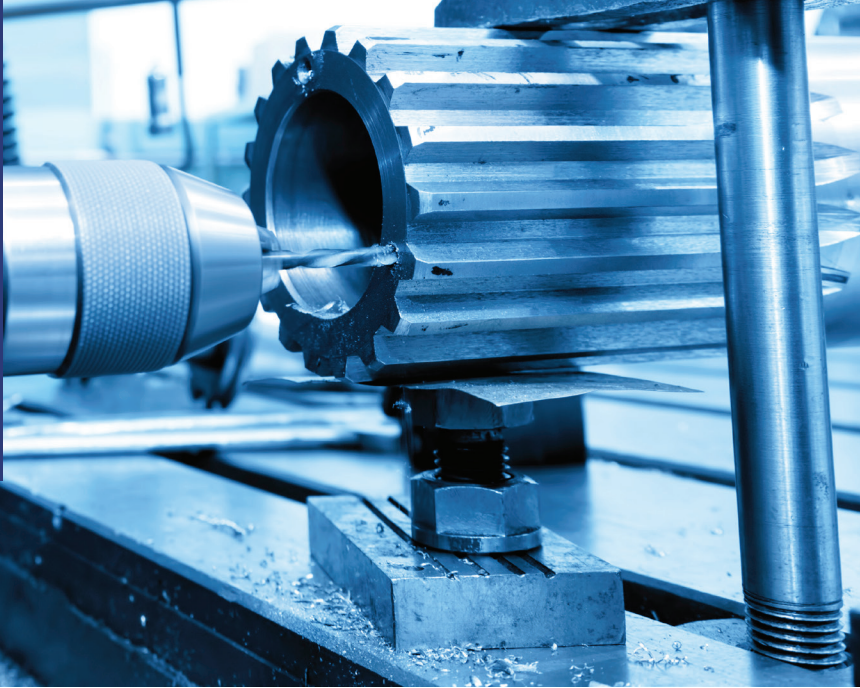
Filter cartridges



Filter Bags



# Proven solutions with fume extraction products for metalworking



Fume extraction components for various metalworking operations including grinding, turning, machining, drilling and surface treatment.

## Flexible fume extraction arms

- Hanging or standing version.
- Can be mounted on walls or tables.
- Standard length up to 4 m and rotational extensions are available.
- ATEX certified version available.



YOGEX ATEX  
extraction arm



YOKO  
suction wall

## Suction tables & suction walls

- Various hanging, mobile or stationary fume extraction products.
- High suction level.

## Fans for extraction arms

- Can overcome significant air flow resistances.
- Particularly efficient within the local exhaust systems.



Fan for  
extraction arms



YOTA  
suction table



Food industry



Recycling industry



Wood industry



Paper industry



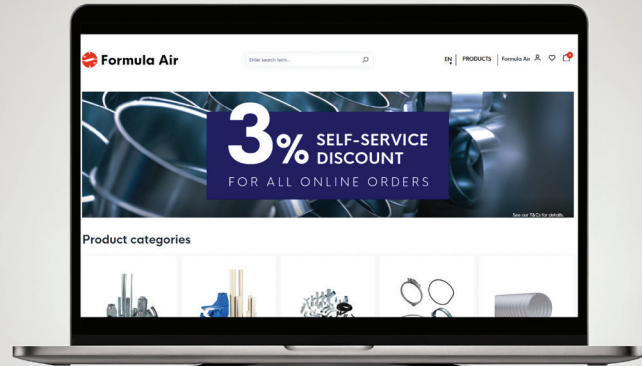
Paint industry



Feed industry

Components  
for complete  
projects in  
any industry

# Discover Formula Air e-Shop



## Fast. Easy. Always Accessible.

We've made it easier than ever to access our full product range with our e-Shop – your 24/7 portal to clean air solutions.

-  60,000+ products available online
-  Real-time stock levels and pricing
-  Self-service discount on all online orders\*
-  Request and manage quotes digitally
-  Priority shipping for e-Shop users
-  Shop from any device, anytime, anywhere

*\*The 3% discount is valid from 29/04/2025 to 31/12/2026, see T&Cs online.*

