

BADF Manual pipe gates

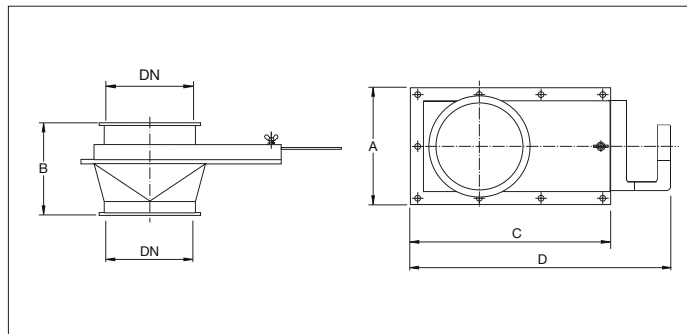


BADF Manual pipe gates

Full welded pipe gates to regulate, open, or close a vertical ducting line in an installation (possibility to regulate).

The gate blade is locked in a desired position by tightening the butterfly nut on the handle.

Mostly used for falling material under cyclones, silos and such, these gates are suitable for the transport of waste materials such as dust and chips but also for the transport of grains and such.



Material

2.00 mm black steel 1.0330 powder coated in RAL 7032.
Electrostatically conductive and food-safe powder coating thickness of 30 to 60 µm.
Temperature resistance up to +80°C.

Type

Rolled sheets with 6 mm edges for lock rings.

Options

- FDA and EU compliant food-grade quality
- electro-galvanized or stainless steel execution
- wear resistant lining as of Ø150 (83° Shore)
- equipotential equalization
- other colors
- other types of edges or connections



Butterfly nut to lock the blade in the desired position

Ø d mm	Code	A mm	B mm	L mm	H mm	s mm	Weight kg
100	BADF000002	160	104	225	310	2.00	2.77
120	BADF000003	180	138	245	330	2.00	3.31
150	BADF000004	220	152	295	395	2.00	4.60
175	BADF000005	245	212	320	440	2.00	6.20
200	BADF000006	290	182	410	510	2.00	7.92
250	BADF000007	345	217	435	535	2.00	11.00
300	BADF000008	395	277	515	610	2.00	14.00