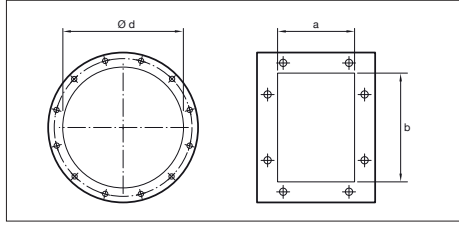
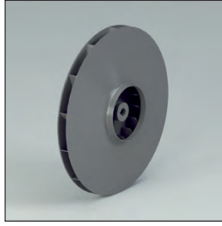
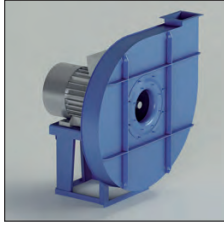


VP-N - VP-N/T



VP-N - VP-N/T
Direct and indirect driven centrifugal fans.
Impeller with negative (backwards curved) blades.

Application
For the transport of clean air.

Application area
Low-medium air volumes, high pressures.

Technical specifications:
Air volume: 140 up to 22.000 m³/h
Total pressure: 100 up to 3.000 daPa.

Model	Installed power (kW)	Axle height (mm)	Poles	Inlet $\varnothing d$ (mm)	Outlet dimensions a x b (mm)	Inspection door	Welding fan housing
VP400/N2	0.55	71	2	140	76 x 105	Optional	Optional
VP400/N2R	0.75	80	2	140	76 x 105	Optional	Optional
VP450/N2	1.1	80	2	160	85 x 117	Optional	Optional
VP450/N2R	1.5	90	2	160	85 x 117	Optional	Optional
VP500/N2R	1.5	90	2	185	95 x 131	Optional	Optional
VP500/N2	2.2	90	2	185	95 x 131	Optional	Optional
VP560/N2R	2.2	90	2	200	105 x 146	Optional	Optional
VP560/N2R	3	100	2	200	105 x 146	Optional	Optional
VP560/N2	3	100	2	200	105 x 146	Optional	Optional
VP560/N2	4	112	2	200	105 x 146	Optional	Optional
VP630/N2R	4	112	2	225	117 x 166	Optional	Optional
VP630/N2R	5.5	132	2	225	117 x 166	Optional	Optional
VP630/N2	5.5	132	2	225	117 x 166	Optional	Optional
VP630/N2	7.5	132	2	225	117 x 166	Optional	Optional
VP710/N2R	7.5	132	2	250	131 x 185	Optional	Included
VP710/N2R	11	160	2	250	131 x 185	Optional	Included
VP710/N2	11	160	2	250	131 x 185	Optional	Included
VP710/N2	15	160	2	250	131 x 185	Optional	Included
VP800/N2R	15	160	2	275	148 x 207	Optional	Included
VP800/N2R	18.5	160	2	275	148 x 207	Optional	Included
VP800/N2	18.5	160	2	275	148 x 207	Optional	Included
VP800/N2	22	180	2	275	148 x 207	Optional	Included
VP900/N2R	22	180	2	325	166 x 231	Optional	Included
VP900/N2R	30	200	2	325	166 x 231	Optional	Included
VP900/N2	30	200	2	325	166 x 231	Optional	Included
VP900/N2	37	200	2	325	166 x 231	Optional	Included
VP1000/N2R	45	225	2	350	185 x 258	Optional	Included
VP1000/N2R	55	250	2	350	185 x 258	Optional	Included
VP1000/N2	55	250	2	350	185 x 258	Optional	Included
VP1000/N2	75	280	2	350	185 x 258	Optional	Included
VP1120/N2R	75	280	2	400	205 x 288	Optional	Included
VP1120/N2R	90	280	2	400	205 x 288	Optional	Included
VP1120/N2	90	280	2	400	205 x 288	Optional	Included
VP1120/N2	110	315	2	400	205 x 288	Optional	Included

VP-N - VP-N/T

•Size	• Max rpm		
	CLASSE I	CLASSE II	CLASSE III
VP400	5000		
VP450/R	5000		
VP450	5000		
VP500	5000		
VP560/R	5000		
VP560	4700	5000	
VP630/R	4400	4850	
VP630	4100	4550	5000
VP710/R	3700	4100	4500
VP710	3550	3850	4250
VP800/R	3400	3700	4000
VP800	3250	3550	3850
VP900/R	3100	3400	3700
VP900	2950	3250	3550
VP1000/R	3100	3550	3850
VP1000	3300	3550	3900
VP1120/R	3200	3450	3700
VP1120	3000	3250	3500
VP1250/R	2800	3000	3200
VP1250	2650	2800	3000
VP1400	2350	2500	2650
VP1600	2000	2150	2300

• Values valid up to 60°C

• between	60°C	100°C	• and	• degrade speed
	100°C	150°C		
150°C	200°C	16%		
200°C	250°C	23%		
250°C	300°C	30%		
300°C	350°C	37%		
350°C	400°C	45%		
400°C	450°C	54%		
450°C	500°C	64%		

