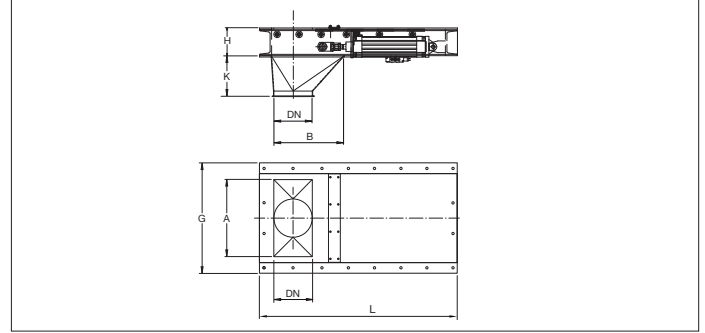


BADS Pneumatic Redler outlet gates



BADS Pneumatic Redler outlet gates

Full welded pneumatic Redler outlet gates to discharge material from a cyclone, a silo, or such. The gate blade is mounted on roller bearings and the base frame is 5 mm thick.

The outlet gate blade is secured in an open or closed position by means of the linear cylinder foreseen with limit switches and controlled by 5/2 monostable solenoid valve 24 V DC.

Suitable for applications with bulk material but not for installations in overpressure or pneumatic transport.

The gate must be installed horizontally and closes in case of power failure.

Material

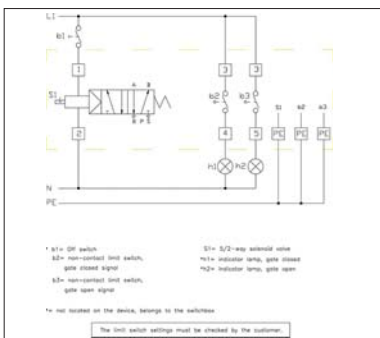
2.00 mm black steel 1.0330 powder coated in RAL 7032.
Base frame 5.00 mm black steel 1.0330 powder coated in RAL 7032.
Electrostatically conductive and food-safe powder coating thickness of 30 to 60 µm.
Temperature resistance up to +80°C.

Type

Welded and folded plates with or without 6 mm edges for lock rings.

Options

- FDA and EU compliant food-grade quality
- with seal
- other voltage : 220 V AC
- left and right hand versions
- hot-dipped galvanized or stainless steel execution
- wear resistant lining as of Ø150 (83° Shore)
- equipotential equalization or ATEX
- other colors
- other types of edges or connections



Wiring diagram of 5/2 solenoid valve

! Max. air pressure in solenoid valve : 8 Bar.

! Please specify LEFT or RIGHT orientation when ordering

* Weights are models with transition piece

Ø d mm	Code w. transition w/o. transition	A mm	B mm	G mm	H mm	K mm	L mm	s mm	Weight kg*
150	BADS000001 BADS000006	450	333	580	126	174	850	2.00	65.00
175	BADS000002 BADS000007	450	333	580	126	174	850	2.00	70.20
200	BADS000003 BADS000008	600	383	740	126	274	950	2.00	90.00
250	BADS000004 BADS000009	600	433	740	126	274	1050	2.00	97.00
300	BADS000005 BADS000010	600	453	740	126	274	1080	2.00	105.00