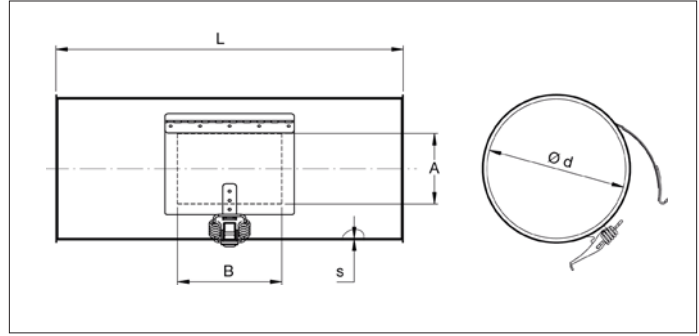
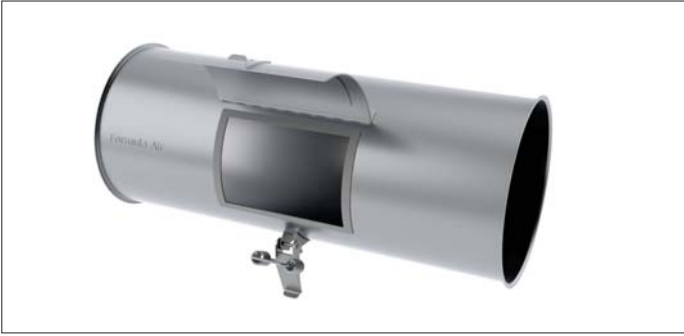


AAAC Inspection pipes



Inspection pipes

Inspection pipes are longitudinally spot-welded or welded with a stitch-welder for use in under-pressure and pressureless systems.

The inspection door is always produced with an inner plate for a smooth inner surface inside the pipe and a foam seal is applied along the edge of the opening to insure airtightness.

Material

Sendzimir galvanized DX51 DZ 275 MAC.

Type

Rolled stitch-welded sheets with 6 mm edges for lock rings. Including locking mechanism and hinge.

Options

- other lengths
- other sheet thicknesses depending on diameter and length
- other types of edges or connections

Ø d mm	Code	A x B mm	L mm	s mm	Weight kg
80	AAAC000001	80 x 150	490	0.75	1.15
100	AAAC000002	80 x 150	490	0.75	1.36
120	AAAC000003	100 x 150	490	0.75	1.57
125	AAAC000021	100 x 150	490	0.75	1.62
140	AAAC000004	100 x 150	490	0.75	1.78
150	AAAC000005	100 x 150	490	0.75	1.87
160	AAAC000006	100 x 150	490	0.75	1.99
180	AAAC000007	100 x 150	490	0.75	2.20
200	AAAC000008	100 x 150	490	0.75	2.41
225	AAAC000009	100 x 150	490	0.75	2.67
250	AAAC000010	100 x 150	490	0.75	2.93
275	AAAC000011	100 x 150	490	0.75	3.21
280	AAAC000022	100 x 150	490	0.75	3.24
300	AAAC000012	100 x 150	490	0.75	3.51
315	AAAC000013	100 x 150	490	0.75	3.61
350	AAAC000014	150 x 200	490	0.75	4.79
400	AAAC000015	150 x 200	490	0.88	5.40
450	AAAC000016	150 x 200	490	0.88	6.00
500	AAAC000017	150 x 200	490	0.88	6.63
550	AAAC000018	150 x 200	490	0.88	6.63
600	AAAC000019	150 x 200	490	0.88	7.83
630	AAAC000020	150 x 200	490	0.88	8.23