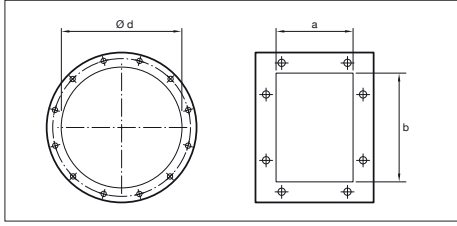
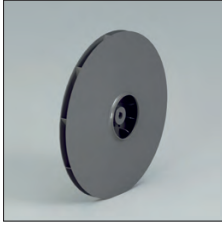
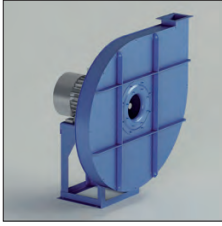


VC-N - VC-N/T



VC-N - VC-N/T
 Direct and indirect driven centrifugal fans.
 Impeller with negative (backwards curved) blades.

Application
 For the transport of clean air.

Application area
 Low-medium air volumes, high pressures.

Technical specifications:
 Air volume: 150 up to 10.000 m³/h
 Total pressure: 160 up to 2.850 daPa.

| Model | Installed power (kW) | Axle height (mm) | Poles | Inlet \varnothing d (mm) | Outlet dimensions a x b (mm) | Inspection door | Welding fan housing |
|------------|----------------------|------------------|-------|----------------------------|------------------------------|-----------------|---------------------|
| VC500/N2R | 1.1 | 80 | 2 | 140 | 76 x 105 | Optional | Optional |
| VC500/N2 | 1.5 | 90 | 2 | 140 | 76 x 105 | Optional | Optional |
| VC560/N2R | 1.5 | 90 | 2 | 160 | 85 x 117 | Optional | Optional |
| VC560/N2 | 2.2 | 90 | 2 | 160 | 85 x 117 | Optional | Optional |
| VC630/N2R | 3 | 100 | 2 | 180 | 95 x 131 | Optional | Optional |
| VC630/N2R | 4 | 112 | 2 | 180 | 95 x 131 | Optional | Optional |
| VC630/N2 | 4 | 112 | 2 | 180 | 95 x 131 | Optional | Optional |
| VC630/N2 | 5.5 | 132 | 2 | 180 | 95 x 131 | Optional | Optional |
| VC710/N2R | 5.5 | 132 | 2 | 200 | 105 x 146 | Optional | Included |
| VC710/N2R | 7.5 | 132 | 2 | 200 | 105 x 146 | Optional | Included |
| VC710/N2 | 7.5 | 132 | 2 | 200 | 105 x 146 | Optional | Included |
| VC710/N2 | 11 | 160 | 2 | 200 | 105 x 146 | Optional | Included |
| VC800/N2R | 7.5 | 132 | 2 | 225 | 117 x 166 | Optional | Included |
| VC800/N2R | 11 | 160 | 2 | 225 | 117 x 166 | Optional | Included |
| VC800/N2 | 11 | 160 | 2 | 225 | 117 x 166 | Optional | Included |
| VC800/N2 | 15 | 160 | 2 | 225 | 117 x 166 | Optional | Included |
| VC900/N2R | 15 | 160 | 2 | 250 | 131 x 185 | Optional | Included |
| VC900/N2R | 18.5 | 160 | 2 | 250 | 131 x 185 | Optional | Included |
| VC900/N2 | 18.5 | 160 | 2 | 250 | 131 x 185 | Optional | Included |
| VC900/N2 | 22 | 180 | 2 | 250 | 131 x 185 | Optional | Included |
| VC1000/N2R | 30 | 200 | 2 | 275 | 148 x 207 | Optional | Included |
| VC1000/N2R | 37 | 200 | 2 | 275 | 148 x 207 | Optional | Included |
| VC1000/N2 | 37 | 200 | 2 | 275 | 148 x 207 | Optional | Included |
| VC1000/N2 | 45 | 225 | 2 | 275 | 148 x 207 | Optional | Included |
| VC1120/N2R | 45 | 225 | 2 | 325 | 166 x 231 | Optional | Included |
| VC1120/N2R | 55 | 250 | 2 | 325 | 166 x 231 | Optional | Included |
| VC1120/N2 | 55 | 250 | 2 | 325 | 166 x 231 | Optional | Included |
| VC1120/N2 | 75 | 280 | 2 | 325 | 166 x 231 | Optional | Included |

FA107/FM12014/V2.0.LK

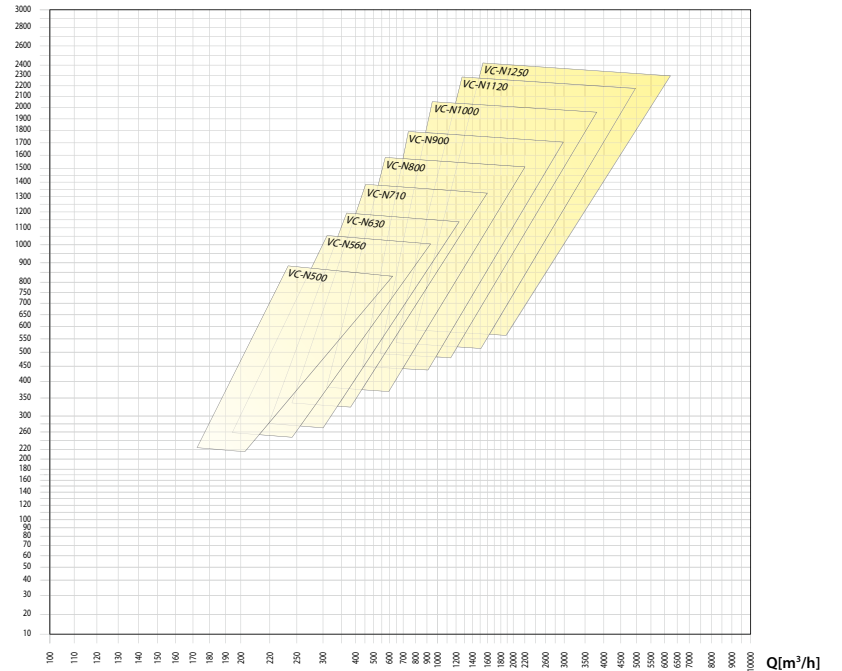
VC-N - VC-N/T

| Size | Max rpm | | |
|----------|----------|-----------|------------|
| | CLASSE I | CLASSE II | CLASSE III |
| VC500 | 5000 | | |
| VC560/R | 5000 | | |
| VC560 | 4700 | 5000 | |
| VC630/R | 4400 | 4850 | |
| VC630 | 4100 | 4550 | 5000 |
| VC710/R | 3700 | 4100 | 4500 |
| VC710 | 3550 | 3850 | 4250 |
| VC800/R | 3400 | 3700 | 4000 |
| VC800 | 3250 | 3550 | 3850 |
| VC900/R | 3100 | 3400 | 3700 |
| VC900 | 2950 | 3250 | 3550 |
| VC1000/R | 3100 | 3550 | 3850 |
| VC1000 | 3300 | 3550 | 3900 |
| VC1120/R | 3200 | 3450 | 3700 |
| VC1120 | 3000 | 3250 | 3500 |
| VC1250/R | 2800 | 3000 | 3200 |
| VC1250 | 2650 | 2800 | 3000 |

• Values valid up to 60°C

| • between | 60°C | • and | 100°C | • degrade speed | 4% |
|-----------|-------|-------|-------|-----------------|-----|
| | 100°C | | 150°C | | 10% |
| 150°C | 200°C | 16% | | | |
| 200°C | 250°C | 23% | | | |
| 250°C | 300°C | 30% | | | |
| 300°C | 350°C | 37% | | | |
| 350°C | 400°C | 45% | | | |
| 400°C | 450°C | 54% | | | |
| 450°C | 500°C | 64% | | | |

pt [mmH₂O]



FA107/FM12014/V2.0.LK

