

Separators and rotary valves

Cyclones

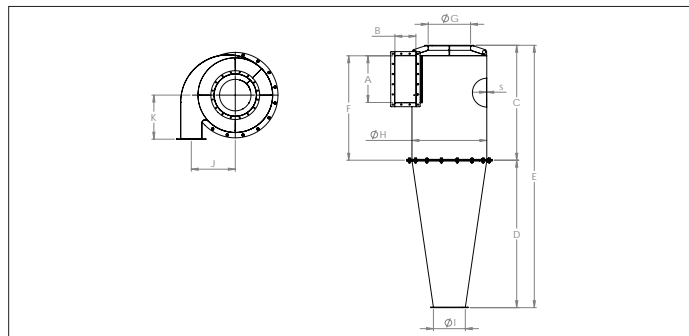
Separators

Rotary valves

Gear motors

Cutters

FA cyclones



FA cyclones

The FA cyclone is a high performance separator that ensures an effective separation of fine and heavy particles. Entirely welded, the FA cyclone is made of 2 and 3 mm sheet metal, painted with anti-rust paint and topcoat of epoxy paint.

Accessories

- Support legs with connection at the base of the cone
- 90 L dust bucket
- Connection piece for rotary valve
- Expansion chamber
- Leg extensions for Big-Bag use
- In- and outlet pieces

Material

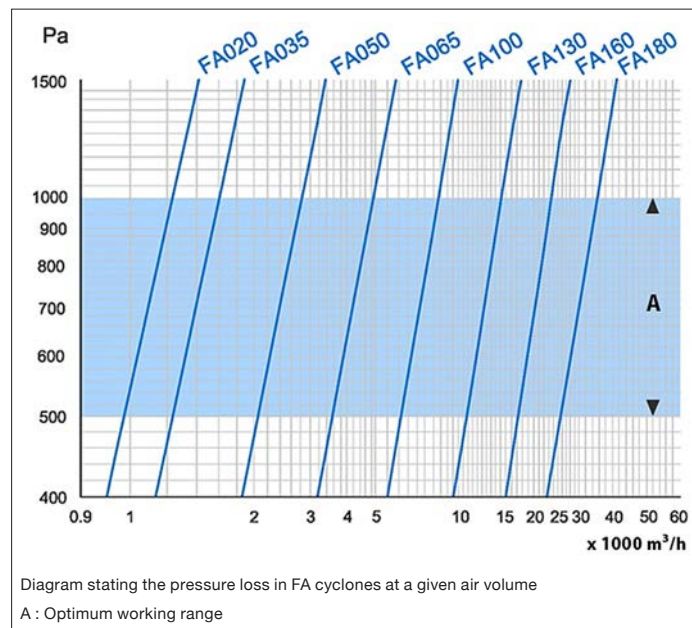
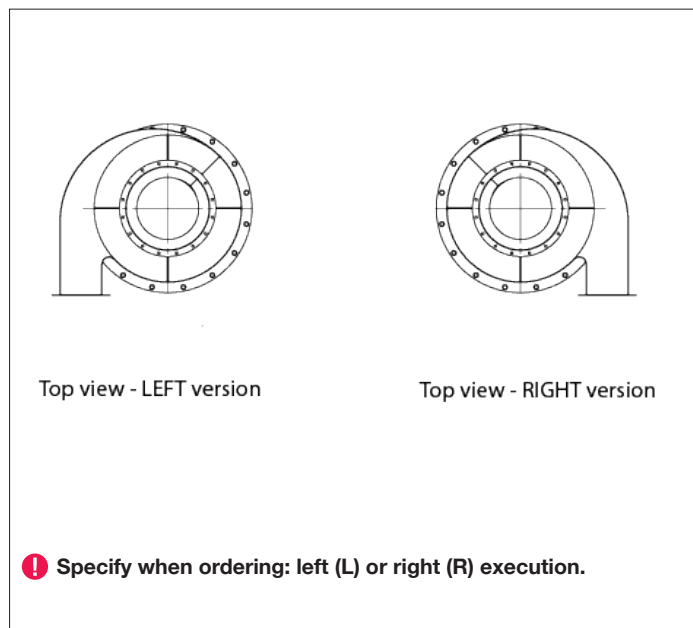
St 37.2 black steel powder coated RAL 5010, temperature resistance : +80°C.

Type

2 mm rolled plates welded together.
Hopper and body assembled by bolts.

Options

- Stainless steel (AISI 304L or 316L)
- Galvanized
- Reinforced
- Other legs
- Inspection door
- Other RAL colors
- Removable wear plate on inlet



Model	A (mm)	B (mm)	C (mm)	D (mm)	E (mm)	F (mm)	Int. ØG (mm)	Int. ØH (mm)	Int. ØI (mm)	J (mm)	K (mm)	s (mm)	Weight kg
FA 20	230	100	645	820	1465	570	225	400	160	234	240	2	25.0
FA 35	285	125	770	1020	1790	710	250	500	200	290	300	2	35.0
FA 50	350	160	770	1020	1790	710	250	500	200	308	300	2	36.0
FA 65	445	200	1095	1405	2500	998	400	710	300	419	420	2	70.0
FA 100	560	300	1675	2050	3725	1490	550	1000	400	615	600	2	143.0
FA 130	750	400	2270	2820	5090	2000	700	1250	450	782	700	3	339.0
FA 160	1100	500	2270	3150	5420	2000	800	1600	550	1050	900	3	479.0
FA 180	1500	500	2800	3450	6250	2500	1000	1800	630	1150	950	3	682.0

FA cyclones



FA cyclone with legs



FA cyclone with legs and dust bucket



FA cyclone expansion chamber with leg extensions



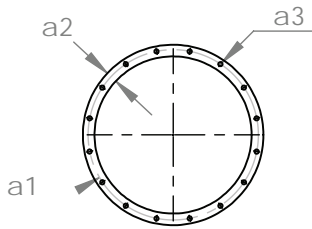
FA cyclone dust bucket with flexible connection



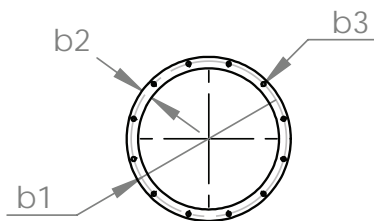
FA cyclone dust bucket (heavy model)



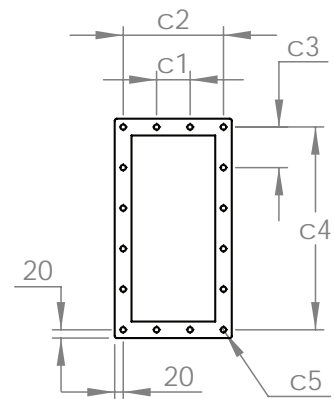
FA cyclone expansion chamber for a better air/particles separation



Upper outlet flange



Lower outlet flange

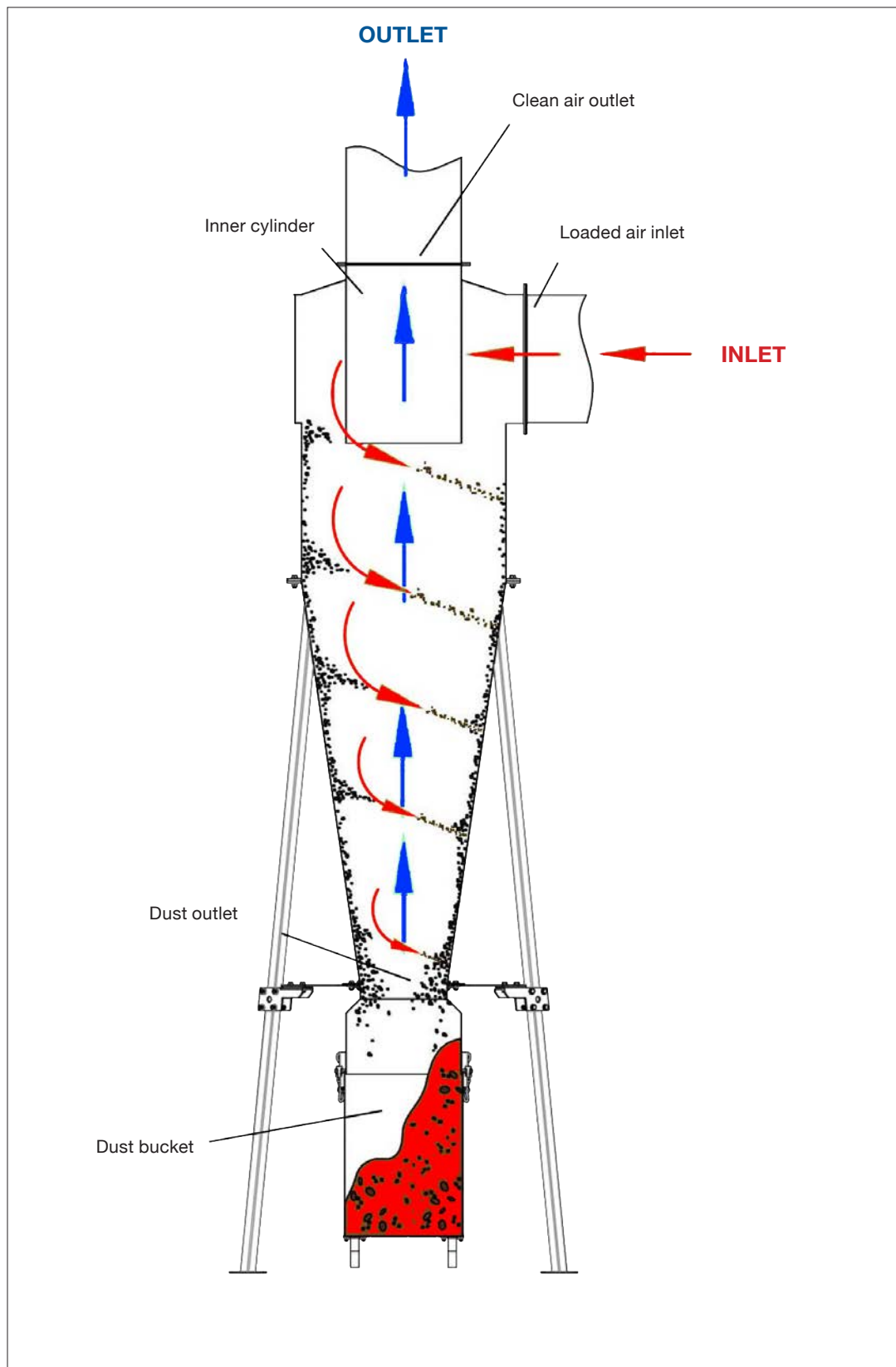


Square inlet flange

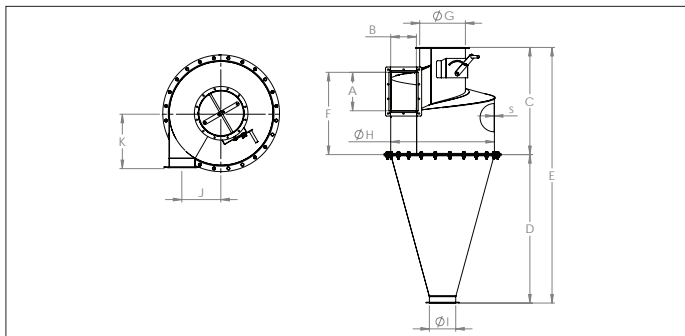
Model	Air volume (m³/h)	Upper outlet flange			Lower outlet flange			Square inlet flange				
		Øa1	a2	Ø a3	Øb1	b2	Øb3	c1	c2	c3	c4	Øc5
FA 20	0,1	260	25	12 x 9.5	195	25	8 x 9.5	70	2 x 70	90	3x 90	13
FA 35	0,3	285	25	12 x 9.5	235	25	12 x 9.5	82,5	2x 82.5	108	3x 108	13
FA 50	0,3	285	25	12 x 9.5	235	25	12 x 9.5	100	2x 100	97.5	4x 97.5	13
FA 65	0,7	439	30	16 x 11.5	336	25	12 x 9.5	80	3x 80	97	5x 97	13
FA 100	2,1	590	30	16 x 11.5	439	30	16 x 11.5	113	3x 113	100	6x 100	13
FA 130	4,3	750	40	24 x 11.5	489	30	16 x 11.5	110	4x 110	99	8x 99	13
FA 160	7,3	850	40	24 x 11.5	590	30	16 x 11.5	108	5x 108	104	11x 104	13
FA 180	11,0	1050	40	24 x 11.5	670	30	24 x 11.5	108	5x 108	103	15x 103	13

FA cyclones

Working principle of flow through FA cyclone :



FS cyclones



FS cyclones

Used in the paper industry, wood industry and cardboard industry Agricultural industry is also a main industry for this type of cyclone. Generally the FS cyclone is suitable for all installations that do not require a high performance separation.

The airflow is controlled by an integrated throttle valve.

Accessories

- Support legs with connection at the base of the cone
- 90 L dust bucket
- Connection piece for rotary valve
- Leg extensions for Big-Bag use
- In- and outlet pieces

Material

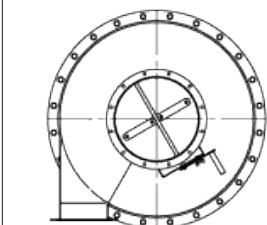
Sendzimir galvanized steel with integrated throttle valve, temperature resistance : +80°C.

Type

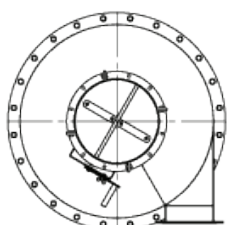
1.25 mm or 2 mm rolled plates welded together.
Hopper and body assembled by bolts.

Options

- Stainless steel (AISI 304L or 316L)
- Painted
- Reinforced
- Other legs
- Inspection door
- Removable wear plate on inlet



Top view - LEFT version



Top view - RIGHT version

Specify when ordering: left (L) or right (R) execution.

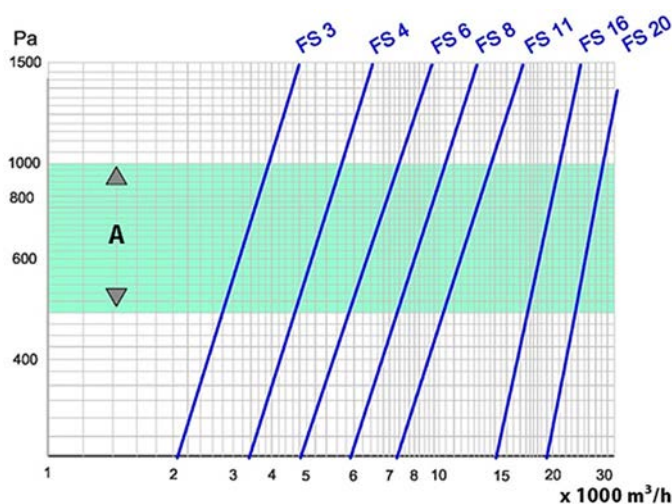


Diagram stating the pressure loss in FS cyclones at a given air volume
A : Optimum working range

Model	A (mm)	B (mm)	C (mm)	D (mm)	E (mm)	F (mm)	ø G (int.) (mm)	ø H (int.) (mm)	ø I (int.) (mm)	J (mm)	K (mm)	s (mm)	Weight kg
FS 3	300	200	830	1150	1980	640	350	800	200	302	420	1,25	68.0
FS 4	350	250	1150	1130	2280	740	400	900	200	325	500	1,25	83.0
FS 6	400	300	1080	1500	2580	840	450	1120	250	411	580	1,25	112.0
FS 8	450	350	1230	1700	2930	950	500	1250	250	451	675	1,25	147.0
FS 11	530	400	1410	1900	3310	1130	600	1600	300	601	790	1,25	206.0
FS 16	640	480	1700	1900	3600	1350	700	1800	300	661	970	1,25	252.0
FS 20	800	500	1750	1700	3450	1410	1000	2000	400	750	980	2	409.0

FS cyclones



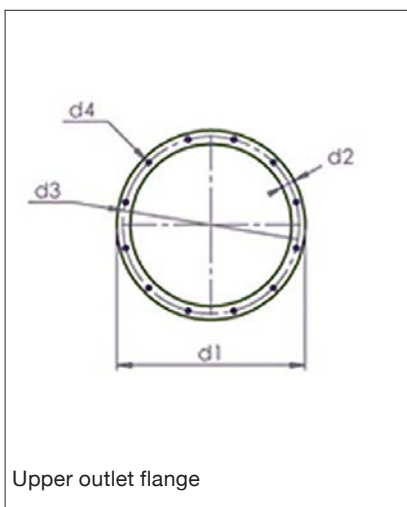
FS cyclone with legs and dust bucket



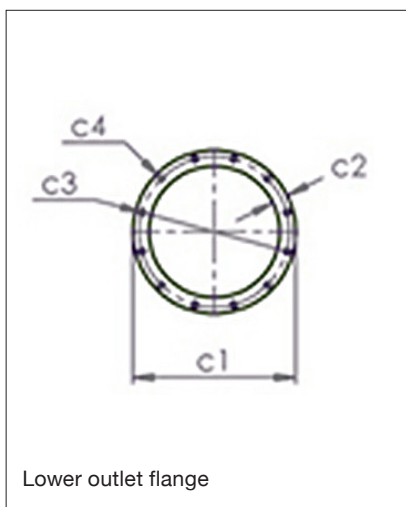
FS cyclone legs



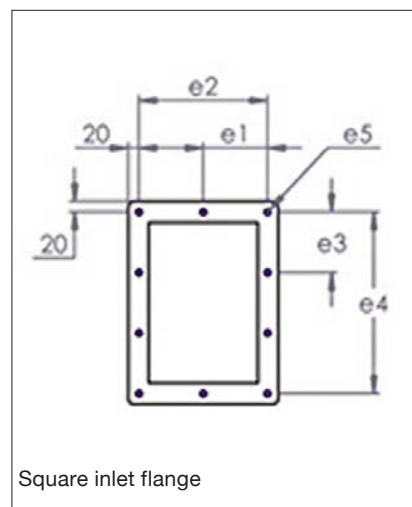
FS cyclone dust bucket with flexible connection



Upper outlet flange



Lower outlet flange

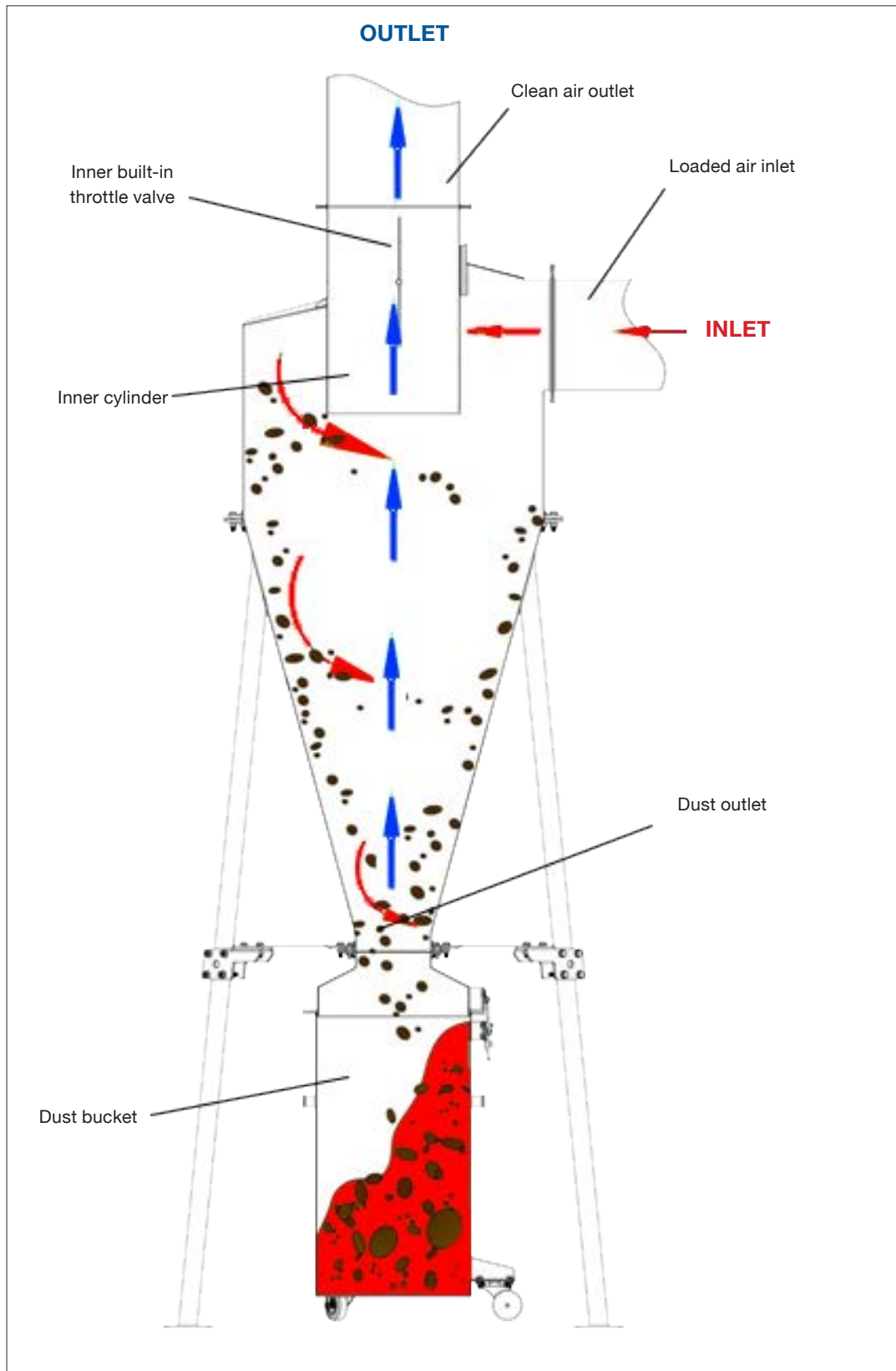


Square inlet flange

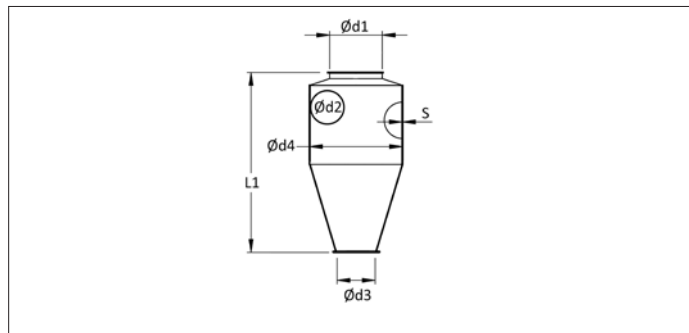
Model	Air volume (m³/h)	Upper outlet flange				Lower outlet flange				Square inlet flange				
		Ød1	d2	Ød3	d4	Øc1	c2	Øc3	c4	e1	e2	e3	e4	e5
FS 3	0,5	415	30	389	12 x Ø11.5	255	25	235	8 x Ø9.5	120	2 x 120	113	3 x 113	Ø 11.5
FS 4	0,7	465	30	439	16 x Ø11.5	255	25	235	8 x Ø9.5	97	3 x 97	97,5	4 x 97.5	Ø 11.5
FS 6	1,4	515	30	489	16 x Ø11.5	305	25	285	12 x Ø9.5	113	3 x 113	110	4 x 110	Ø 11.5
FS 8	1,9	565	30	540	16 x Ø11.5	305	25	285	12 x Ø9.5	97,5	4 X 97.5	490	5 X 98	Ø 11.5
FS 11	3,6	665	30	640	16 x Ø11.5	355	25	336	12 x Ø9.5	110	4 x 110	114	5 X 114	Ø 11.5
FS 16	4,7	785	40	750	24 x Ø11.5	355	25	336	12 x Ø9.5	104	104 X 5	113	6 X 113	Ø 11.5
FS 20	6,1	1085	40	1050	24 x Ø11.5	465	30	439	16 x Ø11.5	108	5 X 108	105	105 X 108	Ø 11.5

FS cyclones

Working principle of flow through FS cyclone :



FK cyclones



FK cyclones

Used for granules in the plastic industry.

Generally the FK cyclone is suitable for all installations that do not require a high performance separation.

Material

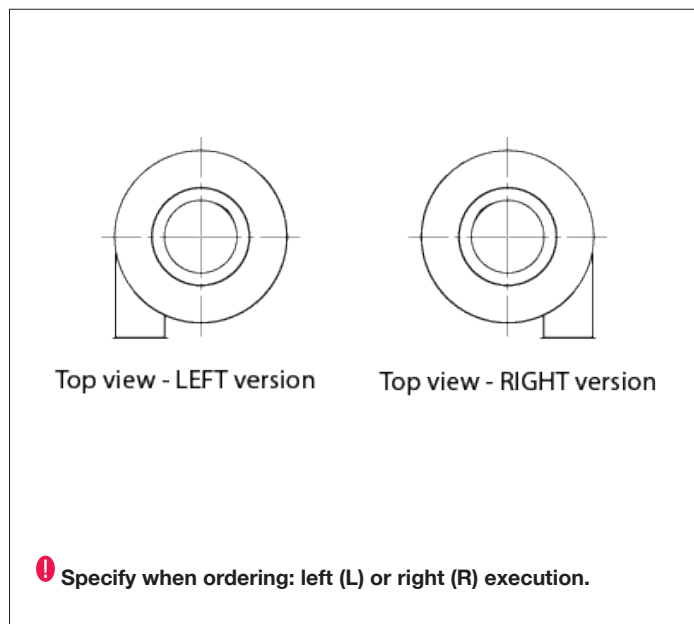
Sendzimir galvanized steel, temperature resistance : +80°C.

Type

1 mm rolled plates welded together.
Hopper and body lockformed.

Options

- Stainless steel (AISI 304L or 316L)
- Painted
- Reinforced



Model	Air volume (m³/h)	L1 (mm)	Ø d1 (mm)	Ø d2 (mm)	Ø d3 (mm)	Ø d4 (mm)	s (mm)
FK 1	1100 -> 2000	800	150	160	150	600	1.0
FK 2	1300 -> 2300	830	200	160	160	600	1.0
FK 3	1300 -> 2000	500	200	160	160	600	1.0

RVA Rotary valves



RVA rotary valves

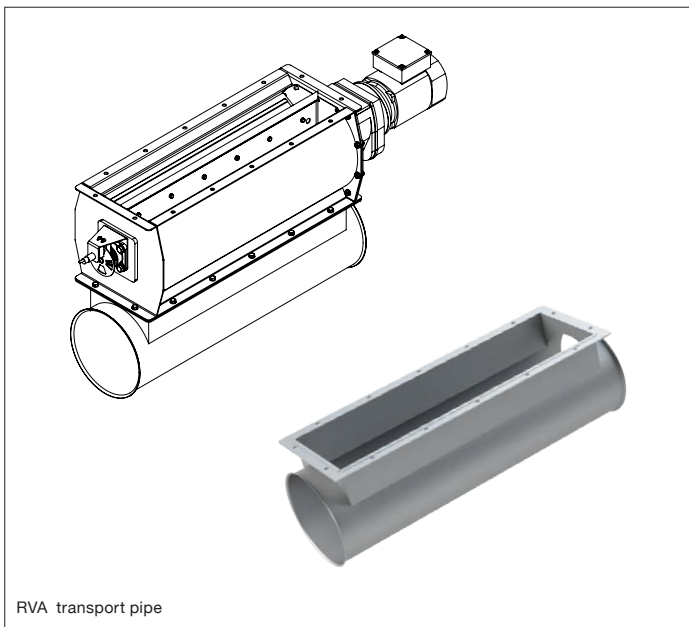
The RVA rotary valves are designed to discharge dust and other materials from filters and cyclones and treat volumes ranging from 10 to 83 m³/h. They are equipped with a visual rotation indicator.

These rotary valves are produced according to the following harmonized directives/standards :

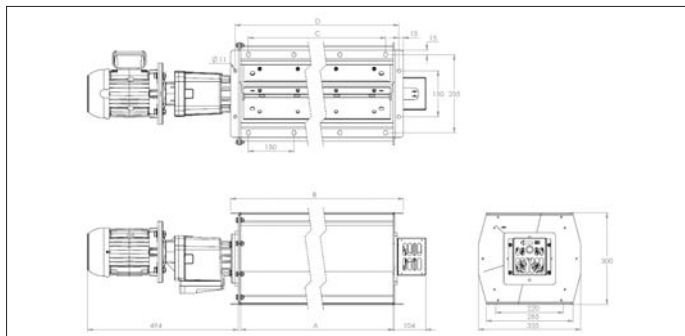
- 2006/42/EC ; Machine directive
- 2014/35/EC ; Low voltage directive
- 2014/30/EC ; Electromagnetic compatibility directive

Accessories

- Rotation detectors
- Counter flanges
- Replacement rubber blades
- Transport and discharge pipes



RVA transport pipe



Material

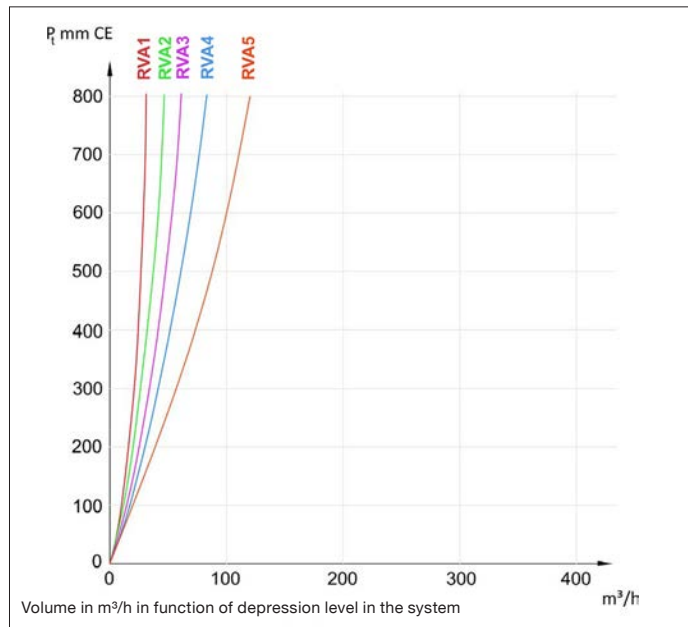
St 37.2 black steel with primary paint and epoxy powder coating RAL 5010, temperature resistance : +80°C.
6 chamber rotor with rubber blades, temperature range -30°C up to +70°C.

Type

3 mm rolled plates welded together.
End plates bolted to the body.

Options

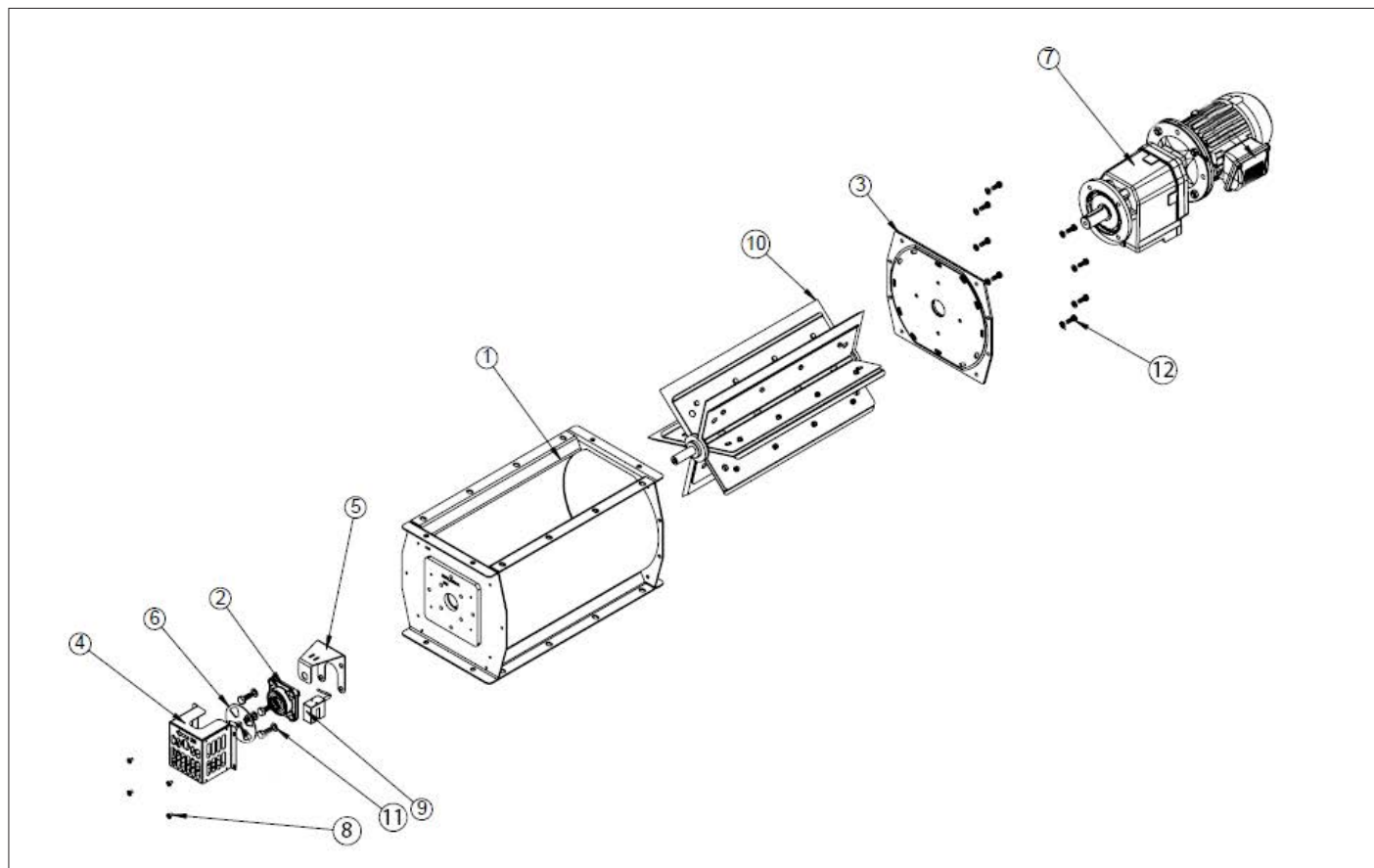
- Galvanized
- Stainless steel (AISI 304L or 316L)
- Other motor powers
- Other RAL colors
- Other blades



Model	Discharge volume (m³/h) ¹⁾	Rot. speed (rpm)	Mot. power (kW)	A (mm)	B (mm)	C (mm)	D (mm)	E (mm)	F (mm)	C modular (mm)	Weight (kg)
RVA1-NX-06	10	21	0.37	250	316	150	286	434	772	1 x 150	48
RVA2-NX-06	20	21	0.55	500	566	450	536	434	1129	3 x 150	63
RVA3-NX-06	32	21	0.55	750	816	600	786	434	1379	4 x 150	77
RVA4-NX-06	42	21	0.55	1000	1066	900	1036	434	1629	6 x 150	91
RVA5-NX-06	63	21	0.55	1500	1566	1350	1536	434	2129	9 x 150	119

¹⁾ Volume output at 50% degree of filling

RVA Rotary valves



Components list for rotary valve type RVA

Please only use original components to guarantee a worry free functioning of the rotary valves.

#	Part	Description
1	Body	ST37, powder coated RAL 5010
2	Bearing housing	Cast iron square- flanges housing
3	Cover	ST37, powder coated RAL 5010
4	Rotation disk cover	ST37, powder coated RAL 5010
5	Detector holder	Galvanized steel
6	Rotation disc	Galvanized steel
7	Motor and gear	0.37kW or 0.55kW
8	Bolts M5 x 10	Galvanized steel
9	Rotation detector	Two options (see below)
10	Rotor	6 rubber blades rotor supported by metal axle, powder coated, incl. felt rings
11	Bolts and Washers M8	Galvanized steel
12	Bolts, nuts and Washers M8	Galvanized steel



Position detector for rotary valve type RVA

Type	Housing	Output function	Output	System	Connection	Mounting	Sensing range
Housing Fork Shaped detector	16 x 20 x 1	NC (Normally closed)	DC NAMUR	Proximity Sensor	Cable	-	-
M18 Housing detector	M18 x 50	NC (Normally closed)	DC NAMUR	Proximity Sensor	Cable	Flush	From 4 to 6 mm

RVA-X ATEX Rotary valves



RVA-X ATEX rotary valves

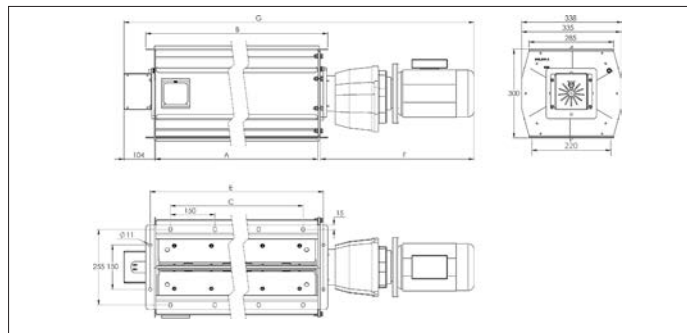
The RVA-X ATEX rotary valves are designed to discharge dust and other materials from filters and cyclones and treat volumes ranging from 9 to 35 m³/h. They are equipped with a visual rotation indicator.

These rotary valves are produced according to the following harmonized Directives/Standards :

- 2014/34/EC : ATEX Directive
- 2006/42/EC : Machine Directive
- 2014/35/EC : Low voltage Directive
- 2014/30/EC : Electromagnetic compatibility Directive

And are available in ATEX executions :

- RVA*-X1-06 : ATEX Zone 20 interior / Zone 21 exterior
- RVA*-X2-06 : ATEX Zone 20 interior / Zone 22 exterior
- RVA*-X3-06 : ATEX Zone 20 interior / Safe zone exterior



Material

St 37.2 black steel with primary paint and epoxy powder coating RAL 3020, temperature resistance : +80°C.

6 chamber rotor with rubber blades, Temperature range -20°C up to +60°C.

Type

3 mm rolled plates welded together, end plates bolted to the body.

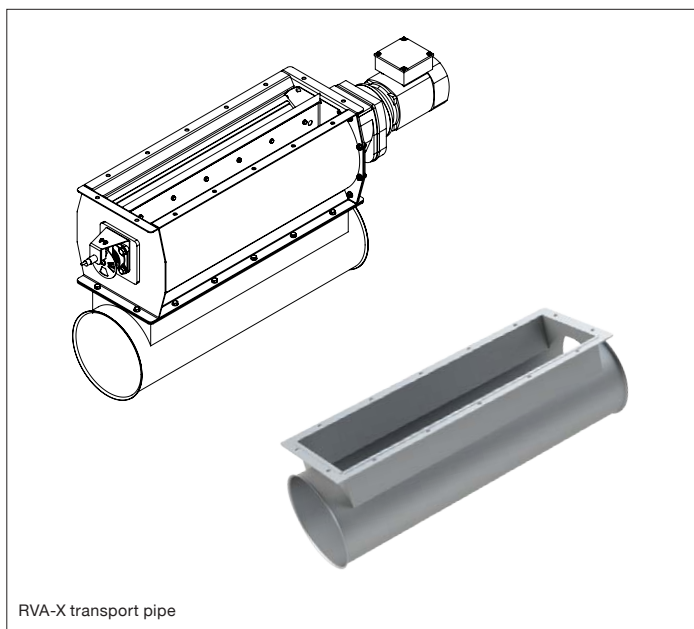
St1 (Kst 200 Bar m/s), MIE ≥ 13 mJ, MIT ≥ 430°C.

Options

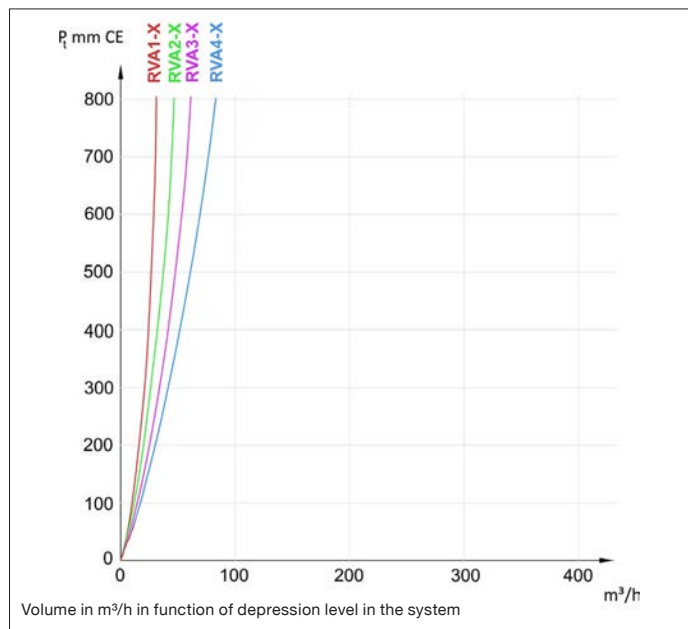
- Other RAL colors

Accessories

- Rotation detector
- Counter flanges
- Replacement rubber blades
- Transport and discharge pipes



RVA-X transport pipe

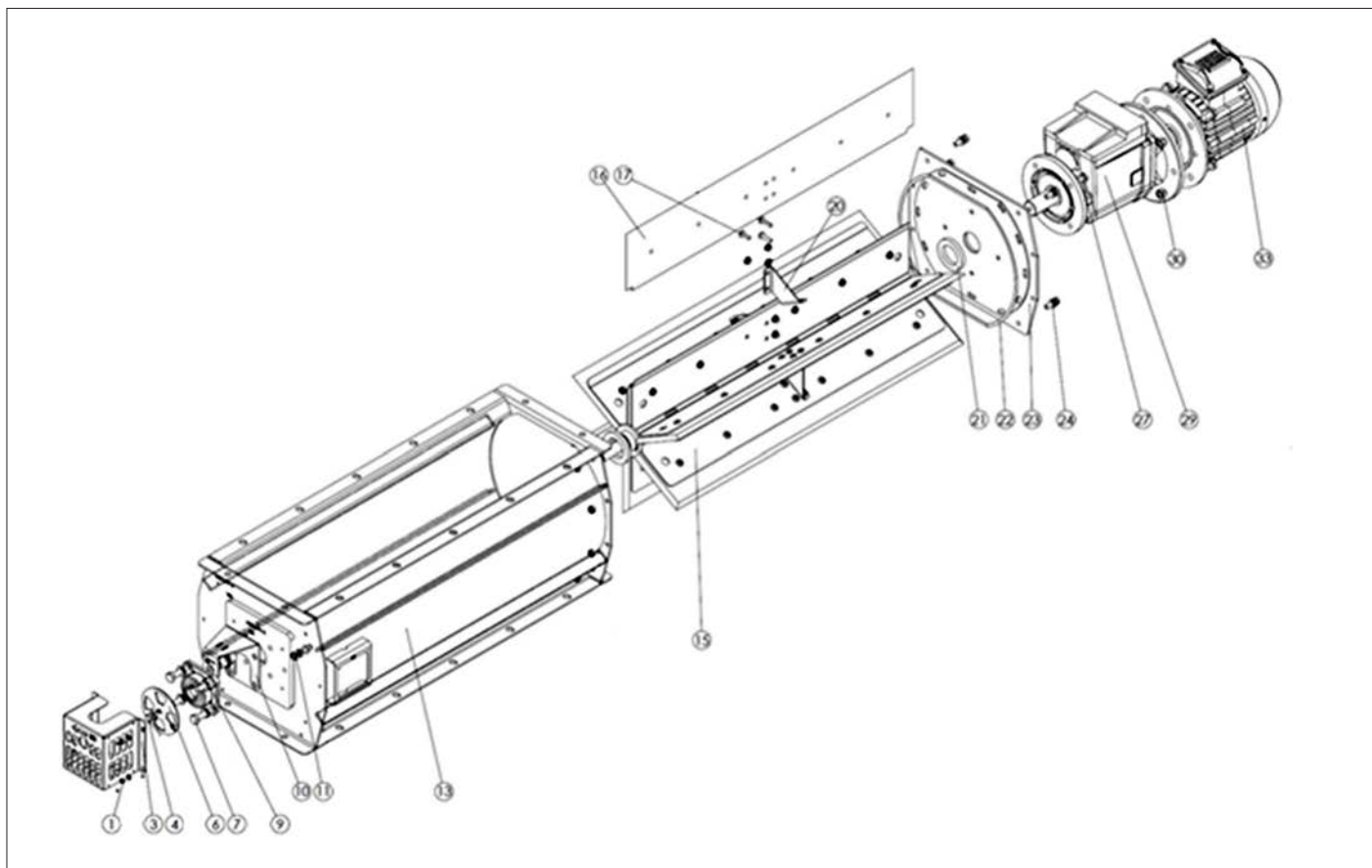


Model	Discharge volume (m³/h) ¹⁾	Rot. speed (rpm)	Mot. power (kW)	A (mm)	B (mm)	C (mm)	E (mm)	F (mm)	G (mm)	C modular (mm)	Weight (kg)
RVA1-Xi-06	9	19	0.37	250	316	150	286	418	782	1 x 150	48
RVA2-Xi-06	17	19	0.55	500	566	450	536	494	1108	3 x 150	74
RVA3-Xi-06	26	19	0.55	750	816	600	786	494	1359	4 x 150	91
RVA4-Xi-06	35	19	0.55	1000	1066	900	1036	494	1609	6 x 150	107

¹⁾ Volume output at 50% degree of filling

²⁾ 1, 2 or 3 according to ATEX marking on the rotary valve

RVA-X ATEX Rotary valves



Components list for ATEX rotary valve type RVA-X

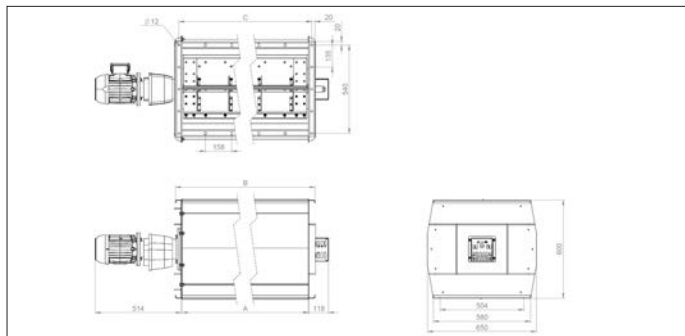
Please only use original components to guarantee a worry free functioning of the rotary valves.

#	Part	Description
1	Bolt set for rotation disc cover	Bolts and washers M5 (4 pieces)
3	Rotating disc cover	Steel cover powder coated in RAL 5010
4	Bolt set for rotation disc	Bolt and washer for rotation disc
6	Rotation disc	Rotation disc powder coated in RAL 3020
7	Bolt set for flanged bearing	Bolts and washers M10 (4 pieces)
9	Bearing	Flanged bearing
10	Sensor holder	Sensor holder
11	Bolts set for front cover plate	Bolts, nuts and washers M8 (8 pieces)
13	Rotary valve body	Steel casing powder coated in RAL 5010
15	Rotary valve rotor	Steel rotor
16	Rotor blades for RVA-X rotary valve	Set of 6 neoprene rotor blade
17	Bolt set for rotor	Bolts, nuts and washers M6
20	Rotor vane reinforcement	Set of 6 vane reinforcements
21	Felt ring set	Felt ring (2 pieces)
22	Butyl strip	Butyl strip (1m)
23	Rear cover plate	Steel rear cover powder coated in RAL 5010
24	Bolt set for rear cover plate	Bolts, nuts and washers M8 (8 pieces)
27	Bolt set for gear	Bolts, nuts and washers M8 (4 pieces)
29	Gearbox	Gearbox for rotary valve RVA-ATEX
30	Bolt set for motor	Bolts, nuts and washers M8 (4 pieces)
33	Motor	B5 motor for rotary valve RVA-ATEX

NCEB000002 Position detector accessory for ATEX rotary valve type RVA-X

Type	Housing	Output function	Output	System	Connection	Mounting	Sensing range
M18 Housing detector	M18 x 55	NC (Normally closed)	NAMUR	Proximity Sensor	Cable	Flush	8 mm

RVB Rotary valves



RVB rotary valves

The RVB rotary valves are designed to discharge dust and other materials from filters and cyclones and treat volumes ranging from 60 to 120 m³/h. They are equipped with a visual rotation indicator.

These rotary valves are produced according to the following harmonized directives/standards :

- 2006/42/EC ; Machine directive
- 2014/35/EC ; Low voltage directive
- 2014/30/EC ; Electromagnetic compatibility directive

Accessories

- Rotation detectors
- Counter flanges
- Replacement rubber blades
- Transport and discharge pipes

Material

St 37.2 black steel with primary paint and epoxy powder coating RAL 5010, temperature resistance : +80°C.

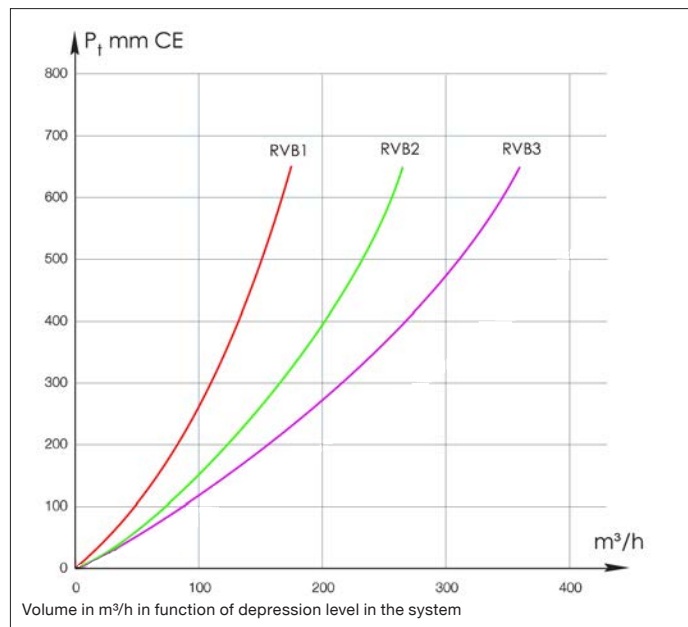
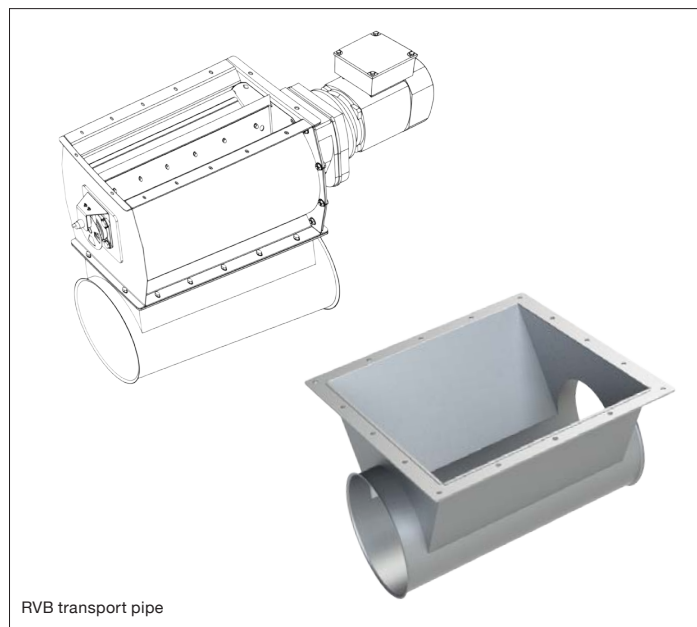
8 chamber rotor with rubber blades, temperature range -30°C up to +70°C.

Type

3 mm rolled plates welded together.
End plates bolted to the body.

Options

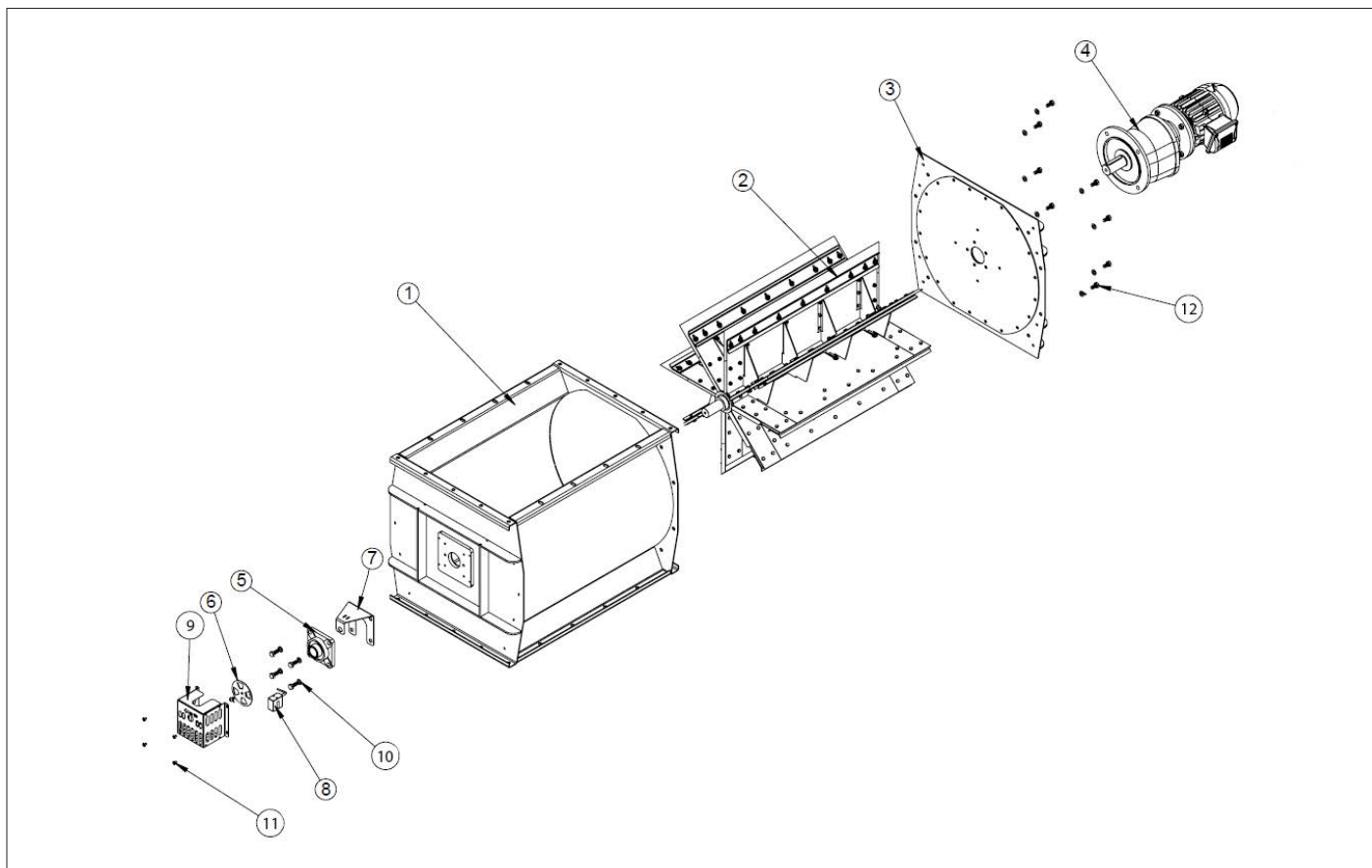
- Galvanized
- Stainless steel (AISI 304L or 316L)
- Other motor powers
- Other RAL colors
- Other blades



Model	Discharge volume (m³/h) ¹⁾	Rot. speed (rpm)	Mot. power (kW)	A (mm)	B (mm)	C modular (mm)	D (mm)	Weight (kg)
RVB1-NX-08	60	21	1.1	500	580	4 x 135	540	140
RVB2-NX-08	90	21	1.1	750	830	5 x 158	790	185
RVB3-NX-08	120	16	1.5	1000	1080	8 x 130	1040	260

¹⁾ Volume output at 50% degree of filling

RVB Rotary valves



Components list for rotary valve type RVB

Please only use original components to guarantee a worry free functioning of the rotary valves.

#	Part	Description
1	Body	ST37, powder coated RAL 5010
2	Rotor	8 rubber blades rotor supported by metal axle, powder coated, incl. felt rings
3	Cover	ST37, powder coated RAL 5010
4	Motor and gear	1.1 kW or 1.5 kW
5	Bearing housing	Cast iron square- flanges housing
6	Rotation disc	Galvanized steel
7	Detector holder	Galvanized steel
8	Rotation detector	Two options (see below)
9	Rotation disk cover	ST37, powder coated RAL 5010
10	Bolts and Washers M8	Galvanized steel
11	Bolts M5 x 10	Galvanized steel
12	Bolts, nuts and Washers M8	Galvanized steel



Position detector for rotary valve type RVB

Type	Housing	Output function	Output	System	Connection	Mounting	Sensing range
Housing Fork Shaped detector	16 x 20 x 1	NC (Normally closed)	NAMUR	Proximity Sensor	Cable	-	-
M18 Housing detector	M18 x 50	NC (Normally closed)	NAMUR	Proximity Sensor	Cable	Flush	From 4 to 6 mm

RVC ATEX Rotary valves



RVC ATEX rotary valves

The RVC ATEX rotary valves are designed to discharge dust and other materials from filters and cyclones and treat volumes ranging from 10 to 83 m³/h.

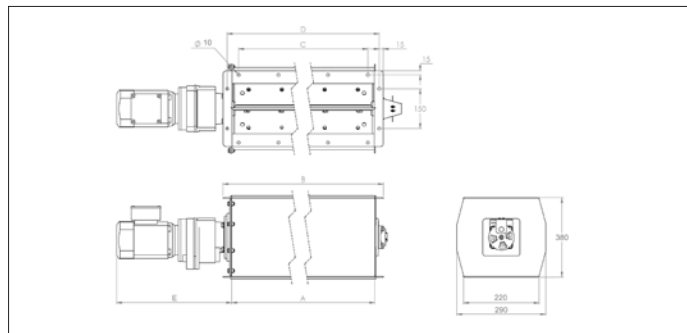
These rotary valves are produced according to the following harmonized directives/standards :

- 2006/42/EC ; Machine directive
- 2014/35/EC ; Low voltage directive
- 2014/30/EC ; Electromagnetic compatibility directive
- 2014/34/EC : ATEX directive

The RVC ATEX rotary valves are Eex IID St1 EN-15089 approved.

ATEX information

- ATEX directive : 2014/34/EU
- Certification : FTZU 05 ATEX 0184X
- $Pred_{max}$: 75 KPa
- KST_{max} : 20 MPa.m.s⁻¹



Material

St 37.2 black steel with primary paint and epoxy powder coated RAL 5002, temperature resistance : +80°C.

8 chamber rotor with rubber blades, temperature range -20°C up to +60°C.

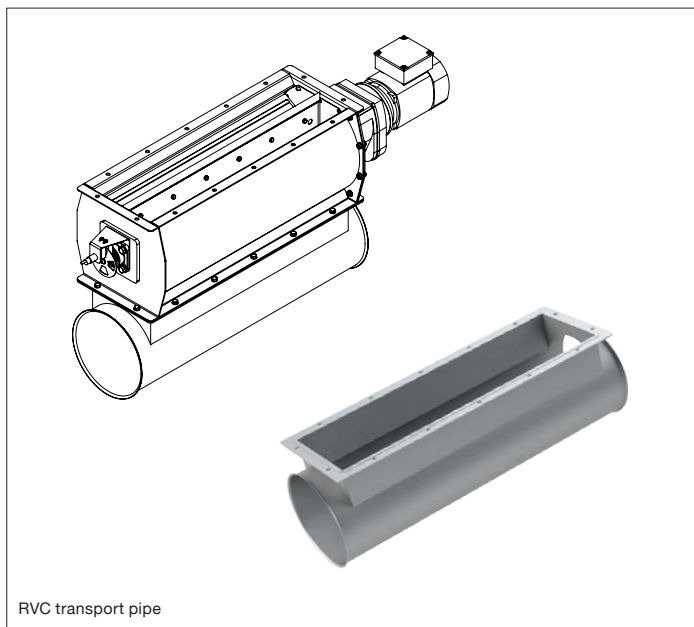
Type

3 mm rolled plates welded together.

End plates bolted to the body.

Accessories

- Visual rotation indicator
- Rotation detectors
- Counter flanges
- Replacement rubber blades
- Transport and discharge pipes

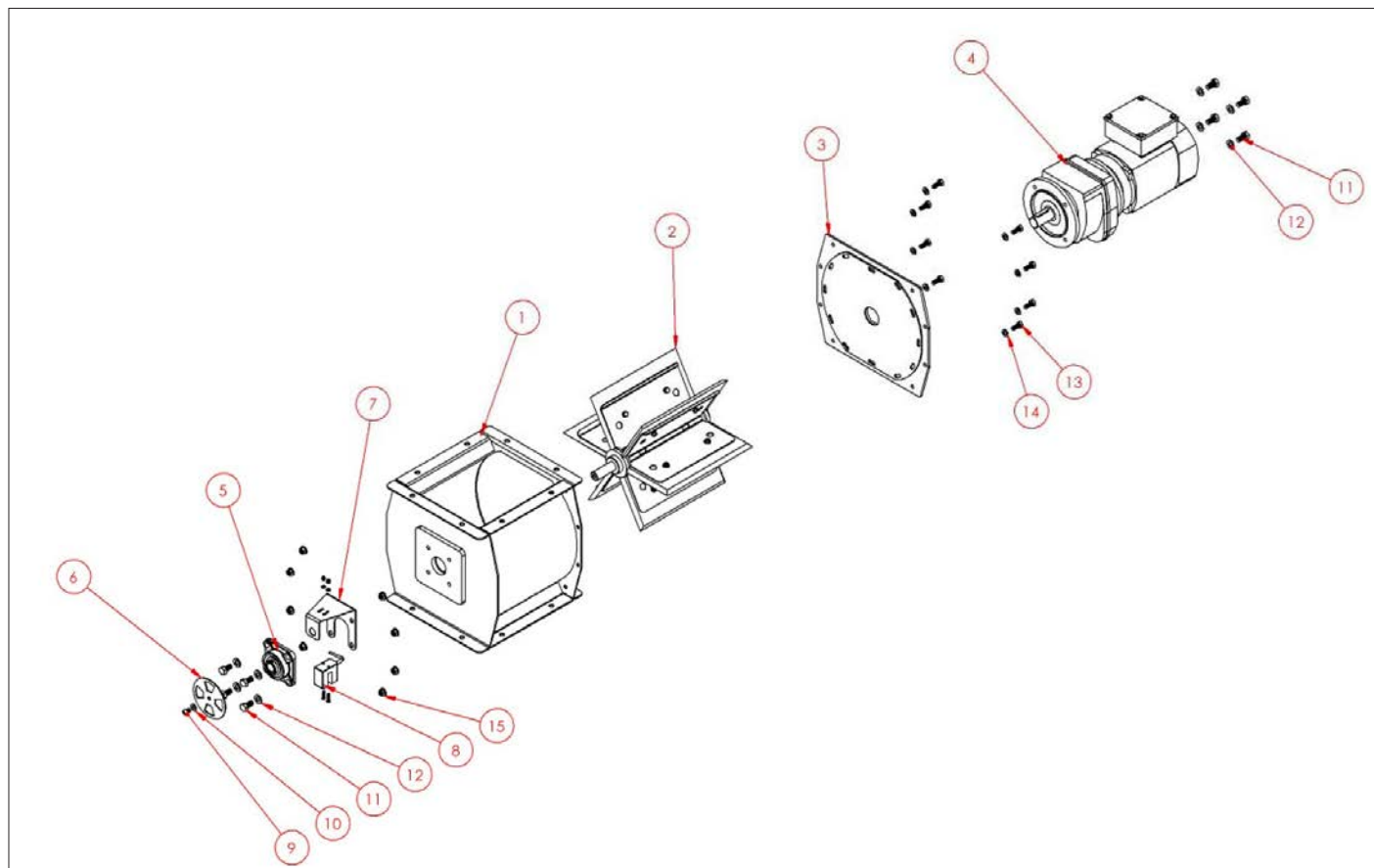


RVC transport pipe

Model	Discharge volume (m³/h) ¹⁾	Rot. speed (rpm)	Mot. power (kW)	A (mm)	B (mm)	C modular (mm)	D (mm)	E (mm)	Weight (kg)
RVC1-X3-08	15	38	0.55	220	290	150	260	603	68
RVC2-X3-08	40	32	0.55	670	740	5 x 150	710	603	96
RVC3-X3-08	55	32	0.55	925	995	6 x 150	965	603	110

¹⁾ Volume output at 50% degree of filling

RVC ATEX Rotary valves

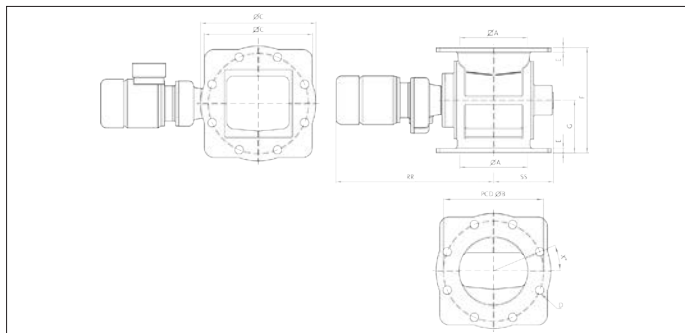
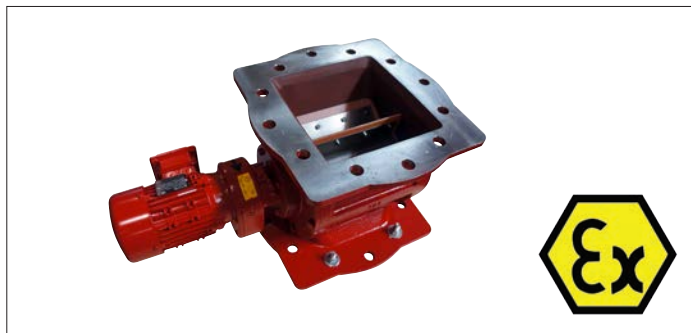


Components list for rotary valve type RVC

Please only use original components to guarantee a worry free functioning of the rotary valves.

#	Part	Description
1	Rubber blades	8 x rubber blades
2	Shaft seal ring	2 x seals
3	Blade supports	8 x ST37, powder coated RAL 5010
4	Shaft with blade supports	1 x ST37, powder coated RAL 5010
5	Dust seal pad	2 x felt pads for sealing
6	Support for dust pad	2 x support 0,63 mm
7	Support for dust support	2 x support 2 mm
8	Flanged bearing	2 x pieces
9	1/2 coupling	Half coupling rotary side
10	Bush coupling	Bush for coupling
11	1/2 coupling	Half coupling motor side
12	Coupling housing	ST37, powder coated RAL 5010
13	Gear	Cast-iron
14	Motor	Electric motor 0,37 or 0,55 kW
15	Rotary valve housing	ST37, powder coated RAL 5010
16	End plate	ST37, powder coated RAL 5010

RVD ATEX Rotary valves



RVD ATEX rotary valves

The RVD rotary valves is developed for applications under a filter. The universal flanges on the top and underside of the valve are drilled according to PN flange standards.

The top opening of the rotary valve is square allowing a good slope so that the product easily slides into the compartments of the rotor to be eliminated and thus reducing the risk of clogging. It is easily mounted on a round or square filter hopper outlet. On the other hand, the underside outlet of the valve is round to minimize air leakage. The underside flange can easily be fitted on a round or square flange of the connecting pipe.

The standard execution is designed to handle products with a max. temperature of 70 °C and a maximum pressure difference of 0,5 bar. the rotary valves are resistant to a explosion pressure surge in executions according to ATEX 2014/34/CE norm up to Group II Category 1D/-, or in flameproof execution category St.2.

These rotary valves also follow the following harmonized standards :

- EN 15089:2009
- EN 13463-1:2009
- EN 13463-5:2011

Material

GG25 cast-iron body powder coated RAL 3002.

St37.2 steel rotor.

90° shore polyurethane blades, temperature resistance : +80°C.

Type

With PN flange connection.

8 chamber rotor with 3 mm blades.

With NORD electrical drive (IP 55, class F).

Temperature range -30°C up to +70°C.

St2 (Kst 300 Bar m/s), MIE <1 mJ, Pred max. 3 Bar.

Options

- 6 chamber execution
- Galvanized
- Other motor powers
- Other RAL colors
- Other blades
- ATEX 1D/2GD version
- Rotation detectors

Advantages

- Minimal air leakage
- Choice of blades
- PN flange compatible

Model	capacity ¹⁾ (L/rev)	Discharge volume ²⁾ (m³/h)	Rotation (rpm)	Power (kW)	Max. pressure (Bar)	Max temp. (°C)	Weight (kg)
RVD1-X3-08	6	4.9	27	0.37	0.5	70	65
RVD2-X3-08	8.5	6.9	27	0.37	0.5	70	75
RVD3-X3-08	19	15.4	27	0.55	0.5	70	120

¹⁾ Volume output at 100% degree of filling

²⁾ Volume output at 50% degree of filling

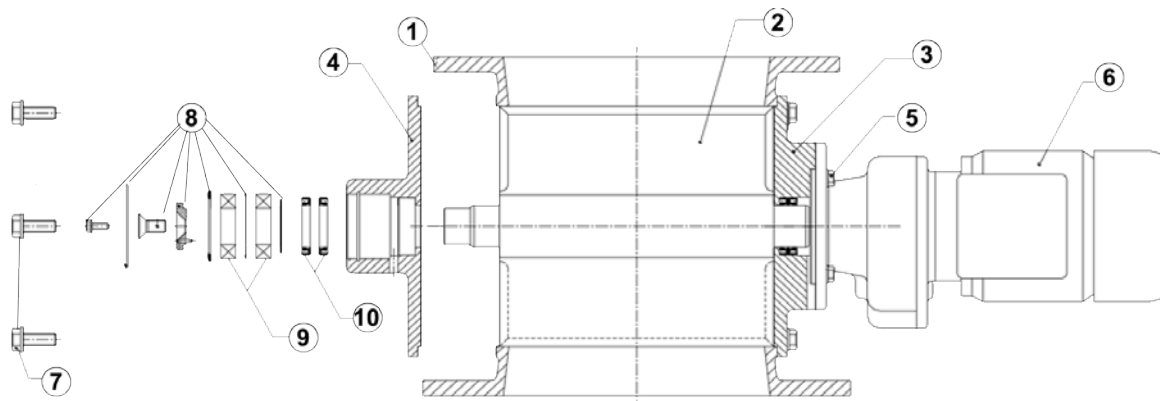
Dimensions :

Model	ØA (mm)	A (mm)	ØB (mm)	ØC (mm)	C (mm)	D (mm)	X° (mm)	E (mm)	F (mm)	G (mm)	RR (mm)	SS (mm)
RVD1-X3-08	200	200	295	340	320	8x Ø23	22.5	14	310	155	465	176
RVD2-X3-08	250	250	350	406	370	12x Ø23	30	15	325	162.5	485	196
RVD3-X3-08	300	300	400	483	445	12x Ø23	30	21	420	210	556	230

RVD ATEX Rotary valves

Components list for rotary valve type RVD

Please only use original components to guarantee a worry free functioning of the rotary valves.



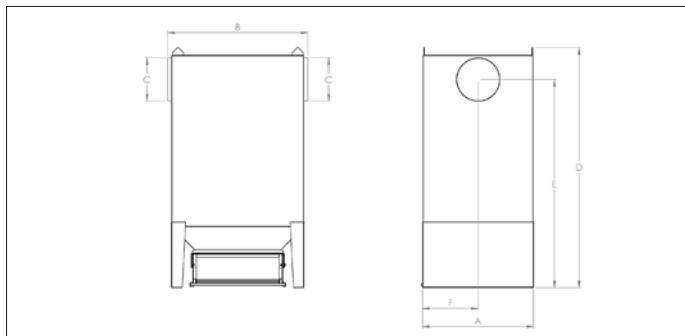
#	Part	Description
1	Body	GG25 cast-iron, powder coated RAL 3002
2	Rotor	St37.2 steel with 3 mm polyurethane blades
3	Cover	GG25 cast-iron, powder coated RAL 3002
4	Cover	GG25 cast-iron, powder coated RAL 3002
5	Bolts	steel
6	Geared motor	4P - 50/60 Hz - IP55
7	Bolts	steel
8	bearing cover and retaining rings	steel bearings and discs
9	Ball bearings	steel
10	Lip seals	steel

Position detector for rotary valve type RVD



Type	Housing	Output function	Output	System	Connection	Mounting	Sensing range
M18 Housing detector	M18 x 50	NO (Normally Open)	DC NPN	Proximity Sensor	Cable	Flush	From 4 to 6 mm

SFUV - spark separator



SFUV - Spark separator

Used as pre-separator before process air filtration that can contain sparks, which may be the case, when there is a relative short distance from the spark source, e.g. grinding, plasma or flame cutting, to the filter unit. In the pre-separator with spark arrest type SFUV possible sparks are extinguished by a labyrinth with water. It is placed on an even surface before the filter unit and connected to piping on inlet and outlet. It is filled with water before commissioning.

The water level can regularly be checked through water level indicator on container front but the SFUV is also available with automatic water filling. Container on wheels suspended in Quicklock system ensures user-friendly operation.

Air volumes : from 750 to 9.900 m³/h
Max pressure : up to 5.000 Pa

Material

St 37.2 - 2 mm black steel plate Surface powder enamelled RAL 5007/7011 structure, temperature resistance : +80°C.

Type

2 mm plates welded together.

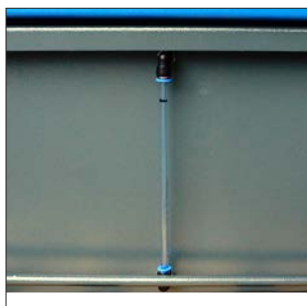
Options

- Other RAL colors
- Automatic water filling



Water bath

Water bath is easily removed and subsequently serviced.



Display

Water level indicator can be read during operation.



Automatic water filling

This is an option.



Inlet

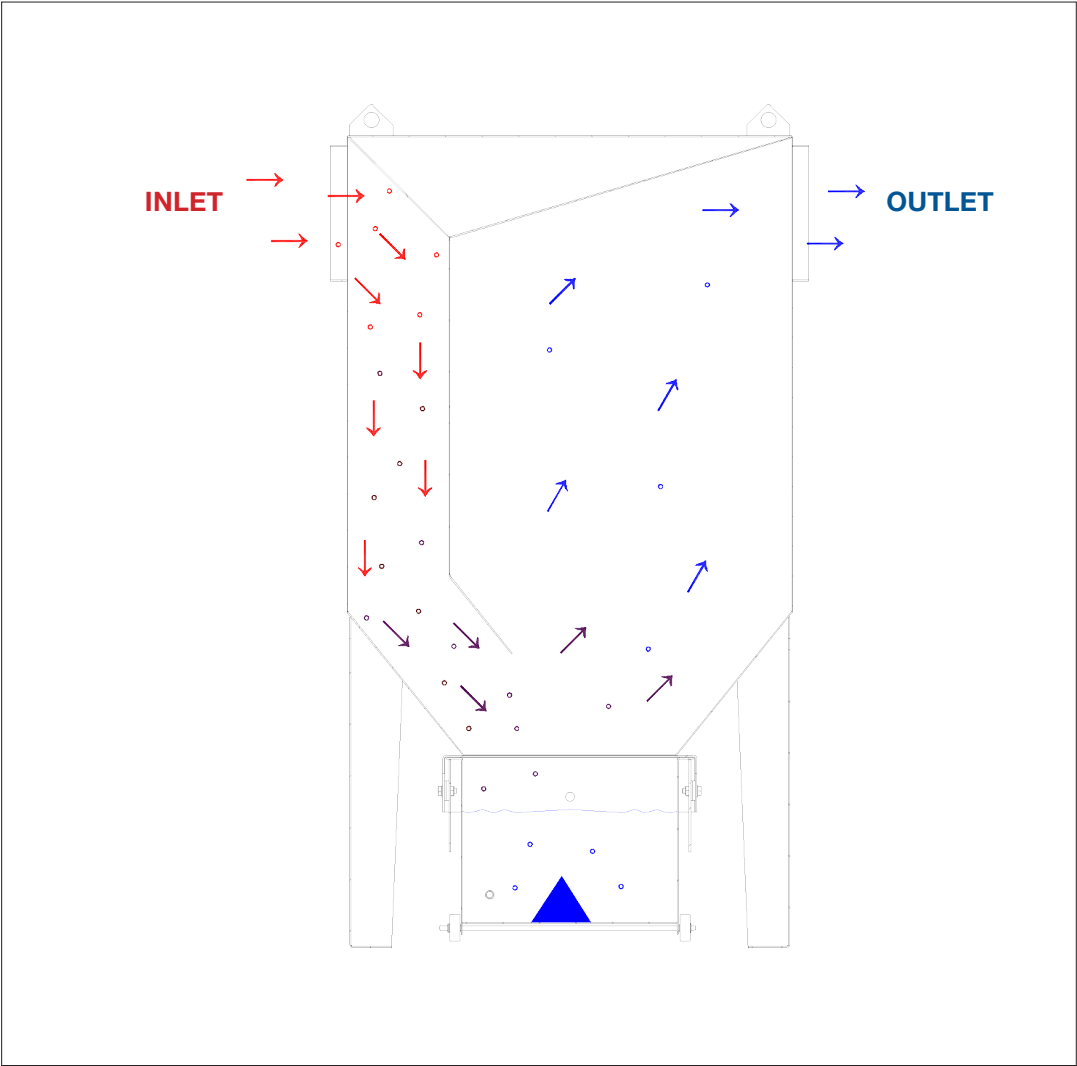
Placed in the top left side, after which the air is turned down.

SFUV - spark separator

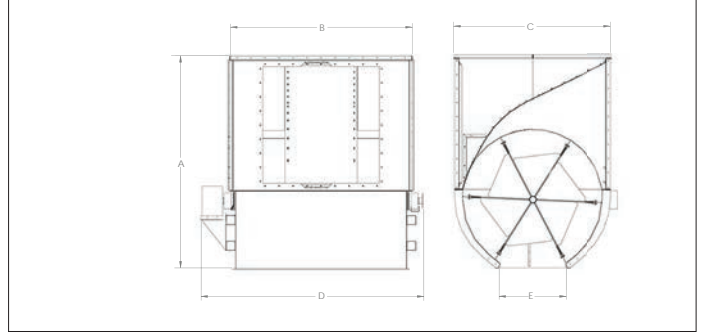
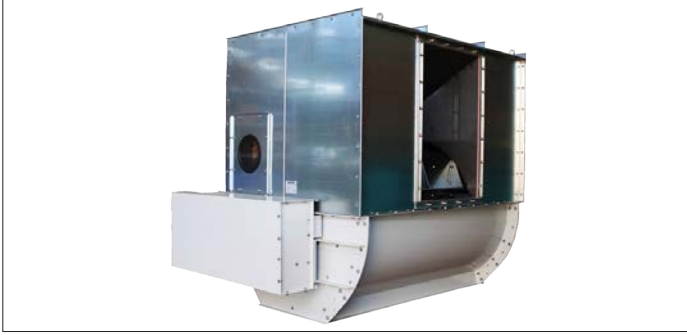
Dimensions SFUV unit:

Model	Min. air volume (m³/h)	Max. air volume (m³/h)	Delta P (Pa)	A (mm)	B (mm)	C (Ømm)	D (mm)	E (mm)	F (mm)
SFUV 160	750	1500	500-1000	506	564	160	1154	994	253
SFUV 200	1150	2300	500-1000	604	700	200	1332	1154	302
SFUV 250	1750	3500	500-1000	700	882	250	1557	1356	315
SFUV 315	2650	5300	500-1000	807	1020	315	1738	1511	403
SFUV 400	4500	9900	500-1000	1100	1260	400	2128	1852	550

Working principle of flow through SFUV unit:



RSEP - Rotating separator



RSEP rotating separator

The rotational separator replaces with success the big volume cyclones, or static separators in the paper and cardboard industry.

The coarse material is extracted to the separator and discharged pressureless to either a baler or a compactor. That results in an improved working environment because the dust is removed.

The design of the separator consists of a large diameter rotary feeder, coupled with a specially perforated plate designed to withstand intensive operation.

The separator comprises of a 6 blades rotor, equipped with wear resistant rubber that rotates slowly. This equipment has been designed to operate in demanding and intensive conditions and should not exceed 70 dB(A) at a distance of 1 meter when correctly installed.

Air volumes : from 8000 to 60000 m³/h
Max pressure : from 2500 up to 6.000 Pa

These separators are produced according to the following harmonized directives/standards :

- 2006/42/EC ; Machine directive
- 2014/35/EC ; Low voltage directive
- 2014/30/EC ; Electromagnetic compatibility directive

Material

St 37.2 - 2 mm black steel plate Surface powder enamelled RAL 5010 structure and rubber blades, temperature resistance : +80°C.
Galvanized perforated plate, holes of Ø3.5mm, for a permeability of 42%.

M18 inductive rotation detector included.

Type

2 mm plates welded together.

Options

- Stainless steel perforated grill (AISI 304)
- Weatherproof roof for exterior installation

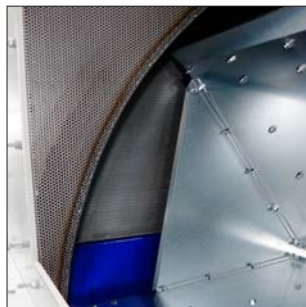
Advantages

- High reliability
- Efficient separation
- Low pressure loss and pressureless separation
- Reduced plant operating cost
- Improved working environment
- Compact unit with large separation capacity



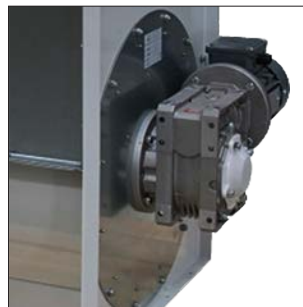
Sturdy construction

Construction is made to last and is weather resistant.



Inner grill

Inner grill on all side of the upper part for best airflow.



Easy replacements

Rubber blades can easily be replaced on some models.



Inspection door

Integrated inspection doors on both side to monitor proper functioning.

RSEP - Rotating separator

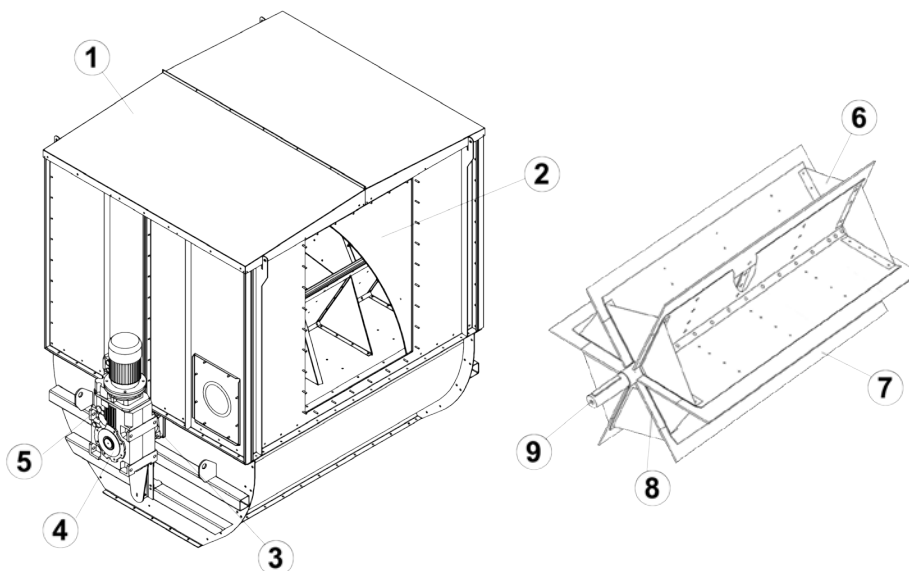
Model	Air volume (m³/h)	Capacity ¹⁾ (m³/h)	Power (kW)	Motor Rotation (rpm)	Gear reduction ²⁾	Rotor rotation (rpm) ²⁾	Max. pressure (Pa)	Max temp. (°C)
RSEP1-ST	8000	300	0.75	1500	1/65	22.5	3500	70
RSEP2-ST	22000	600	1.5	1500	1/100	15.5	2500	70
RSEP2-HP	22000	600	1.5	1500	1/100	15.5	6000	70
RSEP3-ST	35000	1000	2.2	1500	1/100	15.5	2500	70
RSEP3-HP	35000	1000	2.2	1500	1/100	15.5	6000	70
RSEP4-ST	50000	1400	3.0	1500	1/160	9.2	2500	70
RSEP4-HP	50000	1400	3.0	1500	1/160	9.2	6000	70
RSEP5-ST	60000	1680	3.0	1500	1/160	9.2	2500	70
RSEP5-HP	60000	1680	3.0	1500	1/160	9.2	6000	70

¹⁾ Volume output at 100% degree of filling

²⁾ data based on 50Hz functioning

Dimensions :

Model	A (mm)	B (mm)	C (mm)	D (mm)	E (mm)	Air IN (mm)	Air OUT (mm)	# of blades	Weight (kg)
RSEP1-ST	1000	985	670	925	385	500 x 250	500 x 500	6	200
RSEP2-ST	1690	925	1190	1450	600	900 x 350	900 x 700	6	530
RSEP2-HP	1690	925	1190	1450	600	900 x 350	900 x 700	6	540
RSEP3-ST	1690	1525	1190	2050	600	900 x 600	900 x 1200	6	700
RSEP3-HP	1690	1525	1190	2050	600	900 x 600	900 x 1200	6	725
RSEP4-ST	2360	1595	1733	2360	798	1250 x 700	1250 x 1250	6	1155
RSEP4-HP	2360	1595	1733	2360	798	1250 x 700	1250 x 1250	6	1180
RSEP5-ST	2353	1895	1733	2353	798	1250 x 900	1250 x 1550	6	1325
RSEP5-HP	2353	1895	1733	2353	798	1250 x 900	1250 x 1550	6	1350

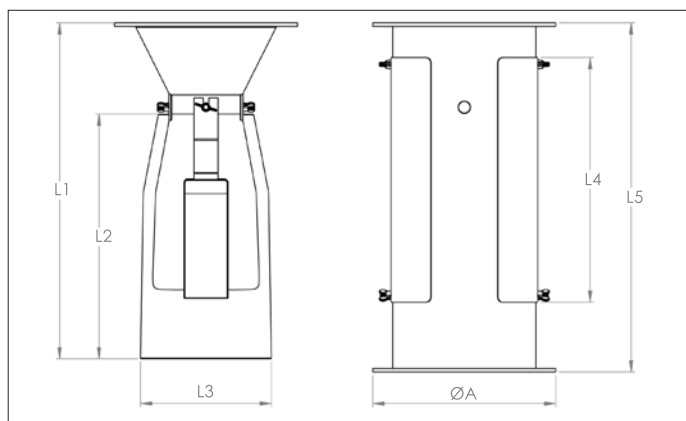
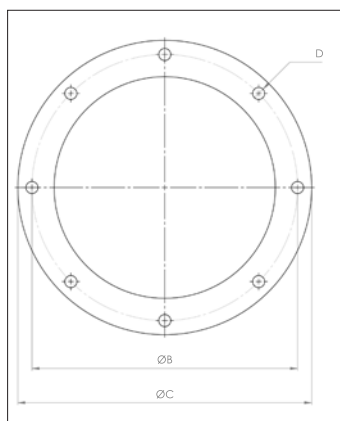


Spare parts list for rotating separator type RSEP

Please only use original spare parts to guarantee a worry free functioning of the rotating separator.

#	Part	Description
1	Separator housing	Upper part galvanized, lower part powder coated steel
2	Perforated grill	Galvanized sheet metal
3	Bearings	Flanged bearing for axle
4	Worm gear	Worm gear for B5 motor
5	Motor	B5 electric motor, IP 55
6	Rotor	Galvanized sheet metal
7	Rubber blade	Horizontal rubber blade, 1 per vane
8	Rubber blade	Vertical rubber blade, 2 per vane
9	Axle	Steel axle with shaft key
10	Rotation detector	M18 inductive sensor

XRUV Vacu-valves



XRUV Vacu-valves

The XRUV Vacu-valves are the most economical and worry-free way to discharge dust from bag filters or cyclones under negative pressure.

The fitted sleeves adjust to the desired vacuum, allowing for the continuous discharge of material while still maintaining an adequate seal.

This unique trickle valve requires no lubrication and no electrical power supply. The valves can be used in high temperature applications and can handle abrasive materials.

! Advantages

- Inexpensive
- No electricity needed

Typical industries that use these valves include:

foundry, mining, cement & sand, pharmaceutical, cereal & coffee, plastics, chemical and manufacturing.

Key features :

- Open construction models
- Carbon steel construction
- Neoprene duckbill sleeves
- Max. vacuum: 400 mm water gauge negative
- Max. temp 93°C (200 °F).

Options :

- Enclosed construction model
- Stainless steel models (AISI)
- Other duckbill sleeves (chemical & caustic resistant, high temperature, etc...)



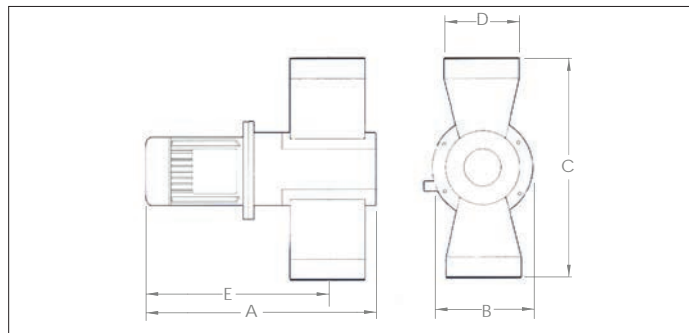
Carter option (open)



Carter option (closed)

Ø d	Code	L1 (mm)	L2 (mm)	L3 (mm)	L4 (mm)	L5 (mm)	ØA (mm)	ØB (mm)	ØC (mm)	D (# x Ø mm)	Weight (kg)
200	XRUV 200	495	365	195	356	508	253	235	253	12 x Ø 9	5.00
250	XRUV 250	560	460	247	356	575	303	285	303	12 x Ø 9	7.00

XCUTTER - Turbo-cutter



XCUTTER - Turbo-cutter

The turbo-cutter removes edges, cut-offs and trimmings with an integrated cutting- and suction technique which cuts the down to small pieces which can then be conveyed to the refuse container, compactor, combustion or to further preparation.

The turbo-cutter is developed especially for industries, which require a quick, effective and economic shredding of trimmings from one or more sources and works under vacuum, which means that dust and other contaminated particles are extracted together with the rest of the material.

The size of the cut off material depends on the amount of knives, the knife rotation speed and the speed of the airflow within the ducting.

Applications :

- Paper: Paper- and computer industry
- Cardboard: Packing industry
- Plastic foil: Plastic industry
- Packing: Packing industry
- Label, laminate: Printing works
- Fibers: Synthetic industry
- Textile: Textile industry

Material

Die-cast steel powder coated.
Hardened steel cutting knives.
Temperature resistance : +80°C.

Type

2 mm inlet cones bolted to housing.

Options

- Different sizes in- and outlets (Ø100 to Ø200)
- Set of knives

Other information

- 0,55 to 1,1 kW B5 flanged motor
- Speed : on request
- Elec. Supply : 3x380v, 50 Hz
- Starter : Manual/direct
- Current : 1,75 A
- Fuse rating : 10 amp
- Transmission : Direct through overload coupling
- Pressure loss : about 80mm wg at 1500 m³ air/h

Dimensions :

Model	# of Knives	Motor Power (kW)	A (mm)	B (mm)	C (mm)	ØD ¹⁾ (mm)	E (mm)	Weight (kg)
XCUTTER055-6P	3	0.55	483	200	450	100 to 200	350	32
XCUTTER075-4P	3	0.75	483	200	450	100 to 200	350	32
XCUTTER110-2P	3	1.1	483	200	450	100 to 200	350	32

¹⁾ Specify when ordering



Sturdy construction

Construction is made to last and is weather resistant.



Gearing

High grade metal gear and NSK bearings.



Easy adjustments

Fine tuning of cutting is easily done by exterior adjustment.



Knives

High grade steel knives insure long lasting working.