

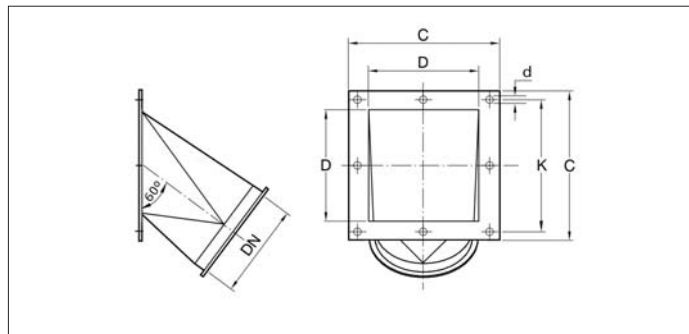
## BAEB Transition pieces at 60°



### BAEB Transition pieces at 60°

Full welded transition pieces designed for the transition between different ducting elements or machinery.

These transition pieces are suitable for the transport of waste materials such as dust and chips but also for the transport of grains and such.



### Material

2.00 mm black steel 1.0330 powder coated in RAL 7032.  
Electrostatically conductive and food-safe powder coating thickness of 30 to 60 µm.  
Temperature resistance up to +80°C.

### Type

Rolled and folded sheets with 6 mm edge for lock rings and flange.

### Options

- FDA and EU compliant food-grade quality
- hot-dipped galvanized or stainless steel execution
- wear resistant lining as of Ø150 (83° Shore)
- equipotential equalization
- other colors
- other diameters or dimensions
- other sheet thicknesses, depending on length and diameter
- other types of edges or connections

Ø d mm	Code	C mm	D mm	K mm	H mm	d mm	s mm	Weight kg
100	BAEB000049	160	120	140	190	6	2.00	0.90
120	BAEB000050	180	140	164	215	6	2.00	0.80
150	BAEB000051	220	180	202	260	6	2.00	1.20
175	BAEB000052	245	200	225	275	6	2.00	1.49
200	BAEB000053	290	250	270	265	6	2.00	1.60
250	BAEB000054	345	300	325	345	6	2.00	2.69
300	BAEB000055	395	350	375	475	6	2.00	4.40