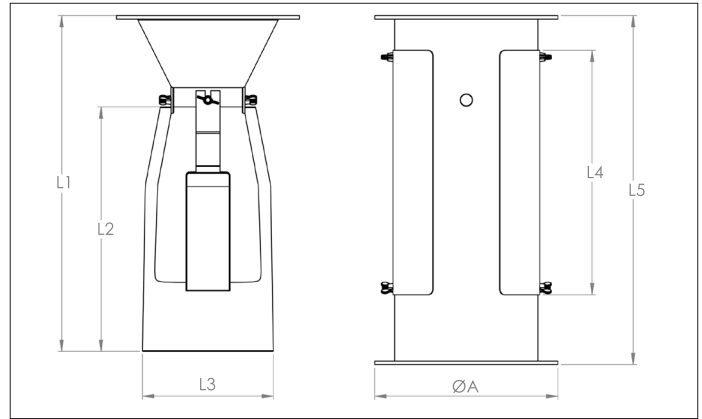
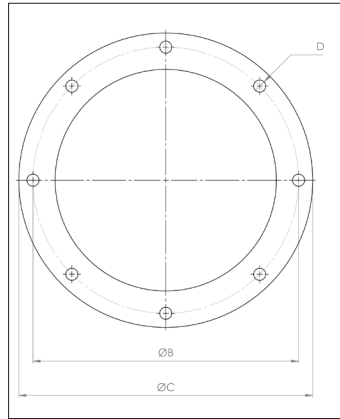


XRUV Vacu-valves



XRUV Vacu-valves

The XRUV Vacu-valves are the most economical and worry-free way to discharge dust from bag filters or cyclones under negative pressure.

The fitted sleeves adjust to the desired vacuum, allowing for the continuous discharge of material while still maintaining an adequate seal.

This unique trickle valve requires no lubrication and no electrical power supply. The valves can be used in high temperature applications and can handle abrasive materials.

Advantages

- Inexpensive
- No electricity needed

Typical industries that use these valves include:

foundry, mining, cement & sand, pharmaceutical, cereal & coffee , plastics, chemical and manufacturing.

Key features :

- Open construction models
- Carbon steel construction
- Neoprene duckbill sleeves
- Max. vacuum: 400 mm water gauge negative
- Max. temp 93°C (200 °F).

Options :

- Enclosed construction model
- Stainless steel models (AISI)
- Other duckbill sleeves (chemical & caustic resistant, high temperature, etc...)



Carter option (open)



Carter option (closed)

Ø d	Code	L1 (mm)	L2 (mm)	L3 (mm)	L4 (mm)	L5 (mm)	ØA (mm)	ØB (mm)	ØC (mm)	D (# x Ø mm)	Weight (kg)
200	XRUV 200	495	365	195	356	508	253	235	253	12 x Ø 9	5.00
250	XRUV 250	560	460	247	356	575	303	285	303	12 x Ø 9	7.00