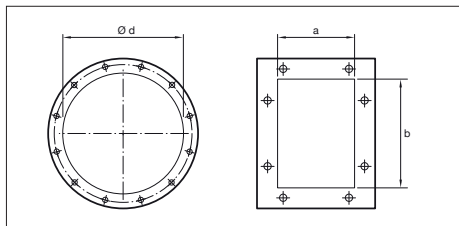
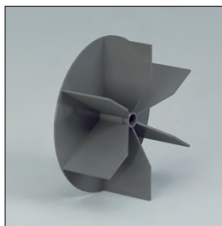
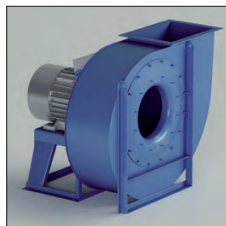


ZM - ZM/T



**ZM - ZM/T**

Direct and indirect driven centrifugal fans.  
Impeller with straight, open radial blades.

**Application**

For the transport of solid materials mixed with air, sawdust and various chips, also suitable for filaments.

**Application area**

Medium air volumes, medium pressures.

**Technical specifications:**

Air volume: 200 up to 65.000 m<sup>3</sup>/h  
Total pressure: 300 up to 500 daPa.

Model	Installed power (kW)	Axle height (mm)	Poles	Inlet $\varnothing d$ (mm)	Outlet dimensions a x b (mm)	Inspection door	Welding fan housing
ZM220/2	0.37	71	2	125	103 x 124	Optional	Optional
ZM250/2R	0.55	71	2	180	148 x 207	Optional	Optional
ZM250/2	0.75	80	2	180	148 x 207	Optional	Optional
ZM280/2R	1.1	80	2	200	166 x 231	Optional	Optional
ZM280/2	1.5	90	2	200	166 x 231	Optional	Optional
ZM310/2R	1.5	90	2	225	185 x 258	Optional	Optional
ZM310/2	2.2	90	2	225	185 x 258	Optional	Optional
ZM350/2R	3	100	2	250	205 x 288	Optional	Optional
ZM350/2	4	112	2	250	205 x 288	Optional	Optional
ZM400/2R	5.5	132	2	275	229 x 322	Optional	Optional
ZM400/2	7.5	132	2	275	229 x 322	Optional	Optional
ZM450/2R	9.2	132	2	325	256 x 361	Optional	Optional
ZM450/2	11	160	2	325	256 x 361	Optional	Optional
ZM500/2R	15	160	2	350	288 x 404	Optional	Optional
ZM500/2	22	180	2	350	288 x 404	Optional	Optional
ZM450/4	1.5	90	4	325	256 x 361	Optional	Optional
ZM500/4R	2.2	100	4	350	288 x 404	Optional	Optional
ZM500/4	3	100	4	350	288 x 404	Optional	Optional
ZM560/4R	4	112	4	400	322 x 453	Optional	Optional
ZM560/4	5.5	132	4	400	322 x 453	Optional	Optional
ZM630/4R	7.5	132	4	450	361 x 507	Optional	Optional
ZM630/4	11	160	4	450	361 x 507	Optional	Optional
ZM710/4R	11	160	4	500	404 x 569	Included	Included
ZM710/4	15	160	4	500	404 x 569	Included	Included
ZM800/4R	18.5	180	4	550	453 x 638	Included	Included
ZM800/4	30	200	4	550	453 x 638	Included	Included
ZM900/4R	37	225	4	630	507 x 715	Included	Included
ZM900/4	45	225	4	630	507 x 715	Included	Included
ZM1000/4R	55	250	4	710	569 x 801	Included	Included
ZM1000/4	75	280	4	710	569 x 801	Included	Included

ZM - ZM/T

-Size	- Max rpm
<b>CLASSE I</b>	
ZM220	5000
ZM250	5000
ZM280	4750
ZM310	4250
ZM350	4000
ZM400	3500
ZM450	3500
ZM500	3150
ZM560	2940
ZM630	2800
ZM710	2300
ZM800	2000
ZM900	1700
ZM1000	1550

- Values valid up to 60°C

• between	60°C	100°C	• and	100°C	4%
	100°C	150°C		150°C	10%
	150°C	200°C		200°C	16%
	200°C	250°C		250°C	23%
	250°C	300°C		300°C	30%
	300°C	350°C		350°C	37%
	350°C	400°C		400°C	45%
	400°C	450°C		450°C	54%
450°C	500°C	500°C	64%		

• degrade speed

