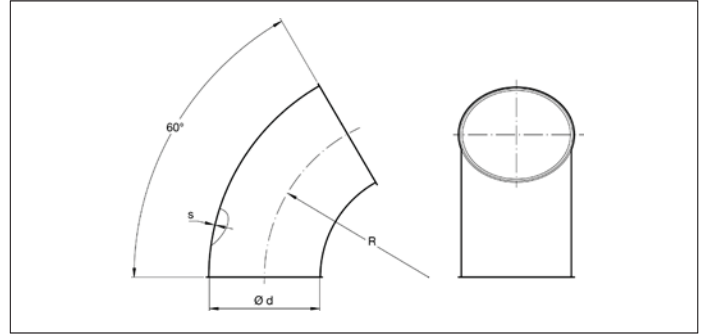
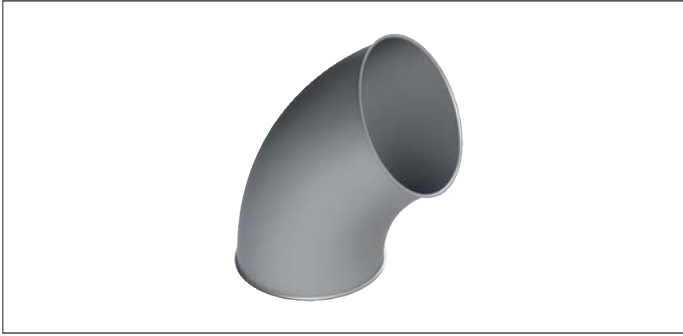


AABA Pressed bends 60° R=1.5D



Pressed bends 60° R=1.5D

The pressed bends are made of two preformed halves which are longitudinally spot-welded together for use in under-pressure and pressureless systems.

These bends are suitable for the transport of waste materials such as dust and chips but also for the transport of grains and such.

They are only produced in R=1.5D. If a situation requires other radiuses or diameters, please see the segmented bends in this section.

Material

Sendzimir galvanized DX51 DZ 275 MAC.

Type

Pressed sheets spot-welded together with 6 mm edges for lock rings.

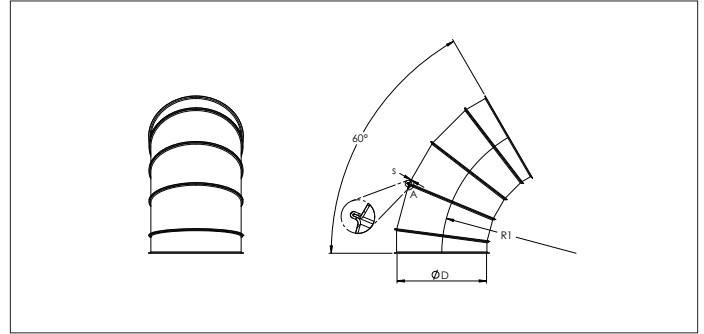
Options

- other types of edges or connections

Ø d mm	Code	R mm	s mm	Weight kg
80	AABA000029	120	0.88	0.32
100	AABA000030	150	0.88	0.53
120	AABA000031	180	0.88	0.72
125	AABA000143	187.5	1.00	0.75
140	AABA000032	210	0.88	0.93
150	AABA000033	225	1.00	1.05
160	AABA000034	240	1.00	1.20
180	AABA000035	270	1.00	1.55
200	AABA000036	300	1.00	1.85
225	AABA000037	337.5	1.00	2.35
250	AABA000038	375	1.00	2.95
275	AABA000039	412.5	1.00	3.55
300	AABA000040	450	1.00	4.20

FA.T01.ID.GALVA.2022.NS/V5.0.EN

AABA Segmented bends 60° R=1.5D



Segmented bends 60° R=1.5D

The segmented bends are composed of stitch-welded segments that are lock-formed together for use in under-pressure and pressureless systems.

As of diameter Ø 225 mm and larger, the intermediate segments are 15°.

These bends are suitable for the transport of waste materials such as dust and chips but also for the transport of grains and such.

They are produced in R=1.5D but other radiuses are available on request.

Material

Sendzimir galvanized DX51 DZ 275 MAC.

Type

Rolled sheet segments, stitch-welded, and lock-formed together with 6 mm edges for lock rings.

Options

- other diameters
- other radiuses
- other sheet thicknesses depending on diameter
- other types of edges or connections

Ø d mm	Code	Amount of segments	R mm	s mm	Weight kg
140	AABA400010	2 + 2	210	0.88	
150	AABA400011	2 + 2	225	0.88	
160	AABA400012	2 + 2	240	0.88	
180	AABA400013	2 + 2	270	0.88	
200	AABA400014	2 + 2	300	0.88	
225	AABA400015	2 + 2	337.5	0.88	
250	AABA400016	2 + 2	375	0.88	
275	AABA400017	2 + 2	412.5	0.88	
280	AABA000144	2 + 2	420	0.88	3.45
315	AABA000041	2 + 2	472.5	0.88	4.30
350	AABA000042	2 + 2	525	0.88	5.40
400	AABA000043	2 + 2	600	0.88	6.80
450	AABA000044	3 + 2	675	0.88	8.70
500	AABA000045	3 + 2	750	0.88	10.60
550	AABA000046	3 + 2	825	0.88	12.70
600	AABA000047	3 + 2	900	0.88	15.40
630	AABA000048	3 + 2	945	0.88	16.90
650	AABA000049	3 + 2	975	0.88	18.00
700	AABA000158	3 + 2	1050	1.00	20.80
750	AABA000159	3 + 2	1125	1.00	23.60
800	AABA000160	3 + 2	1200	1.00	24.80
850	AABA000161	3 + 2	1275	1.00	26.83
900	AABA000162	3 + 2	1350	1.00	29.96
950	AABA000163	3 + 2	1425	1.00	33.52
1000	AABA000164	3 + 2	1500	1.00	42.48