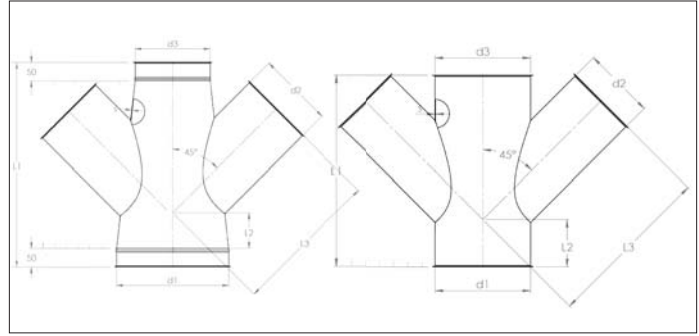


AACC Double branches at 45°



AACC Double branches at 45°

Double branches are longitudinally stitch-welded with a spot-welded side branch for use in overpressure, under-pressure and pressureless systems.

All our conical branches are produced so that all types of rings can be used to mount them.

The table below will indicate the total length L1 depending on the diameter ØD2 of the side branch.

! Side branch ØD2 can never be bigger than half the sum of ØD1 and D3.

Material

Sendzimir galvanized DX51 DZ 275 MAC.

Type

Rolled stitch-welded sheets with 6 mm edges for lock rings. Branch piece spot-welded on body with Tersotat for airtightness.

Options

- other diameters
- other sheet thicknesses depending on diameter and length
- other types of edges or connections

ØD1 mm	ØD2 mm	ØD3 mm	L1 mm	L2 mm	L3 mm	s mm
	80		300			0.88
	100		300			0.88
	120		350			0.88
	125		350			0.88
	140		350			0.88
	150		400			0.88
	160		400			0.88
	175		400			0.88
	180		400			0.88
	200		450			0.88
	220		500			0.88
	224		500			0.88
	225		500			0.88
	250		500			0.88
	275		600			0.88
	280		600			0.88
	300		600			0.88
	315		600			0.88
	350		700			0.88
	355		800			0.88
	400		800			0.88
	425		900			0.88
	450		950			0.88
	475		950			0.88
	500		950			0.88
	550		1.050			0.88
	560		1.050			0.88
	600		1.150			0.88
	630		1.150			0.88
	650		1.150			0.88
	700		1.300			0.88
	710		1.300			0.88
	750		1.300			0.88
	800		1.450			0.88
	850		1.450			0.88
	900		1.650			0.88
	950		1.700			0.88
	1.000		1.800			0.88

User choices from standard or modified diameters

User choices from standard or modified diameters

To be calculated with the CPQ tool or other dedicated tool

To be calculated with the CPQ tool or other dedicated tool