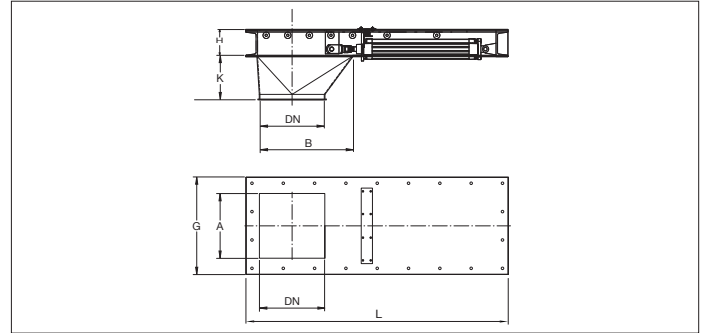


BADQ Pneumatic silo outlet gates



BADQ Pneumatic silo outlet gates

Full welded pneumatic silo outlet gates to discharge material from a cyclone, a silo, or such.

The outlet gate blade is secured in an open or closed position by means of the linear cylinder foreseen with limit switches and controlled by 5/2 monostable solenoid valve 24 V DC.

Suitable for applications with bulk and granular material with a relative humidity of 15% but not for installations in overpressure or pneumatic transport.

The gate must be installed horizontally and closes in case of power failure.

Material

2.00 mm black steel 1.0330 powder coated in RAL 7032.
Base frame 5.00 mm black steel 1.0330 powder coated in RAL 7032.
Electrostatically conductive and food-safe powder coating thickness of 30 to 60 µm.
Temperature resistance up to +80°C.

Type

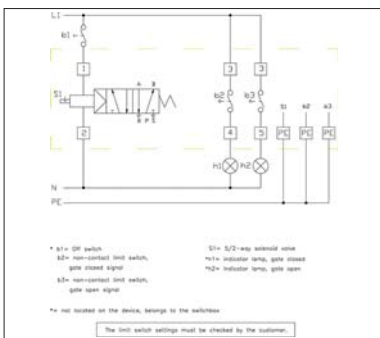
Welded and folded plates with or without 6 mm edges for lock rings.

Options

- FDA and EU compliant food-grade quality
- with seal
- other voltage : 220 V AC
- left and right hand versions
- hot-dipped galvanized or stainless steel execution
- wear resistant lining as of Ø150 (83° Shore)
- equipotential equalization or ATEX
- other colors
- other types of edges or connections

! Max. air pressure in solenoid valve : 8 Bar.

! Please specify LEFT or RIGHT orientation when ordering



Wiring diagram of 5/2 solenoid valve

* Weights are models with transition piece

Ø d mm	Code w. transition	Code w/o. transition	A mm	G mm	H mm	K mm	L mm	s mm	Weight kg*
150	BADQ000001	BADQ000010	333	300	126	175	850	2.00	49.00
175	BADQ000002	BADQ000011	333	325	126	175	850	2.00	54.00
200	BADQ000003	BADQ000012	383	350	126	175	950	2.00	58.00
250	BADQ000004	BADQ000013	433	400	126	224	1050	2.00	66.00
300	BADQ000005	BADQ000014	453	450	126	206	1080	2.00	72.00