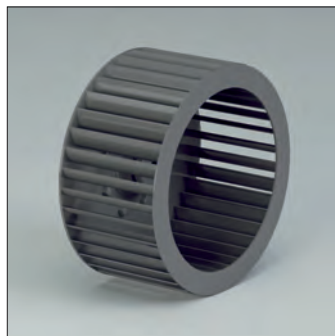
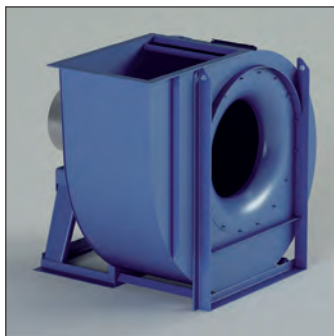


CA - CA/T

CA – CA/T

Direct and indirect driven centrifugal fans.
 Impeller with radial blades.

Technical specifications:

Air volume: 700 up to 80.000 m³/h
 Total pressure: 25 up to 285 daPa.

Application

For the transport of clean air and fumes.

Application area

Medium-high air volumes, low pressures.

Model	Installed power (kW)	Axle height mm	Poles	Inlet ø d mm	Outlet dimensions a x b mm	Inspection door	Welding fan housing
CA180/2	0.55	71	2	180	130 x 185	Optional	Optional
CA180/2	1.1	80	2	180	130 x 185	Optional	Optional
CA200/2	1.1	80	2	200	148 x 207	Optional	Optional
CA200/2	2.2	90	2	200	148 x 207	Optional	Optional
CA220/2	1.5	90	2	225	166 x 231	Optional	Optional
CA220/2	3	100	2	225	166 x 231	Optional	Optional
CA250/2	3	100	2	250	185 x 258	Optional	Optional
CA250/2	4	112	2	250	185 x 258	Optional	Optional
CA280/2	5.5	132	2	275	205 x 288	Optional	Optional
CA280/2	7.5	132	2	275	205 x 288	Optional	Optional
CA220/4	0.18	63	4	225	166 x 231	Optional	Optional
CA220/4	0.37	71	4	225	166 x 231	Optional	Optional
CA250/4	0.37	71	4	250	185 x 258	Optional	Optional
CA250/4	0.55	80	4	250	185 x 258	Optional	Optional
CA280/4	0.75	80	4	275	205 x 288	Optional	Optional
CA280/4	1.1	90	4	275	205 x 288	Optional	Optional
CA310/4	1.5	90	4	325	229 x 322	Optional	Optional
CA310/4	2.2	100	4	325	229 x 322	Optional	Optional
CA350/4	2.2	100	4	350	256 x 361	Optional	Optional
CA350/4	3	100	4	350	256 x 361	Optional	Optional
CA350/4	4	112	4	350	256 x 361	Optional	Optional
CA400/4	5.5	132	4	400	288 x 404	Optional	Optional
CA400/4	7.5	132	4	400	288 x 404	Optional	Optional
CA450/4	7.5	132	4	450	322 x 453	Optional	Optional
CA450/4	15	160	4	450	322 x 453	Optional	Optional
CA500/4	15	160	4	500	361 x 507	Optional	Optional
CA500/4	22	180	4	500	361 x 507	Optional	Optional
CA560/4	22	180	4	550	404 x 569	Optional	Optional
CA560/4	37	225	4	550	404 x 569	Optional	Optional
CA310/6	0.37	80	6	325	229 x 322	Optional	Optional
CA310/6	0.55	80	6	325	229 x 322	Optional	Optional
CA350/6	0.75	90	6	350	256 x 361	Optional	Optional
CA350/6	1.1	90	6	350	256 x 361	Optional	Optional
CA400/6	1.5	100	6	350	256 x 361	Optional	Optional
CA400/6	2.2	112	6	400	288 x 404	Optional	Optional
CA450/6	3	132	6	450	322 x 453	Optional	Optional
CA500/6	4	132	6	500	361 x 507	Optional	Optional
CA500/6	5.5	132	6	500	361 x 507	Optional	Optional
CA560/6	7.5	160	6	550	404 x 569	Optional	Optional
CA560/6	11	160	6	550	404 x 569	Optional	Optional
CA630/6	11	160	6	630	453 x 638	Optional	Included
CA630/6	18.5	200	6	630	453 x 638	Optional	Included
CA710/6	22	200	6	710	507 x 715	Included	Included
CA710/6	37	250	6	710	507 x 715	Included	Included
CA800/6	37	250	6	800	569 x 801	Included	Included
CA800/6	55	280	6	800	569 x 801	Included	Included
CA900/8	45	280	8	900	638 x 898	Included	Included
CA900/8	55	315	8	900	638 x 898	Included	Included
CA1000/8	55	315	8	1000	715 x 1007	Included	Included
CA1000/8	75	315	8	1000	715 x 1007	Included	Included

CA - CA/T

DELIVERY CHARACTERISTICS

•Load tolerance ±5%

• Fan syze	• Motor	P inst. [kW]	n	LpA [dB(A)]	Q [m³/h]																		
					720	790	865	935	1080	1225	1370	1440	1620	1800	2160	2520	2880	3240	3600	3960	4320	4680	
					pt[mmH ₂ O]																		
CA180/2	71	0,55	2855	56	81	83	86	88	93	95													
CA180/2	80	1,1	2855	59	81	83	86	88	93	95	95	94	89	81									
CA200/2	80	1,1	2855				97	98	103	108	112	114	117	119									
CA200/2	90	2,2	2920				101	102	107	112	116	118	121	123	118	105	90						
CA220/2	90	1,5	2920						120	123	127	129	135	140	147								
CA220/2	100	3	2950	66					122	126	130	132	137	142	150	152	147	136	122	112			
CA250/2	100	3	2950	65								156	159	162	171	181	188	193					
CA250/2	112	4	2950	68								156	159	162	171	181	188	193	194	185	177	167	
CA280/2	132	5,5	2950	68											216	216	218	220	226	231	235	241	
CA280/2	132	7,5	2950	71											216	216	218	220	226	231			
CA220/4	63	0,18	1350	47	28	29	30	31	32	32													
CA220/4	71	0,37	1370	52	29	30	31	32	33	33	30	29	26										
CA250/4	71	0,37	1370	51		35	36	37	38	39	41	42	43										
CA250/4	80	0,55	1395	54		37	38	39	40	41	43	44	45	44	40	35							
CA280/4	80	0,75	1395	55							49	49	50	51	54	55							
CA280/4	90	1,1	1415	58							50	50	51	52	55	56	56	55	52				
CA310/4	90	1,5	1420	58											62	66	69	73	76	80	81		
CA310/4	100	2,2	1420	61											62	66	69	73	76	80	81	80	78
CA350/4	100	2,2	1420	61												73	75	79	82	85	88	90	90
CA350/4	100	3	1440	64												75	77	81	84	87	90	92	92
CA350/4	112	4	1460	65												77	79	83	86	89	92	94	94
CA400/4	132	5,5	1460	66															116	118	121	123	125
CA400/4	132	7,5	1460	69															116	118	121	123	125
CA450/4	132	7,5	1460	65																		141	145
CA450/4	160	15	1470	73																			
CA500/4	160	15	1470	70																			
CA500/4	180	22	1470	74																			
CA560/4	180	22	1470	70																			
CA560/4	225	37	1470	76																			
CA310/6	80	0,37	935	50					27	27	28	29	30	31									
CA310/6	80	0,55	935	52					27	27	28	29	30	31	33	34	33	31					
CA350/6	90	0,75	935	55								32	33	34	36	37	39	39	38	37			
CA350/6	90	1,1	950	57								33	34	35	37	38	40	40	39	38	33	32	
CA400/6	100	1,5	950	57											49	51	52	54	55	57	58	59	
CA400/6	112	2,2	950	61											49	51	52	54	55	57	58	59	
CA450/6	132	3	960	61													61	64	66	68	69	71	
CA500/6	132	4	965	61																	81	82	83
CA500/6	132	5,5	965	64																	81	82	83
CA560/6	160	7,5	970	63																			
CA560/6	160	11	980	68																			
CA630/6	160	11	980	64																			
CA630/6	200	18,5	980	70																			
CA710/6	200	22	980	69																			
CA710/6	250	37	980	74																			
CA800/6	250	37	980	71																			
CA800/6	280	55	980	77																			
CA900/8	280	45	730	72																			
CA900/8	315	55	735	77																			
CA1000/8	315	55	735	73																			
CA1000/8	315	75	735	78																			

CA - CA/T

•Noise tolerance $\pm 4dB(A)$

Q [m³/h]																									
5400	6120	7200	7920	9000	10080	10800	12600	14400	16200	18000	19800	21600	25200	28800	32400	36000	39600	43200	46800	54000	61200	68400	75600	82800	90000
pt[mmH ₂ O]																									
245																									
241																									
71																									
89																									
91	86	72																							
93	88	74	65																						
130	133	136	137																						
130	133	136	137	134	127	121																			
152	157	165	169	173	176																				
154	159	167	171	175	178	178	176	169	159	145															
	188	193	196	202	207	211	220	226	231																
	188	193	196	202	207	211	220	226	231	231	228	219													
				207	214	217	226	232	238	242	246														
				207	214	217	226	232	238	242	246	247	242	230	209										
26																									
58																									
58	56	51	45																						
74	75	76	76	73																					
86	88	92	93	96																					
86	88	92	93	96	98	99																			
85	88	92	95	98	100	102	104	105	104																
89	92	96	99	102	104	106	108	109	108	106	100	92													
			111	115	120	123	130	136	141	144	145														
			111	115	120	123	130	136	141	144	145	143	132	115											
					140	146	152	158	165	171	176	182	183												
					140	146	152	158	165	171	176	182	183	179	168	154	137								
						180	185	190	196	208	218	226	231	233	233										
						180	185	190	196	208	218	226	231	233	231	226	205	177							
							131	134	142	149	156	160	163	164	162	152	135								
							133	136	144	151	158	162	165	166	164	154	137	118	102						
								160	167	174	181	187	193	198	204	204	199								
								160	167	174	181	187	193	198	204	204	199	188	172	155					

The A-weighted sound power level, LpA (Chap.13), is the value measured in test conditions at the point of maximum noise level.

CA - CA/T

SUCTION CHARACTERISTICS

Load tolerance ±5%

• Fan size	• Motor	P inst. [kW]	n	LpA [dB(A)]	Q [m ³ /h]																		
					720	790	865	935	1080	1225	1370	1440	1620	1800	2160	2520	2880	3240	3600	3960	4320	4680	
					pt[mmH ₂ O]																		
CA180/2	71	0,55	2855	56	80	81	84	86	90	92													
CA180/2	80	1,1	2855	59	80	81	84	86	90	92	91	90	84	75									
CA200/2	80	1,1	2855	64			96	97	101	106	110	112	114	116									
CA200/2	90	2,2	2920	64			100	100	105	110	114	115	118	120	114	100	84						
CA220/2	90	1,5	2920	59					118	121	125	127	132	137	144								
CA220/2	100	3	2950	66					120	124	128	130	134	139	146	148	142	131	116	106			
CA250/2	100	3	2950	65								153	156	159	167	177	183	187					
CA250/2	112	4	2950	68								153	156	159	167	177	183	187	188	179	170	160	
CA280/2	132	5,5	2950	68											211	211	212	214	219	224	227	232	
CA280/2	132	7,5	2950	71											211	211	212	214	219	224	227	232	
CA220/4	63	0,18	1350	47	28	29	30	31	31	31													
CA220/4	71	0,37	1370	52	29	30	31	32	32	32	29	28	25	22									
CA250/4	71	0,37	1370	51		35	36	37	38	38	40	41	42	41									
CA250/4	80	0,55	1395	54		37	38	39	40	40	42	43	44	43	39	33							
CA280/4	80	0,75	1395	55						48	48	48	49	50	53	54							
CA280/4	90	1,1	1415	58						48	49	49	50	51	54	55	54	53	49				
CA310/4	90	1,5	1420	58										61	65	68	71	74	78	78			
CA310/4	100	2,2	1420	61										61	65	68	71	74	78	78	77	75	
CA350/4	100	2,2	1420	61											72	74	78	80	83	86	88	87	
CA350/4	100	3	1440	64											74	76	80	82	85	88	90	89	
CA350/4	112	4	1460	65											76	78	82	84	87	90	91	91	
CA400/4	132	5,5	1460	66															114	116	119	120	122
CA400/4	132	7,5	1460	69															114	116	119	120	122
CA450/4	132	7,5	1460	65																		138	142
CA450/4	160	15	1470	73																		140	144
CA500/4	160	15	1470	70																			
CA500/4	180	22	1470	74																			
CA560/4	180	22	1470	70																			
CA560/4	225	37	1470	76																			
CA310/6	80	0,37	935	50					27	27	28	29	30	30	32								
CA310/6	80	0,55	935	52					27	27	28	29	30	30	32	33	32	29					
CA350/6	90	0,75	935	55								32	33	34	35	36	38	38	37	35			
CA350/6	90	1,1	950	57								33	34	35	36	37	39	39	38	36	31	30	
CA400/6	100	1,5	950	57											48	50	51	53	54	56	57	57	
CA400/6	112	2,2	950	61											48	50	51	53	54	56	57	57	
CA450/6	132	3	960	61													60	63	65	67	68	70	
CA500/6	132	4	965	61																	80	81	82
CA500/6	132	5,5	965	64																	80	81	82
CA560/6	160	7,5	970	63																			
CA560/6	160	11	980	68																			
CA630/6	160	11	980	64																			
CA630/6	200	18,5	980	70																			
CA710/6	200	22	980	69																			
CA710/6	250	37	980	74																			
CA800/6	250	37	980	71																			
CA800/6	280	55	980	77																			
CA900/8	280	45	730	72																			
CA900/8	315	55	735	77																			
CA1000/8	315	55	735	73																			
CA1000/8	315	75	735	78																			

CA - CA/T

•Noise tolerance $\pm 4dB(A)$

		Q [m ³ /h]																																							
		5400	6120	7200	7920	9000	10080	10800	12600	14400	16200	18000	19800	21600	25200	28800	32400	36000	39600	43200	46800	54000	61200	68400	75600	82800	90000														
		pt[mmH ₂ O]																																							
235	230																																								
86																																									
88	82	67																																							
90	84	69																																							
127	129	131	132																																						
127	129	131	132	128	120	113																																			
149	153	160	164	167	169																																				
151	155	162	166	169	171	171	167	158	146	130																															
	184	189	191	197	201	205	213	217	221																																
	184	189	191	197	201	205	213	217	221	220	216	206																													
				202	209	211	219	225	230	233	236	236																													
				202	209	211	219	225	230	233	236	236	230	216	193																										
23																																									
56																																									
56	53	48	41																																						
72	73	73	73																																						
85	86	90	91																																						
85	86	90	91	93	95	96																																			
84	87	91	93	96	98	100	101	101	100																																
88	91	94	97	100	102	103	105	105	104	101	94	85																													
			109	113	118	121	127	133	137	139	140																														
			109	113	118	121	127	133	137	139	140	137	125	107																											
							137	143	149	154	161	166	170	175	175																										
							137	143	149	154	161	166	170	175	175	170	158	143	124																						
											176	181	185	191	202	210	217	221	222																						
											176	181	185	191	202	210	217	221	222	219	213	190	159																		
												128	131	138	145	151	154	156	157	154	142	123																			
												130	133	140	147	153	156	158	159	156	144	125	122	85																	

The A-weighted sound power level, LpA (Chap.13), is the value measured in test conditions at the point of maximum noise level.

FA107.FM.2014.V2.0.UJK

CA - CA/T

• Size	• Max rpm		
	CLASSE I	CLASSE II	CLASSE III
CA180	3700*	4200	
CA200	3300*	3800	4250
CA220	3000*	3450	3800
CA250	2650*	3000	3550
CA280	2350*	2700	3100
CA310	2100*	2450	2750
CA350	2150	2400	2650
CA400	1900	2150	2350
CA450	1650	1900	2100
CA500		1700	1900
CA560		1500	1650
CA630		1300	1450
CA670		1250	1400
CA710		1200	1300
CA800		1000	1150
CA900		900	1050
CA1000		900	1000

• Values valid up to 60°C

• between	60°C	• and	100°C	• degrade speed	4%
	100°C		150°C		10%
	150°C		200°C		16%
	200°C		250°C		23%
	250°C		300°C		30%
	300°C		350°C		37%
	350°C		400°C		45%
	400°C		450°C		54%
	450°C		500°C		64%

• Seamed blades

pt [mmH₂O]

