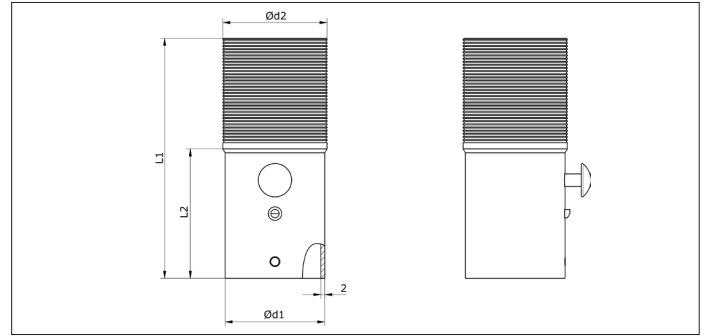
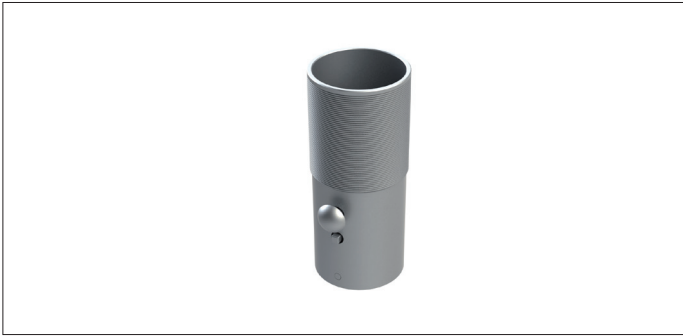


CAEB SL2 Hose connectors



CAEB SL2 Flexible connectors

For a quick and easy connection of the flexible hose into the leaf valves of an installation.

Can be combined with the CADDC RL and SL2 leaf valves.

A hose ring is recommended to hold the flexible hose in place.

Material

2 mm electro-galvanized blacksteel (10µm).

Type

Equipped with a release button.

Type	Code	d1 Ø mm	d2 Ø mm	L1 mm	L2 mm	Weight kg
38-38	CAEB000002	37.5	38	145	80	0.18
50-38	CAEB000003	47.5	38	145	80	0.23
50-45	CAEB000004	47.5	45	145	80	0.23
50-50	CAEB000005	47.5	50	145	80	0.23
63-50	CAEB000006	66.5	50	145	80	0.31
63-63	CAEB000007	66.5	63	145	80	0.31
76-50	CAEB000008	75.5	50	145	80	0.44
76-63	CAEB000009	75.5	63	145	80	0.44
76-76	CAEB000010	75.5	76	145	80	0.44