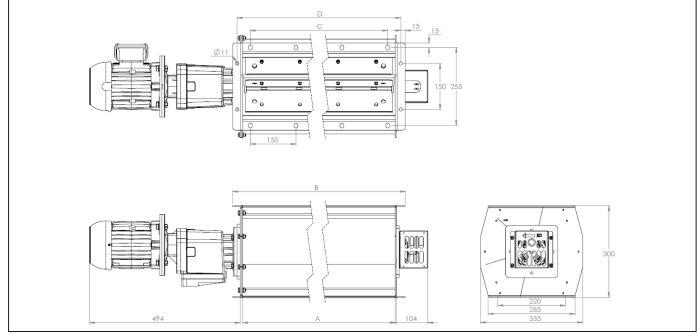
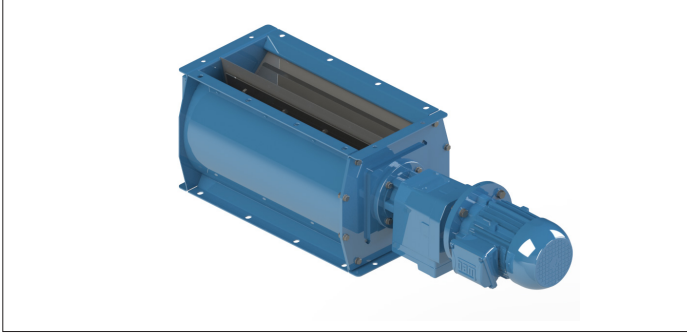


**RVA Rotary valves**



**RVA rotary valves**

The RVA rotary valves are designed to discharge dust and other materials from filters and cyclones and treat volumes ranging from 10 to 83 m<sup>3</sup>/h. They are equipped with a visual rotation indicator.

These rotary valves are produced according to the following harmonized directives/standards :

- 2006/42/EC ; Machine directive
- 2014/35/EC ; Low voltage directive
- 2014/30/EC ; Electromagnetic compatibility directive

**Accessories**

- Rotation detectors
- Counter flanges
- Replacement rubber blades
- Transport and discharge pipes

**Material**

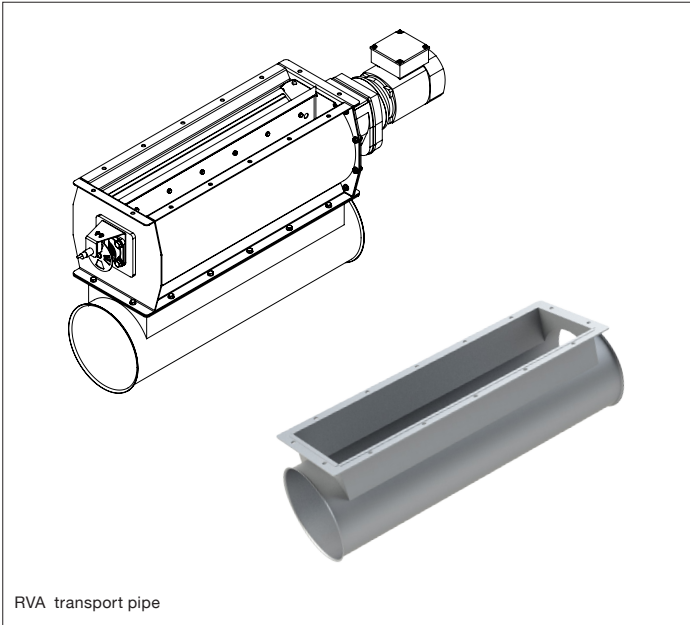
St 37.2 black steel with primary paint and epoxy powder coating RAL 5010.

**Type**

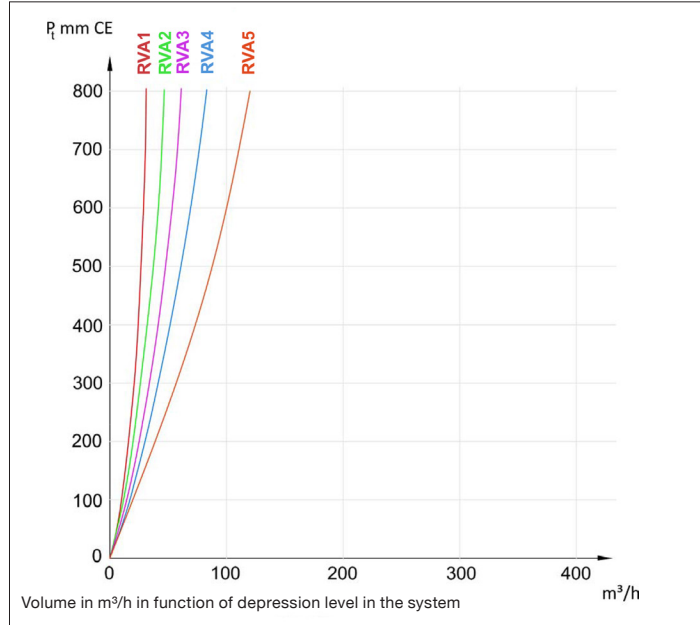
3 mm rolled plates welded together  
End plates bolted to the body  
6 chamber rotor with rubber blades

**Options**

- Galvanized
- Stainless steel (AISI 304L or 316L)
- Other motor powers
- Other RAL colors
- Other blades



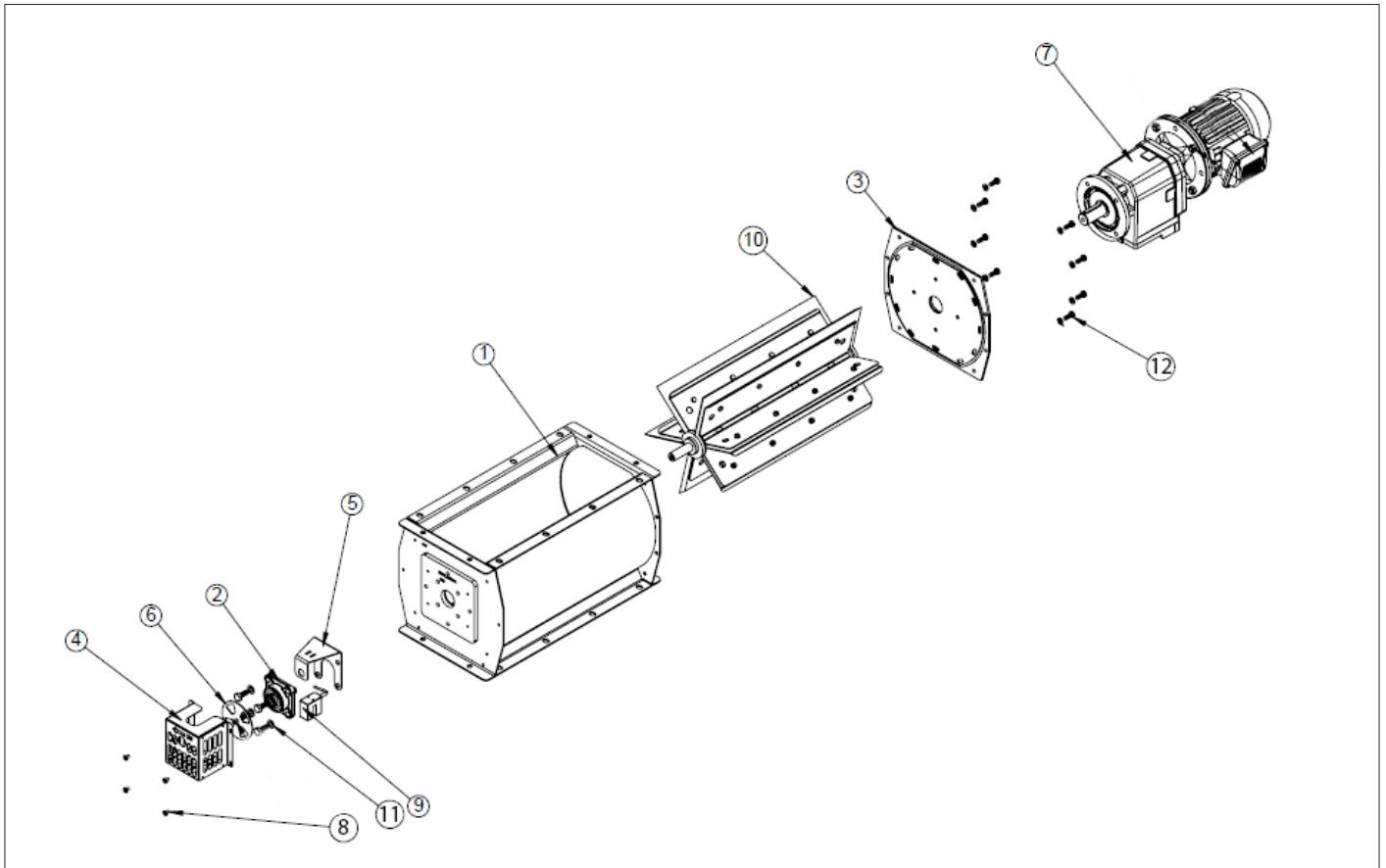
RVA transport pipe



Model	Discharge volume (m <sup>3</sup> /h) <sup>1)</sup>	Rot. speed (rpm)	Mot. power (kW)	A (mm)	B (mm)	C (mm)	D (mm)	E (mm)	F (mm)	C modular (mm)	Weight (kg)
RVA1-NX-06	10	21	0.37	250	316	150	286	434	772	1 x 150	48
RVA2-NX-06	20	21	0.55	500	566	450	536	434	1129	3 x 150	63
RVA3-NX-06	32	21	0.55	750	816	600	786	434	1379	4 x 150	77
RVA4-NX-06	42	21	0.55	1000	1066	900	1036	434	1629	6 x 150	91
RVA5-NX-06	63	21	0.55	1500	1566	1350	1536	434	2129	9 x 150	119

<sup>1)</sup> Volume output at 50% degree of filling

**RVA Rotary valves**



**Components list for rotary valve type RVA**

Please only use original components to guarantee a worry free functioning of the rotary valves.

#	Part	Description
1	Body	ST37, powder coated RAL 5010
2	Bearing housing	Cast iron square- flanges housing
3	Cover	ST37, powder coated RAL 5010
4	Rotation disk cover	ST37, powder coated RAL 5010
5	Detector holder	Galvanized steel
6	Rotation disc	Galvanized steel
7	Motor and gear	0.37kW or 0.55kW
8	Bolts M5 x 10	Galvanized steel
9	Rotation detector	Two options (see below)
10	Rotor	6 rubber blades rotor supported by metal axle, powder coated, incl. felt rings
11	Bolts and Washers M8	Galvanized steel
12	Bolts, nuts and Washers M8	Galvanized steel



**Position detector for rotary valve type RVA**

Type	Housing	Output function	Output	System	Connection	Mounting	Sensing range
Housing Fork Shaped detector	16 x 20 x 1	NO (Normally Open)	DC NPN	Proximity Sensor	Cable	-	-
M18 Housing detector	M18 x 50	NC (Normally closed)	DC NAMUR	Proximity Sensor	Cable	Flush	From 4 to 6 mm