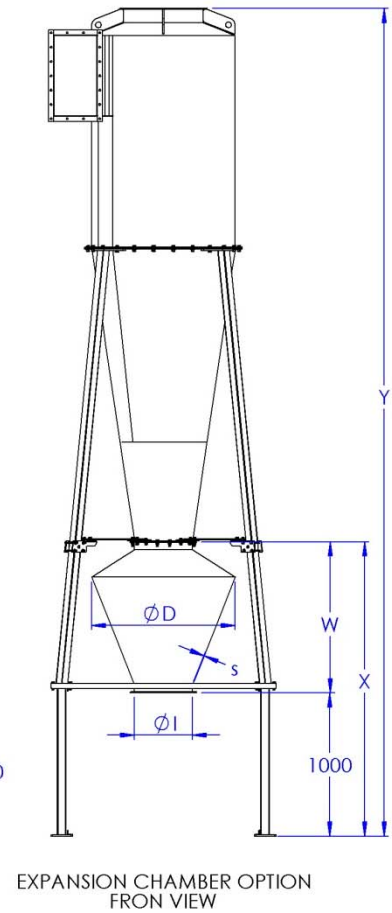
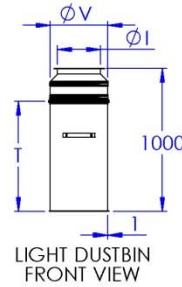
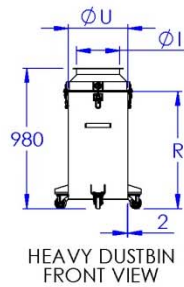
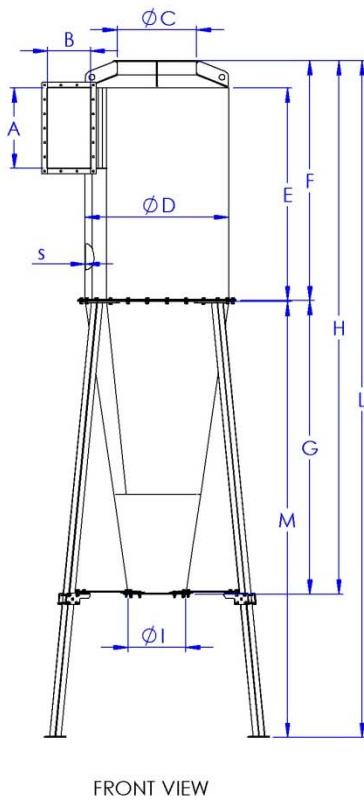
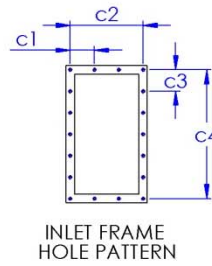
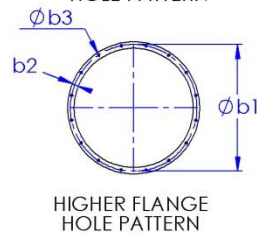
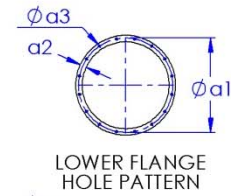
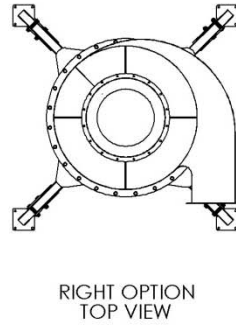
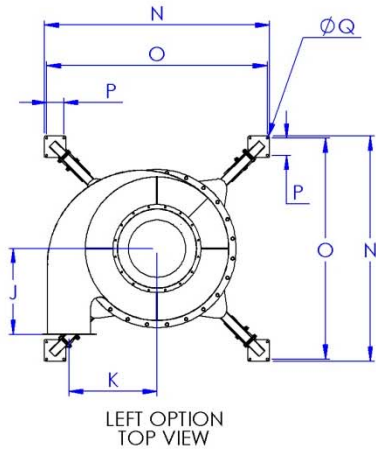




Cyclone FA

General information

1. Overall dimensions



Cyclone

Type	A mm	B mm	C mm	D mm	E mm	F mm	G mm	H mm	I mm	J mm	K mm	s mm
FA-020	230	100	∅ 225	∅ 399	570	645	820	1465	∅ 160	240	234	2
FA-035	285	125	∅ 250	∅ 499	710	770	1020	1790	∅ 200	300	290	2
FA-050	350	160	∅ 250	∅ 499	710	770	1020	1790	∅ 200	300	308	2
FA-065	445	200	∅ 400	∅ 709	998	1104	1414	2518	∅ 300	420	419	2
FA-100	560	300	∅ 550	∅ 1000	1490	1675	2050	3725	∅ 400	600	615	2
FA-130	750	400	∅ 698	∅ 1248	2000	2269	2820	5089	∅ 448	700	782	3
FA-160	1100	500	∅ 798	∅ 1598	2000	2270	3150	5420	∅ 548	900	1050	3
FA-180	1500	500	∅ 998	∅ 1798	2500	2800	3450	6250	∅ 628	950	1150	3

Legs, dustbin, expansion chamber

Type	L mm	M mm	N mm	O mm	P mm	Q mm	R mm	T mm	U mm	V mm	W mm	X mm	Y mm
FA-020	2465	1816	670	840	100	∅ 14	980	720	∅ 410	∅ 400	454	1454	2919
FA-035	2790	2012	981	951	100	∅ 14	980	720	∅ 410	∅ 400	554	1554	3344
FA-050	2790	2012	981	951	100	∅ 14	980	720	∅ 410	∅ 400	554	1554	3344
FA-065	3518	2414	1214	1184	100	∅ 14	980	720	∅ 410	∅ 400	764	1764	4282
FA-100	4725	3042	1573	1543	120	∅ 14	980	720	∅ 410	∅ 400	1054	2054	5779
FA-130	6089	3810	1955	1915	140	∅ 14	980	720	∅ 410	∅ 400	1304	2304	7393
FA-160	6420	4140	2258	2218	140	∅ 14	980	720	∅ 410	∅ 400	1654	2654	8074
FA-180	7250	4440	2501	2461	170	∅ 14	980	720	∅ 410	∅ 400	1854	2854	9104

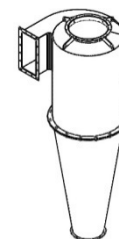
Flanges

Type	a1 mm	a2 mm	a3 mm	b1 mm	b2 mm	b3 mm	c1 mm	c2 mm	c3 mm	c4 mm	c5 mm
FA-020	∅ 215	25	∅ 9 (x8)	∅ 280	25	∅ 9 (x12)	70	140 (2x 70)	90	270 (3x 90)	∅ 13
FA-035	∅ 255	25	∅ 9 (x12)	∅ 305	25	∅ 9 (x12)	82.5	165 (2x 82.5)	108	325 (3x 108)	∅ 13
FA-050	∅ 255	25	∅ 9 (x12)	∅ 305	25	∅ 9 (x12)	100	200 (2x 100)	97.5	390 (4x 97.5)	∅ 13
FA-065	∅ 336	25	∅ 9 (x12)	∅ 439	30	∅ 11 (x16)	80	240 (3x 80)	97	485 (5x 97)	∅ 13
FA-100	∅ 465	30	∅ 11 (x16)	∅ 615	30	∅ 11 (x16)	113	340 (3x 113)	100	600 (6x 100)	∅ 13
FA-130	∅ 515	30	∅ 11 (x16)	∅ 785	40	∅ 11 (x24)	110	440 (4x 110)	99	790 (8x 99)	∅ 13
FA-160	∅ 615	30	∅ 11 (x16)	∅ 885	40	∅ 11 (x24)	108	540 (5x 108)	104	1140 (11x 104)	∅ 13
FA-180	∅ 695	30	∅ 11 (x24)	∅ 1085	40	∅ 11 (x24)	108	540 (5x 108)	103	1540 (15x 103)	∅ 13

2. Technical datasheet

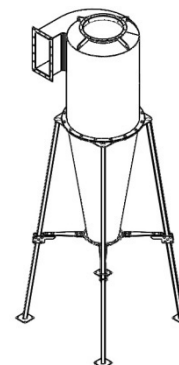
Cyclone FA

Type	Total volume m ³	Total mass kg	Higher cone mass kg	Lower cone mass kg
FA-020	0.13	40	25	15
FA-035	0.25	57	35	23
FA-050	0.25	58	36	23
FA-065	0.7	113	70	43
FA-100	2.08	226	143	83
FA-130	4.3	538	339	199
FA-160	7.3	754	475	278
FA-180	10.95	1025	682	342



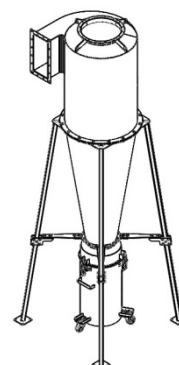
Cyclone FA with legs

Type	Total volume m ³	Total mass kg	Legs mass kg
FA-020	0.13	78	37
FA-035	0.25	99	41
FA-050	0.25	100	41
FA-065	0.7	162	49
FA-100	2.08	326	100
FA-130	4.3	692	154
FA-160	7.3	922	168
FA-180	10.95	1301	276



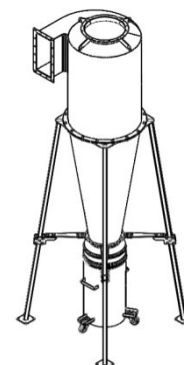
Cyclone FA with legs and heavy dustbin

Type	Total mass kg	Dustbin mass (Heavy) kg	Dustbin volume m ³
FA-020	111	34	0.1
FA-035	132	34	0.1
FA-050	133	34	0.1
FA-065	195	34	0.1
FA-100	360	34	0.1
FA-130	747	34	0.1
FA-160	977	34	0.1
FA-180	1356	34	0.1

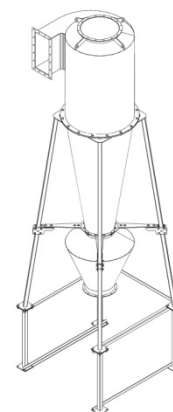


Cyclone FA with legs and light dustbin

Type	Total mass kg	Dustbin mass (light) kg	Dustbin volume m ³
FA-020	91	13	0.1
FA-035	112	13	0.1
FA-050	113	13	0.1
FA-065	175	13	0.1
FA-100	339	13	0.1
FA-130	705	13	0.1
FA-160	935	13	0.1
FA-180	1315	13	0.1


Cyclone FA with legs and expansion chamber

Type	Total mass kg	Expansion chamber mass kg	Expansion chamber volume m ³
FA-020	101	8	0.02
FA-035	128	12	0.05
FA-050	129	12	0.05
FA-065	210	24	0.15
FA-100	421	46	0.4
FA-130	875	101	0.75
FA-160	1231	164	1.54
FA-180	1724	206	2.22



Pressure loss in FA cyclones

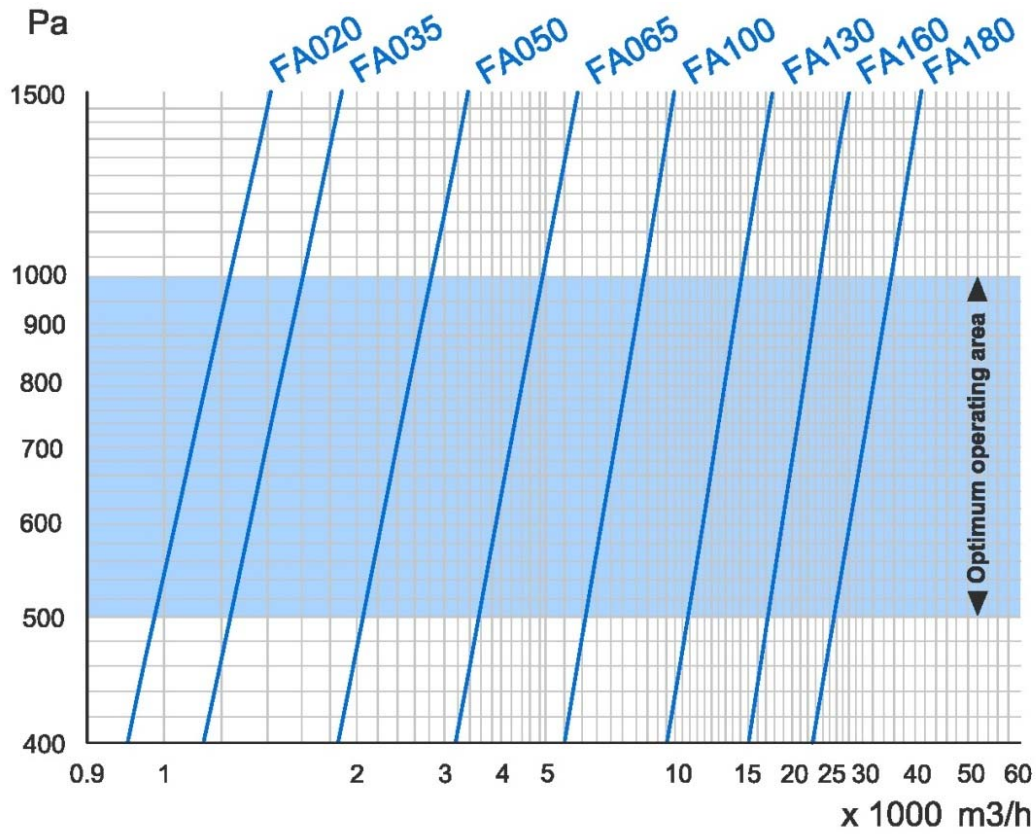


Diagram stating the pressure loss in FA cyclones at a given air volume.

3. Spare parts

For spare parts please contact Formula Air Group.

Formula Air

The Netherlands

Bossheweg 36
SX 5741 Beek en Donk
The Netherlands
Tel: +31 (0) 492 45 15 45
Fax: +31 (0) 492 45 15 99

info-nl@formula-air.com
[view Google Map](#)

Formula Air

Belgium

Rue des Dizeaux 4
1360 Perwez
Belgium
Tel: +32 (0) 81 23 45 71
Fax: +32 (0) 81 23 45 79

info-be@formula-air.com
[view Google Map](#)

Formula Air

Baltic

Televizorių G.20
LT-78137 Šiauliai
Lithuania
Tel: +370 41 54 04 82
Fax: +370 41 54 05 50

info-lt@formula-air.com
[view Google Map](#)

Formula Air

France

Zac de la Carrière Doree
BP 105, 59310 Orchies
France
Tel: +33 (0) 320 61 20 40
Fax: +33 (0) 320 61 20 45

info-fr-nord@formula-air.com
[view Google Map](#)

Formula Air

Est Agence France

2, rue Armand Bloch
25200 Montbéliard
France
Tel. +33 (0) 91 381 70 71
Fax +33 (0) 381 31 08 76

info-fr-est@formula-air.com
[view Google Map](#)

Formula Air

France Agence Ouest

19a rue Deshoulières
44000 Nantes
France
Tel. +33 (0) 89 251 90 75
Fax +33 (0) 251 89 94 06

info-fr-ouest@formula-air.com
[view Google Map](#)

Formula Air

France Agence Sud

Chemin de Peyrecave
09600 Regat
France
Tel: +33 561 66 79 70
Fax: +33 567 07 01 09

info-fr-sud@formula-air.com
[view Google Map](#)

Air Formula

Russia

Нижний Новгород
Россия
Tel: +7 (499) 609 23 54
Fax: +7 (831) 277 85 38

info-ru@formula-air.com
[View Google Map](#)

Formula Air

Vietnam

33, Lot 2, Den Lu 1
Hoang Mai District, Hanoi,
Vietnam
Tel: +84 (4) 38 62 68 01
Fax: +84 (4) 38 62 96 63

info@vinaduct.com
www.vinaduct.com
[View Google Map](#)

NOTE : All drawings and references contained within this manual are non-contractual and are subject to change without prior notice at the discretion of the Formula Air group and its partners.