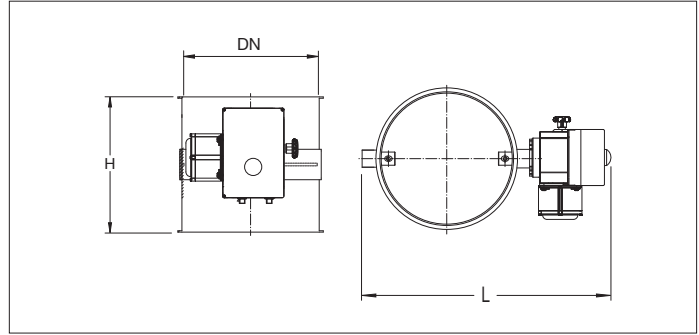


BADL Electric throttle valves without seal



BADL Electric throttle valves without seal

Full welded electric throttle valves to open or close a ducting line in an installation (no possibility to regulate).

The throttle valve blade is secured in a desired position by means of the electric actuator drive with limit switches in 220 V AC.

Material

2.00 mm black steel 1.0330 powder coated in RAL 7032. Electrostatically conductive and food-safe powder coating thickness of 30 to 60 µm. Temperature resistance up to +80°C.

Type

Rolled sheets with 6 mm edges for lock rings.

Options

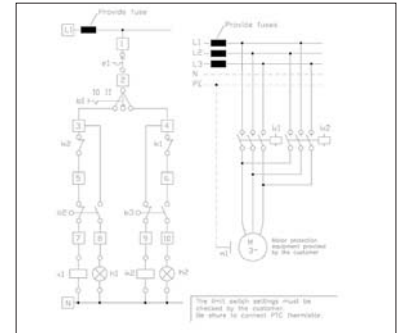
- FDA and EU compliant food-grade quality
- electro-galvanized or stainless steel execution
- wear resistant lining as of Ø150 (83° Shore)
- equipotential equalization or ATEX
- other colors
- other diameters
- other types of edges or connections



Visual position indicator on top of unit



Manual override knob



Wiring diagram of electric switch box

Ø d mm	Code	L mm	H mm	s mm	Weight kg
100	BADL000019	377	100	2.00	1.23
120	BADL000020	397	120	2.00	1.50
140	BADL000021	413	140	2.00	1.83
150	BADL000022	427	150	2.00	2.01
160	BADL000023	437	160	2.00	2.21
175	BADL000024	452	175	2.00	2.52
200	BADL000025	477	200	2.00	3.11
224	BADL000026	497	200	2.00	3.48
250	BADL000027	527	200	2.00	3.90
280	BADL000028	556	200	2.00	4.40
300	BADL000029	577	200	2.00	4.75
315	BADL000030	591	200	2.00	5.01
350	BADL000031	627	200	2.00	5.66
400	BADL000032	677	200	2.00	6.63