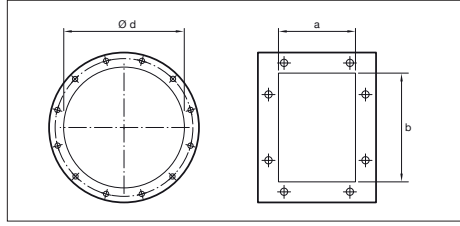
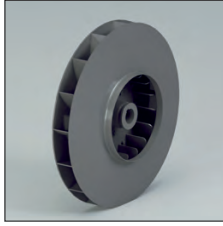
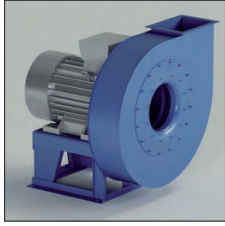


VI - VI/T



VI - VI/T

Direct and indirect driven centrifugal fans.

Impeller with negative (backwards curved) blades.

Application

For the transport of clean air.

Application area

Low-medium air volume, high pressures.

Technical specifications:

Air volume: 850 up to 180.000 m³/h
Total pressure: 100 up to 1.800 daPa.

Model	Installed power (kW)	Axle height (mm)	Poles	Inlet Ø d (mm)	Outlet dimensions a x b (mm)	Inspection door	Welding fan housing
VI400/N2	2.2	90	2	225	148 x 207	Optional	Optional
VI450/N2	3	100	2	250	166 x 231	Optional	Optional
VI450/N2	4	112	2	250	166 x 231	Optional	Optional
VI500/N2R	4	112	2	275	185 x 258	Optional	Optional
VI500/N2R	5.5	132	2	275	185 x 258	Optional	Optional
VI500/N2	5.5	132	2	275	185 x 258	Optional	Optional
VI500/N2	7.5	132	2	275	185 x 258	Optional	Optional
VI560/N2R	7.5	132	2	325	205 x 288	Optional	Optional
VI560/N2	11	160	2	325	205 x 288	Optional	Optional
VI630/N2R	15	160	2	350	229 x 322	Optional	Optional
VI630/N2R	18.5	160	2	350	229 x 322	Optional	Optional
VI630/N2	18.5	160	2	350	229 x 322	Optional	Optional
VI630/N2	22	180	2	350	229 x 322	Optional	Optional
VI710/N2R	22	180	2	400	256 x 361	Optional	Included
VI710/N2R	30	200	2	400	256 x 361	Optional	Included
VI710/N2	30	200	2	400	256 x 361	Optional	Included
VI710/N2	37	200	2	400	256 x 361	Optional	Included
VI800/N2R	45	225	2	450	288 x 404	Optional	Included
VI800/N2R	55	250	2	450	288 x 404	Optional	Included
VI800/N2	55	250	2	450	288 x 404	Optional	Included
VI800/N2	75	280	2	450	288 x 404	Optional	Included
VI900/N2R	90	280	2	500	322 x 453	Optional	Included
VI900/N2	110	315	2	500	322 x 453	Optional	Included
VI1000/N2R	160	315	2	550	361 x 507	Optional	Included
VI1000/N2	200	315	2	550	361 x 507	Optional	Included

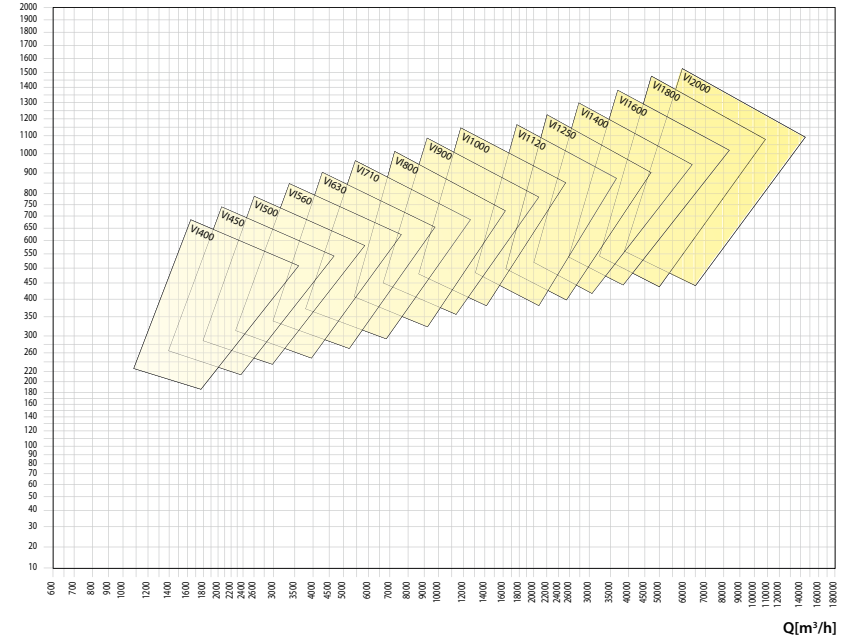
VI - VI/T

•Size	• Max rpm		
	CLASSE I	CLASSE II	CLASSE III
VI400	5000		
VI450/R	5000		
VI450	5000		
VI500/R	4750		
VI500	4500	5000	
VI560/R	4250	4750	
VI560	4000	4500	
VI630/R	3850	4150	4500
VI630	3700	3900	4250
VI710/R	3550	3850	4150
VI710	3400	3700	4000
VI800/R	3250	3550	3850
VI800	3000	3300	3600
VI900/R	3200	3500	3700
VI900	3000	3250	3450
VI1000/R	3150	3350	3450
VI1000	3000	3150	3350
VI1120	2700	2900	3100
VI1250	2400	2600	2800
VI1400	2100	2300	2450
VI1600	1850	2000	2100
VI1800	1650	1750	1850
VI2000	1450	1550	1650

• Values valid up to 60°C

• between	60°C	• and	100°C	• degrade speed	4%
			100°C		150°C
	150°C	200°C	16%		
	200°C	250°C	23%		
	250°C	300°C	30%		
	300°C	350°C	37%		
	350°C	400°C	45%		
	400°C	450°C	54%		
	450°C	500°C	64%		

pt [mmH₂O]



FA107FM_2014V20.UK

FA107FM_2014V20.UK

