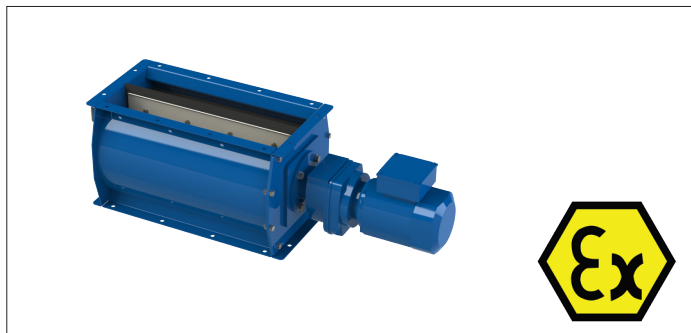


RVC ATEX Rotary valves



RVC ATEX rotary valves

The RVC ATEX rotary valves are designed to discharge dust and other materials from filters and cyclones and treat volumes ranging from 10 to 83 m³/h.

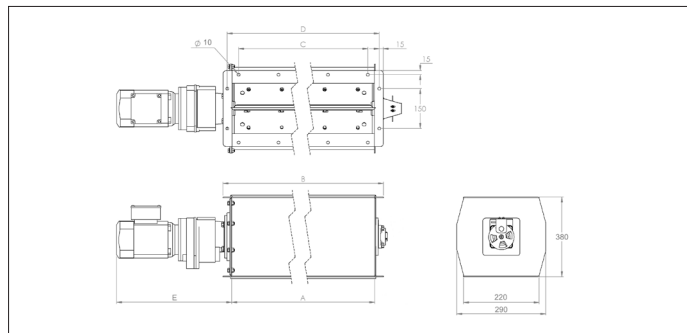
These rotary valves are produced according to the following harmonized directives/standards :

- 2006/42/EC ; Machine directive
- 2014/35/EC ; Low voltage directive
- 2014/30/EC ; Electromagnetic compatibility directive
- 2014/34/EC : ATEX directive

The RVC ATEX rotary valves are Ex II St1 approved.

ATEX information

- ATEX directive : 2014/34/EU
- Certification : FTZU 05 ATEX 0184X
- $P_{red, max}$: 75 KPa
- KST_{max} : 20 MPa.m.s⁻¹



Material

St 37.2 black steel with primary paint and epoxy powder coated RAL 5002.

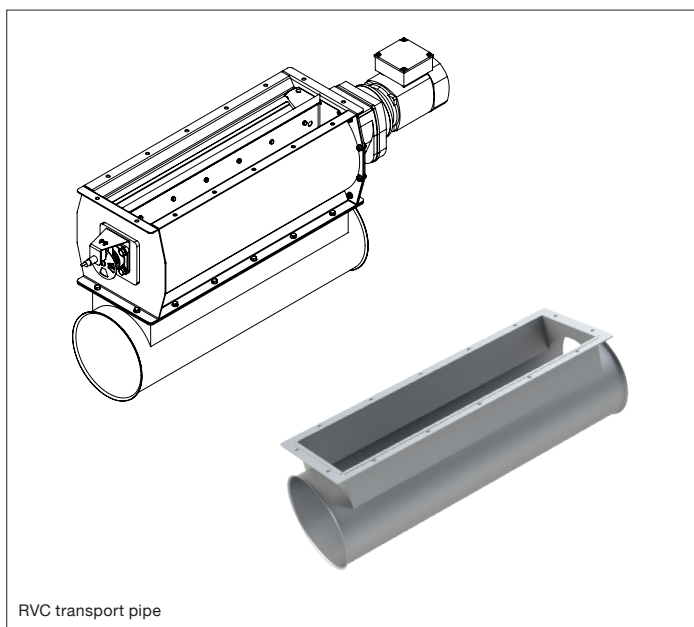
Temperature resistance : +80°C

Type

3 mm rolled plates welded together
End plates bolted to the body
8 chamber rotor with rubber blades
Temperature range -20°C up to +60°C

Accessories

- Visual rotation indicator
- Rotation detectors
- Counter flanges
- Replacement rubber blades
- Transport and discharge pipes

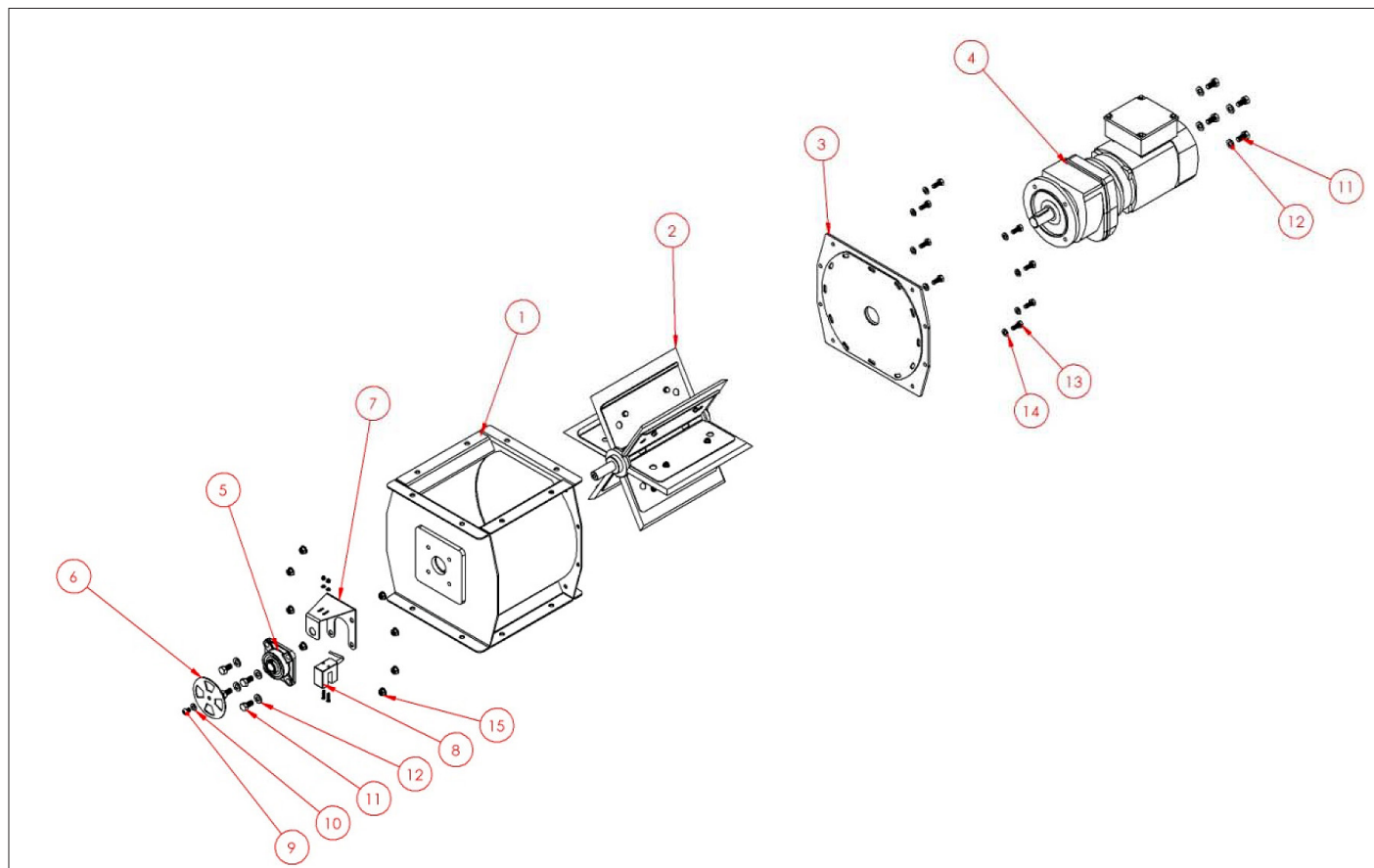


RVC transport pipe

Model	Discharge volume (m³/h) ¹⁾	Rot. speed (rpm)	Mot. power (kW)	A (mm)	B (mm)	C modular (mm)	D (mm)	E (mm)	Weight (kg)
RVC1-X3-08	15	38	0.37	220	290	150	260	435	68
RVC2-X3-08	22	18	0.37	670	740	5 x 150	710	603	96
RVC3-X3-08	31	18	0.37	925	995	6 x 150	965	603	110

¹⁾ Volume output at 50% degree of filling

RVC ATEX Rotary valves



Components list for rotary valve type RVC

Please only use original components to guarantee a worry free functioning of the rotary valves.

#	Part	Description
1	Rubber blades	8 x rubber blades
2	Shaft seal ring	2 x seals
3	Blade supports	8 x ST37, powder coated RAL 5010
4	Shaft with blade supports	1 x ST37, powder coated RAL 5010
5	Dust seal pad	2 x felt pads for sealing
6	Support for dust pad	2 x support 0,63 mm
7	Support for dust support	2 x support 2 mm
8	Flanged bearing	2 x pieces
9	1/2 coupling	Half coupling rotary side
10	Bush coupling	Bush for coupling
11	1/2 coupling	Half coupling motor side
12	Coupling housing	ST37, powder coated RAL 5010
13	Gear	Cast-iron
14	Motor	Electric motor 0,37 or 0,55 kW
15	Rotary valve housing	ST37, powder coated RAL 5010
16	End plate	ST37, powder coated RAL 5010