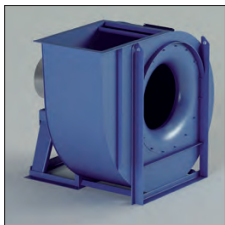


RL - RL/T



RL - RL/T

Direct and indirect driven centrifugal fans. Impeller with negative (backwards curved) blades.

Application

For the transport of clean air.

Application area

Medium-high air volumes, low pressures.

Technical specifications:

Air volume: 1.000 up to 270.000 m³/h
Total pressure: 20 up to 460 daPa.

Model	Installed power (kW)	Axle height mm	Poles	Inlet ø d mm	Outlet dimensions a x b mm	Inspection door	Welding fan housing
RL250/2	0.55	71	2	250	185 x 258	Optional	Optional
RL280/2	1.1	80	2	275	205 x 288	Optional	Optional
RL310/2	2.2	90	2	325	229 x 322	Optional	Optional
RL350/2	3	100	2	350	256 x 361	Optional	Optional
RL400/2R	4	112	2	400	288 x 404	Optional	Optional
RL400/2	5.5	132	2	400	288 x 404	Optional	Optional
RL450/2R	7.5	132	2	450	322 x 453	Optional	Optional
RL450/2	11	160	2	450	322 x 453	Optional	Optional
RL500/2R	15	160	2	500	361 x 507	Optional	Optional
RL500/2	18.5	160	2	500	361 x 507	Optional	Optional
RL310/4	0.18	63	4	325	229 x 322	Optional	Optional
RL350/4	0.37	71	4	350	256 x 361	Optional	Optional
RL400/4R	0.55	80	4	400	288 x 404	Optional	Optional
RL400/4	0.75	80	4	400	288 x 404	Optional	Optional
RL450/4R	0.75	80	4	450	322 x 453	Optional	Optional
RL450/4	1.1	90	4	450	322 x 453	Optional	Optional
RL500/4R	1.5	90	4	500	361 x 507	Optional	Optional
RL500/4	2.2	100	4	500	361 x 507	Optional	Optional
RL560/4R	3	100	4	550	404 x 569	Optional	Optional
RL560/4	4	112	4	550	404 x 569	Optional	Optional
RL630/4R	5.5	132	4	630	453 x 638	Optional	Optional
RL630/4	7.5	132	4	630	453 x 638	Optional	Optional
RL710/4R	11	160	4	710	507 x 715	Optional	Optional
RL710/4	15	160	4	710	507 x 715	Optional	Optional
RL800/4R	18.5	180	4	800	569 x 801	Optional	Optional
RL800/4	22	180	4	800	569 x 801	Optional	Optional
RL900/4R	37	225	4	900	638 x 898	Included	Included
RL900/4	45	225	4	900	638 x 898	Included	Included
RL1000/4R	55	250	4	1000	715 x 1007	Included	Included
RL1000/4	75	280	4	1000	715 x 1007	Included	Included
RL500/6R	0.37	80	6	500	361 x 507	Included	Included
RL500/6	0.55	80	6	500	361 x 507	Included	Included
RL560/6R	0.75	90	6	550	404 x 569	Included	Included
RL560/6	1.1	90	6	550	404 x 569	Included	Included
RL630/6R	1.5	100	6	630	453 x 638	Included	Included
RL630/6	2.2	112	6	630	453 x 638	Included	Included
RL710/6R	3	132	6	710	507 x 715	Included	Included
RL710/6	4	132	6	710	507 x 715	Included	Included
RL800/6R	5.5	132	6	800	569 x 801	Included	Included
RL800/6	7.5	160	6	800	569 x 801	Included	Included
RL900/6R	11	160	6	900	638 x 898	Included	Included
RL900/6	15	180	6	900	638 x 898	Included	Included
RL1000/6R	18.5	200	6	1000	715 x 1007	Included	Included
RL1000/6	22	200	6	1000	715 x 1007	Included	Included
RL1120/6R	30	225	6	1100	801 x 1130	Included	Included
RL1120/6	37	250	6	1100	801 x 1130	Included	Included
RL1250/6R	55	280	6	1250	898 x 1267	Included	Included
RL1250/6	75	315	6	1250	898 x 1267	Included	Included
RL1400/6R	90	315	6	1400	1007 x 1421	Included	Included
RL1400/6	110	315	6	1400	1007 x 1421	Included	Included

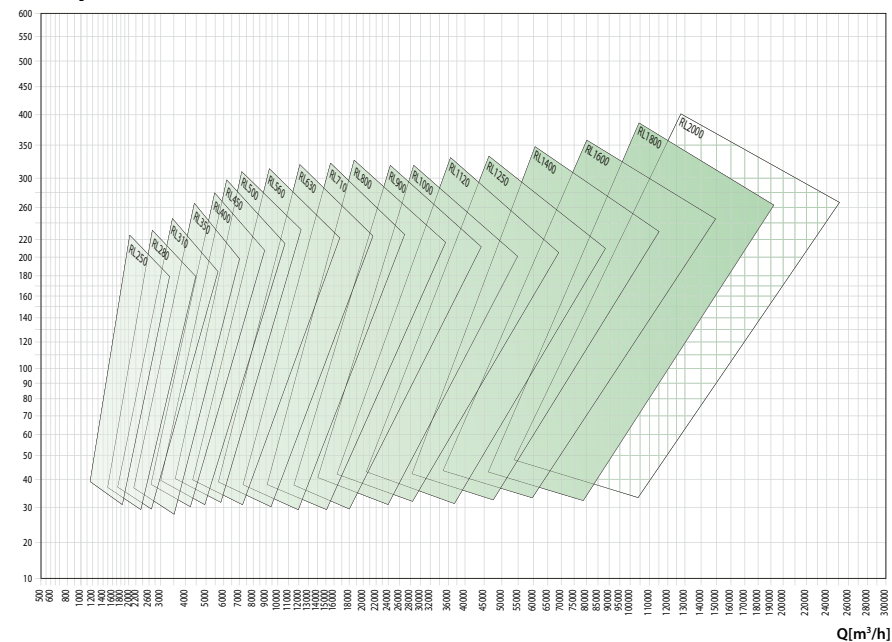
RL - RL/T

•Size	• Max rpm		
	CLASSE I	CLASSE II	CLASSE III
RL250	4000	5000	6000
RL280	3600	4400	5300
RL310	3200	4000	4750
RL350	2900	3600	4250
RL400	2600	3200	3900
RL450/R	2500	3000	3700
RL450	2350	2850	3500
RL500/R	2200	2700	3300
RL500	2050	2550	3100
RL560/R	1900	2400	3000
RL560	1800	2250	2800
RL630/R	1700	2150	2600
RL630	1600	2050	2500
RL710/R	1900	2300	2550
RL710	1800	2200	2400
RL800/R	1700	2050	2300
RL800	1600	1950	2150
RL900/R	1500	1850	2000
RL900	1450	1750	1900
RL1000/R	1350	1650	1800
RL1000	1250	1550	1700
RL1120/R	1250	1350	1450
RL1200	1200	1300	1400
RL1250/R	1150	1250	1350
RL1250	1100	1200	1300
RL1400/R	1050	1150	1250
RL1400	1000	1100	1200
RL1600	900	1000	1100
RL1800	800	900	1000
RL2000	700	800	900

• Values valid up to 60°C

• between	60°C	100°C	• degrade speed
	100°C	150°C	
150°C	200°C	10%	
200°C	250°C	16%	
250°C	300°C	23%	
300°C	350°C	30%	
350°C	400°C	37%	
400°C	450°C	45%	
450°C	500°C	54%	
		64%	

pt [mmH₂O]



FA107/FA120/FA140/FA160/FA180/FA200

FA107/FA120/FA140/FA160/FA180/FA200

