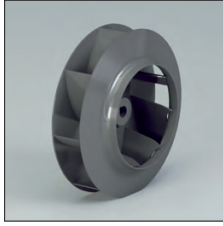
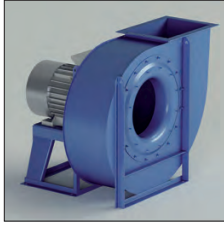


**GF - GF/T**



**GF – GF/T**

Direct and indirect driven centrifugal fans. Impeller with negative (backwards curved) blades.

**Application**

For the transport of clean or lightly loaded air, small quantities of sawdust, small granular material with the exclusion of filaments.

**Application area**

High air volumes, low-medium pressures.

**Technical specifications:**

Air volume: 360 up to 216.000 m<sup>3</sup>/h  
Total pressure: 70 up to 915 daPa.

Model	Installed power (kW)	Axle height mm	Poles	Inlet ø d mm	Outlet dimensions a x b mm	Inspection door	Welding fan housing
GF250/2	0.37	71	2	200	148 x 207	Optional	Optional
GF280/2	0.55	71	2	225	166 x 231	Optional	Optional
GF310/2	1.1	80	2	250	185 x 258	Optional	Optional
GF350/2	2.2	90	2	275	205 x 288	Optional	Optional
GF400/2	3	100	2	325	229 x 322	Optional	Optional
GF400/2	4	112	2	325	229 x 322	Optional	Optional
GF450/2R	5.5	132	2	350	256 x 361	Optional	Optional
GF450/2	5.5	132	2	350	256 x 361	Optional	Optional
GF450/2	7.5	132	2	350	256 x 361	Optional	Optional
GF500/2R	7.5	132	2	400	288 x 404	Optional	Optional
GF500/2	9.2	160	2	400	288 x 404	Optional	Optional
GF500/2	11	160	2	400	288 x 404	Optional	Optional
GF560/2R	15	160	2	450	322 x 453	Optional	Optional
GF560/2	15	160	2	450	322 x 453	Optional	Optional
GF560/2	18.5	160	2	450	322 x 453	Optional	Optional
GF630/2R	22	180	2	500	361 x 507	Optional	Optional
GF630/2R	30	200	2	500	361 x 507	Optional	Optional
GF630/2	30	200	2	500	361 x 507	Optional	Optional
GF630/2	37	200	2	500	361 x 507	Optional	Optional
GF710/2R	45	225	2	550	404 x 569	Included	Included
GF710/2R	55	250	2	550	404 x 569	Included	Included
GF710/2	55	250	2	550	404 x 569	Included	Included
GF710/2	75	280	2	550	404 x 569	Included	Included
GF800/2R	90	280	2	630	453 x 638	Included	Included
GF800/2	110	315	2	630	453 x 638	Included	Included
GF500/4	1.1	90	4	400	288 x 404	Optional	Optional
GF560/4	2.2	100	4	450	322 x 453	Optional	Optional
GF630/4	4	112	4	500	361 x 507	Optional	Optional
GF710/4R	5.5	132	4	550	404 x 569	Included	Included
GF710/4	7.5	132	4	550	404 x 569	Included	Included
GF800/4R	11	160	4	630	453 x 638	Included	Included
GF800/4	15	160	4	630	453 x 638	Included	Included
GF900/4R	18.5	180	4	710	507 x 715	Included	Included
GF900/4	30	200	4	710	507 x 715	Included	Included
GF1000/4R	37	225	4	800	569 x 801	Included	Included
GF1000/4	45	225	4	800	569 x 801	Included	Included
GF1120/4R	55	250	4	900	638 x 898	Included	Included
GF1120/4	75	280	4	900	638 x 898	Included	Included
GF1250/4R	110	315	4	1000	715 x 1007	Included	Included
GF1250/4	132	315	4	1000	715 x 1007	Included	Included
GF1400/4R	200	315	4	1100	801 x 1130	Included	Included
GF1400/4	250	315	4	1100	801 x 1130	Included	Included
GF800/6	4	132	6	630	453 x 638	Included	Included
GF900/6	7.5	160	6	710	507 x 715	Included	Included
GF1000/6R	11	160	6	800	569 x 801	Included	Included
GF1000/6	15	180	6	800	569 x 801	Included	Included
GF1120/6R	18.5	200	6	900	638 x 898	Included	Included
GF1120/6	22	200	6	900	638 x 898	Included	Included
GF1250/6R	30	225	6	1000	715 x 1007	Included	Included
GF1250/6	37	250	6	1000	715 x 1007	Included	Included
GF1400/6R	45	280	6	1100	801 x 1130	Included	Included
GF1400/6	75	315	6	1100	801 x 1130	Included	Included

**GF - GF/T**

Size	Max rpm			
	CLASSE I	CLASSE II	CLASSE III	CLASSE IV
GF250	5000			
GF280	4750			
GF310	4500			
GF350/R	4350			
GF350	4250			
GF400/R	4100	5800		
GF400	4000	5600		
GF450/R	3750	5400		
GF450	3600	5000		
GF500/R	3500	4750		
GF500	3400	4500		
GF560/R	3300	4250	4750	
GF560	3200	4000	4500	
GF630/R	3100	3750	4250	
GF630	2950	3600	4000	
GF710/R	2800	3400	3750	
GF710	2600	3200	3550	
GF800/R	2500	3000	3350	3570
GF800	2350	2800	3150	3500
GF900/R	2200	2650	3000	3300
GF900	2100	2500	2800	3100
GF1000/R	2000	2350	2700	
GF1000	1900	2250	2550	
GF1120/R	1800	2150	2400	
GF1120	1700	2000	2250	
GF1250/R	1600	1900	2100	
GF1250	1500	1800	2000	
GF1400/R	1400	1700	1900	
GF1400	1300	1600	1800	
GF1600	1100	1400	1600	
GF1800	1200	1350	1450	
GF1900	1100	1250	1350	
GF2000	1000	1150	1250	

• Values valid up to 60°C

between	60°C	100°C	degrade speed
	and	150°C	
	200°C	250°C	4%
	250°C	300°C	10%
	300°C	350°C	16%
	350°C	400°C	23%
	400°C	450°C	30%
	450°C	500°C	37%
			45%
			54%
			64%

**pt (mmH<sub>2</sub>O)**

