

PRICELIST

Fans on Stock

**INDUSTRIAL DUST
EXTRACTION SOLUTIONS**

Introduction

Formula Air works with a broad fan program especially selected to cover a wide range of applications in all types of industries having the following characteristics :

- **Clean air models for :**

Drying, air conditioning, cooling, pressurizing, ventilation, and various gases, dust extraction.

- **Loaded air models for :**

Sawdust, various types of shavings, granular material, fiber material and pneumatic transport or centralized cleaning.

- **Sizes:**

220 up to 2000.

- **Installed motor power :**

from 0,12 kW up to 250 kW.



Standard execution



Standard housing :

Powdercoated polyester electrostatic paint with a thickness of 70 microns but other colors as well as other finishes are available on request. All models are also available in hot-dipped galvanized steel, AISI 304 or AISI 316.

The housing is lockformed in standard executions up to a certain size, beyond this size, they are welded and the orientation can no longer be adapted.

Standard impeller :

Spray painted in gray with a thickness of 50 microns, they are statically and dynamically balanced according to ISO 1940/1.

Standard colors :



Fan housing and chair - RAL 5010



Fan guards - RAL 2002



Fan impeller and accessories - RAL 9007

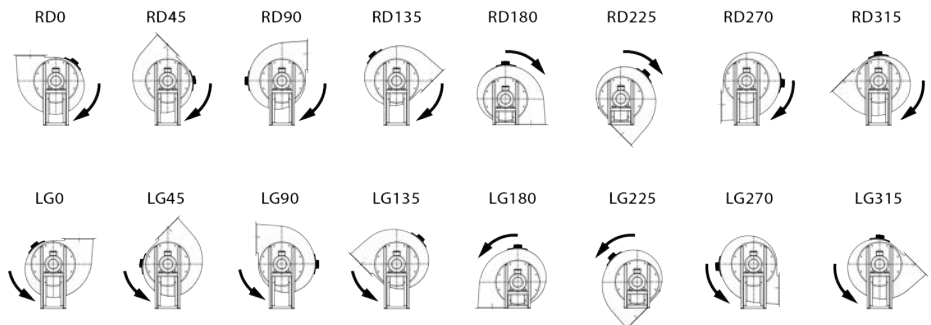
Disclaimer

The mentioned prices are stated ex-works, excluding VAT and in Euros. The prices in this pricelist are for informational purposes only and are subject to change without prior notice at our convenience. Images of the products used are 3D illustrations. Small deviations are therefore possible. For delivery conditions see our website: www.formula-air.com

Stock fan orientation

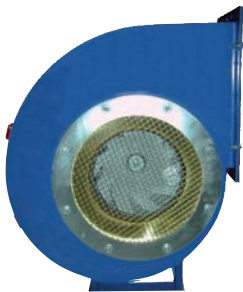
All fans on stock are in orientation 0 (upwards) but most can be oriented in another position per your needs.

NOTE : Execution 180 & 225 require special treatments and cannot be done on stock fans.

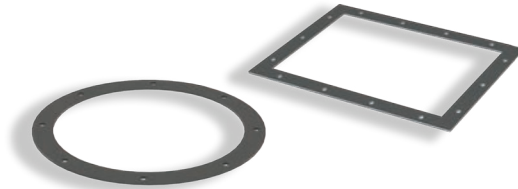


Fan accessories

A lot of the following accessories are available from stock.



Inlet and outlet grills
to avoid that foreign bodies enter the fan



Inlet and outlet counter-flanges
In galvanized steel. These are to connect your ductwork to the fan.



Inlet and outlet flexible connections
for clean or loaded air



Silent blocks
Prevent the transmission of vibrations in the building structure and reduce the lateral and vertical vibration effect

Table of contents

1. Centrifugal fans

4

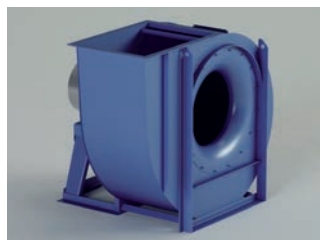
RL fans | RM fans | GF fans | GR fans | ZM fans | VM fans

2. Centrifugal fan accessories

12

Accessories | Inlet accessories | Outlet accessories | Silent blocks

RL fans

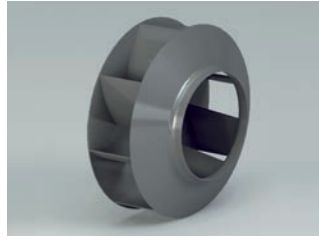
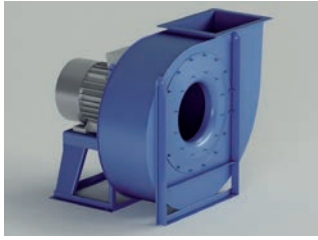


- **Field of operation :**
High capacity / medium-low pressure.
- **Fan wheel type :**
Reversed vanes with cover.
- **Applications :**
Suction and conveyance of clean to slightly dusty air with the exception of filaments. Suitable for a range of applications within industrial and air-conditioning plants.
- **Technical specifications :**
Air volumes : 1.000 to 270.000 m³/h.
Total pressure : 20 up to 460 daPa.

Fan model	Description	Article code	Fan orientation	Air volume [m ³ /h]	Static Pressure [Pa]st	Installed motor [kW]	Number of poles	Application	Price
				Min. - Max.	Max. - Min.				
RL 280/2	Fan unit: RL 280/2 - RD 0 with Cemer motor: 1.1 kW-3000-2P-Ex4	HBMA000003	RD 0	1500 - 3500	1015 - 334	1,1	2	Clean Air	738 €
RL 280/2	Fan unit: RL 280/2 - LG 0 with Cemer motor: 1.1 kW-3000-2P-Ex4	HBMA000004	LG 0	1500 - 3500	1015 - 334	1,1	2	Clean Air	738 €
RL 310/2	Fan unit: RL 310/2 - RD 0 with Cemer motor: 2.2 kW-3000-2P-Ex4	HBMA000005	RD 0	2000 - 5300	1375 - 410	2,2	2	Clean Air	914 €
RL 350/2	Fan unit: RL 350/2 - RD 0 with Cemer motor: 3 kW-3000-2P-Ex4	HBMA000007	RD 0	3000 - 7200	1668 - 645	3	2	Clean Air	1.183 €
RL 400/2R	Fan unit: RL 400/2R - RD 0 with Cemer motor: 4 kW-3000-2P-Ex4	HBMA000009	RD 0	3800 - 6800	2010 - 1400	4	2	Clean Air	1.391 €
RL 400/2	Fan unit: RL 400/2 - RD 0 with Cemer motor: 5.5 kW-3000-2P-Ex4	HBMA000011	RD 0	4200 - 9000	2210 - 1170	5,5	2	Clean Air	1.566 €
RL 400/4	Fan unit: RL 400/4 - RD 0 with Cemer motor: 0.75 kW-1500-4P-Ex4	HBMA000027	RD 0	1800 - 4200	510 - 280	0,75	4	Clean Air	1.110 €
RL 450/2R	Fan unit: RL 450/2R - RD 0 with Cemer motor: 7.5 kW-3000-2P-Ex4	HBMA000013	RD 0	5000 - 11000	2600 - 1265	7,5	2	Clean Air	1.783 €
RL 450/2	Fan unit: RL 450/2 - RD 0 with Cemer motor: 11 kW-3000-2P-Ex4	HBMA000015	RD 0	5500 - 14500	3030 - 1070	11	2	Clean Air	2.332 €
RL 500/2R	Fan unit: RL 500/2R - RD 0 with Cemer motor: 15 kW-3000-2P-Ex4	HBMA000017	RD 0	7200 - 18000	3250 - 1230	15	2	Clean Air	2.637 €
RL 500/2	Fan unit: RL 500/2 - RD 0 with Cemer motor: 18.5 kW-3000-2P-Ex4	HBMA000019	RD 0	8000 - 21000	3670 - 1250	18,5	2	Clean Air	2.819 €
RL 500/4R	Fan unit: RL 500/4R - RD 0 with Cemer motor: 1.5 kW-1500-4P-Ex4	HBMA000033	RD 0	3600 - 8000	740 - 365	1,5	4	Clean Air	1.515 €
RL 500/4	Fan unit: RL 500/4 - RD 0 with Cemer motor: 2.2 kW-1500-4P-Ex4	HBMA000035	RD 0	4000 - 10500	860 - 260	2,2	4	Clean Air	1.598 €
RL 500/4	Fan unit: RL 500/4 - LG 0 with Cemer motor: 2.2 kW-1500-4P-Ex4	HBMA000036	LG 0	4000 - 10500	860 - 260	2,2	4	Clean Air	1.598 €
RL 560/4	Fan unit: RL 560/4 - RD 0 with Cemer motor: 4 kW-1500-4P	HBMA000039	RD 0	6000 - 15000	1070 - 235	4	4	Clean Air	1.983 €
RL 710/4R	Fan unit: RL 710/4R - RD 0 with Cemer motor: 11 kW-1500-4P-Ex4	HBMA000045	RD 0	10000 - 23500	1650 - 750	11	4	Clean Air	3.296 €
RL 710/4	Fan unit: RL 710/4 - RD 0 with Cemer motor: 15 kW-1500-4P-Ex4	HBMA000047	RD 0	11000 - 29500	1860 - 640	15	4	Clean Air	3.404 €
RL 800/4R	Fan unit: RL 800/4R - RD0 with Cemer motor: 18.5kW-1500-4P	HBMA000049	RD0	14500 - 34000	2260 - 1080	18,5	4	Clean Air	4.396 €
RL 900/4R	Fan unit: RL 900/4R - RD 0 with Cemer motor: 37 kW-1500-4P-Ex4	HBMA000053	RD 0	21000 - 48000	2930 - 1510	37	4	Clean Air	6.721 €
RL 900/4	Fan unit: RL 900/4 - RD 0 with Cemer motor: 45 kW-1500-4P-Ex4	HBMA000055	RD 0	21000 - 58000	3140 - 1150	45	4	Clean Air	6.997 €

! All stock fans are supplied with front support.

RM fans

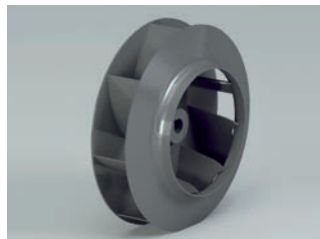
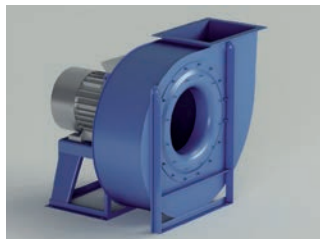


- **Field of operation :**
Medium capacity / medium pressure.
- **Fan wheel type :**
Reversed vanes with cover.
- **Applications :**
Suction and conveyance of clean to very dusty air with the exception of filaments. Including sawdust, various types of shavings, granular material, excepted fibers.
- **Technical specifications :**
Air volumes : 360 up to 180.000 m³/h.
Total pressure : 50 up to 560 daPa.

Fan model	Description	Article code	Fan orientation	Air volume [m ³ /h]	Static Pressure [Pa]st	Installed motor [kW]	Number of poles	Application	Price
				Min. - Max.	Max. - Min.				
RM 250/2	Fan unit: RM 250/2 - RD 0 with Cemer motor: 0.37 kW-3000-2P-Ex4	HBMA000105	RD 0	480 - 1300	948 - 428	0,37	2	Dusty Air	477 €
RM 280/2R	Fan unit: RM 280/2R - RD0 with Cemer motor: 0.55kW-3000-2P-Ex4	HBMA000107	RD0	500 - 1700	1078 - 335	0,55	2	Dusty Air	785 €
RM 280/2	Fan unit: RM 280/2 - RD 0 with Cemer motor: 0.75 kW-3000-2P-Ex4	HBMA000109	RD 0	600 - 2000	1205 - 350	0,75	2	Dusty Air	854 €
RM 280/2	Fan unit: RM 280/2 - LG 0 with Cemer motor: 0.75 kW-3000-2P-Ex4	HBMA000110	LG 0	600 - 2000	1205 - 350	0,75	2	Dusty Air	600 €
RM 310/2R	Fan unit: RM 310/2R - RD 0 with Cemer motor: 1.1 kW-3000-2P-Ex4	HBMA000111	RD 0	850 - 2600	1520 - 510	1,1	2	Dusty Air	664 €
RM 310/2R	Fan unit: RM 310/2R - LG 0 with Cemer motor: 1.1 kW-3000-2P-Ex4	HBMA000112	LG 0	850 - 2600	1520 - 510	1,1	2	Dusty Air	664 €
RM 310/2	Fan unit: RM 310/2 - RD 0 with Cemer motor: 1.5 kW-3000-2P-Ex4	HBMA000113	RD 0	950 - 2650	1595 - 735	1,5	2	Dusty Air	702 €
RM 310/2	Fan unit: RM 310/2 - LG 0 with Cemer motor: 1.5 kW-3000-2P-Ex4	HBMA000114	LG 0	950 - 2650	1595 - 735	1,5	2	Dusty Air	702 €
RM 350/2R	Fan unit: RM 350/2R - RD 0 with Cemer motor: 1.5 kW-3000-2P-Ex4	HBMA000115	RD 0	950 - 2650	1595 - 735	1,5	2	Dusty Air	808 €
RM 350/2	Fan unit: RM 350/2 - RD 0 with Cemer motor: 2.2 kW-3000-2P-Ex4	HBMA000117	RD 0	1150 - 2300	1840 - 1655	2,2	2	Dusty Air	830 €
RM 350/2	Fan unit: RM 350/2 - LG 0 with Cemer motor: 2.2 kW-3000-2P-Ex4	HBMA000118	LG 0	1150 - 2300	1840 - 1655	2,2	2	Dusty Air	830 €
RM 400/2R	Fan unit: RM 400/2R - RD 0 with Cemer motor: 3 kW-3000-2P-Ex4	HBMA000119	RD 0	1800 - 5500	2665 - 765	3	2	Dusty Air	1.071 €
RM 400/2	Fan unit: RM 400/2 - RD 0 with Cemer motor: 4 kW-3000-2P-Ex4	HBMA000121	RD 0	1800 - 6000	2800 - 720	4	2	Dusty Air	1.140 €
RM 400/2	Fan unit: RM 400/2 - LG 0 with Cemer motor: 4 kW-3000-2P-Ex4	HBMA000122	LG 0	1800 - 6000	2800 - 720	4	2	Dusty Air	1.140 €
RM 450/2R	Fan unit: RM 450/2R - RD 0 with Cemer motor: 5.5 kW-3000-2P-Ex4	HBMA000123	RD 0	2700 - 7500	3135 - 865	5,5	2	Dusty Air	1.482 €
RM 450/2	Fan unit: RM 450/2 - RD 0 with Cemer motor: 7.5 kW-3000-2P-Ex4	HBMA000125	RD 0	3000 - 8500	3330 - 820	7,5	2	Dusty Air	1.558 €
RM 500/2R	Fan unit: RM 500/2R - RD 0 with Cemer motor: 11 kW, 2P-Ex4	HBMA000127	RD 0	3700 - 10500	3670 - 1235	11	2	Dusty Air	2.259 €
RM 500/2	Fan unit: RM 500/2 - RD 0 with Cemer motor: 15 kW-3000-2P-Ex4	HBMA000129	RD 0	4200 - 12000	3940 - 1155	15	2	Dusty Air	2.355 €
RM 500/4	Fan unit: RM 500/4 - RD 0 with Cemer motor: 1.5 kW-1500-4P-Ex4	HBMA000137	RD 0	1900 - 5800	915 - 268	1,5	4	Dusty Air	1.320 €
RM 560/4	Fan unit: RM 560/4 - RD 0 with Cemer motor: 3 kW-1500-4P-Ex4	HBMA000141	RD 0	2700 - 8500	1175 - 285	3	4	Dusty Air	1.790 €

! All stock fans are supplied with front support.

GF fans

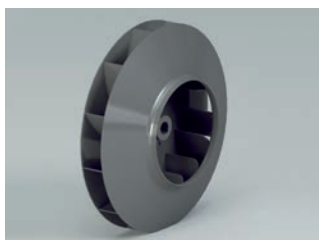
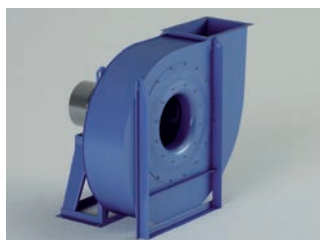


- **Field of operation :**
Medium-high capacity / medium pressure.
- **Fan wheel type :**
Reversed vanes with cover.
- **Applications :**
Suction and conveyance of clean to dusty air with the exception of filaments. Low quantities of sawdust, various types of shavings, granular material, excepted fibers.
- **Technical specifications :**
Air volumes : 360 up to 216.000 m³/h.
Total pressure : 70 up to 915 daPa.

Fan model	Description	Article code	Fan orientation	Air volume [m ³ /h]		Static Pressure [Pa]st		Installed motor [kW]	Number of poles	Application	Price
				Min. - Max.	Max. - Min.						
GF 250/2	Fan unit: GF 250/2 - RD 0 with Cemer motor: 0.37 kW-3000-2P-Ex4	HBMA000191	RD 0	450 - 1150	880 - 640	0,37	2	Dusty Air	494 €		
GF 280/2	Fan unit: GF 280/2 - RD 0 with Cemer motor: 0.55 kW-3000-2P-Ex4	HBMA000193	RD 0	450 - 1520	1115 - 820	0,55	2	Dusty Air	555 €		
GF 310/2	Fan unit: GF 310/2 - RD 0 with Cemer motor: 1.1 kW-3000-2P-Ex4	HBMA000195	RD 0	800 - 2200	1495 - 1235	1,1	2	Dusty Air	685 €		
GF 350/2	Fan unit: GF 350/2 - RD 0 with Cemer motor: 2.2 kW-3000-2P-Ex4	HBMA000197	RD 0	1050 - 3000	1940 - 1630	2,2	2	Dusty Air	858 €		
GF 400/2	Fan unit: GF 400/2 - RD 0 with Cemer motor: 4 kW-3000-2P-Ex4	HBMA000199	RD 0	1600 - 4300	2500 - 2100	4	2	Dusty Air	1.204 €		
GF 450/2R	Fan unit: GF 450/2R - RD 0 with Cemer motor: 5.5 kW-3000-2P-Ex4	HBMA000201	RD 0	2400 - 7500	3020 - 1485	5,5	2	Dusty Air	1.563 €		
GF 450/2	Fan unit: GF 450/2 - RD 0 with Cemer motor: 5.5 kW-3000-2P-Ex4	HBMA000203	RD 0	2700 - 5500	3310 - 2740	5,5	2	Dusty Air	1.563 €		
GF 500/2	Fan unit: GF 500/2 - RD 0 with Cemer motor: 11 kW-3000-2P-Ex4	HBMA000207	RD 0	3800 - 10000	4100 - 2610	11	2	Dusty Air	2.356 €		
GF 560/4	Fan unit: GF 560/4 - RD 0 with Cemer motor: 2.2 kW-1500-4P-Ex4	HBMA000227	RD 0	2600 - 6900	1185 - 740	2,2	4	Dusty Air	1.898 €		
GF 710/4	Fan unit: GF 710/4 - RD 0 with Cemer motor: 7.5 kW-1500-4P-Ex4	HBMA000233	RD 0	5000 - 13000	1980 - 1620	7,5	4	Dusty Air	3.209 €		

! All stock fans are supplied with front support.

GR fans

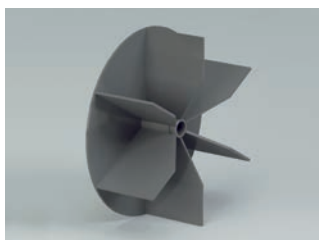
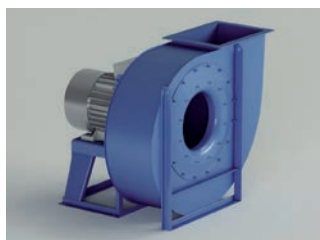


- **Field of operation :**
Medium capacity / medium-high pressure.
- **Fan wheel type :**
Reversed vanes with cover.
- **Applications :**
Suction and conveyance of clean to slightly dusty air with the exception of filaments. Suitable for conveying solid materials mixed with air, shavings and sawdust.
- **Technical specifications :**
Air volumes : 1.500 up to 140.000 m³/h.
Total pressure : 150 up to 1.100 daPa.

Fan model	Description	Article code	Fan orientation	Air volume [m ³ /h]	Static Pressure [Pa]st	Installed motor [kW]	Number of poles	Applica-tion	Price
				Min. - Max.	Max. - Min.				
GR 400/2	Fan unit: GR 400/2 - RD 0 with Cemer motor: 3 kW-3000-2P-Ex4	HBMA000345	RD 0	1500 - 4100	2570 - 1300	3	2	Smoke, fine dust	1.150 €
GR 400/2R	Fan unit: GR 400/2R - RD 0 with Cemer motor: 2.2 kW-3000-2P-Ex4	HBMA000347	RD 0	1400 - 2850	2500 - 2000	2,2	2	Smoke, fine dust	1.042 €
GR 450/2	Fan unit: GR 450/2 - RD 0 with Cemer motor: 5.5 kW-3000-2P-Ex4	HBMA000349	RD 0	2200 - 6000	3420 - 1430	5,5	2	Smoke, fine dust	1.551 €
GR 450/2R	Fan unit: GR 450/2R - RD 0 with Cemer motor: 4 kW-3000-2P-Ex4	HBMA000351	RD 0	2050 - 4500	3090 - 1935	4	2	Smoke, fine dust	1.376 €
GR 500/2	Fan unit: GR 500/2 - RD 0 with Cemer motor: 11 kW-3000-2P-Ex4	HBMA000353	RD 0	2800 - 9000	4325 - 1200	11	2	Smoke, fine dust	2.343 €
GR 500/2R	Fan unit: GR 500/2R - RD 0 with Cemer motor: 7.5 kW-3000-2P-Ex4	HBMA000355	RD 0	2500 - 7500	3990 - 1575	7,5	2	Smoke, fine dust	1.786 €

! All stock fans are supplied with front support.

ZM fans

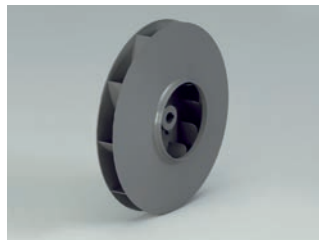
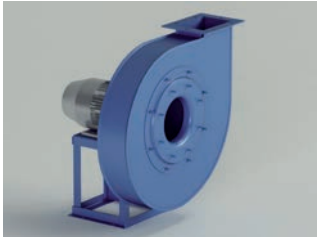


- **Field of operation :**
Medium capacity / medium pressure.
- **Fan wheel type :**
Straight radial vanes, open.
- **Applications :**
Suction and conveyance of very dusty air. With material in suspension, including air containing sawdust, various types of shavings , granular materials and filaments.
- **Technical specifications :**
Air volumes : 200 up to 65.000 m³/h.
Total pressure : 300 up to 500 daPa.

Fan model	Description	Article code	Fan orientation	Air volume [m ³ /h]		Static Pressure [Pa]st		Installed motor [kW]	Number of poles	Applica-tion	Price
				Min. - Max.	Max. - Min.						
ZM 280/2R	Fan unit: ZM 280/2R - RD 0 with Cemer motor: 1.1 kW-3000-2P-Ex4	HBMA000463	RD 0	500 - 1400	1150 - 770	1,1	2	Solid materials	615 €		
ZM 310/2	Fan unit: ZM 310/2 - RD 0 with Cemer motor: 2.2 kW-3000-2P-Ex4	HBMA000465	RD 0	800 - 2150	1565 - 1010	2,2	2	Solid materials	721 €		
ZM 350/2	Fan unit: ZM 350/2 - RD 0 with Cemer motor: 4 kW-3000-2P-Ex4	HBMA000469	RD 0	1400 - 3500	2055 - 1150	4	2	Solid materials	1.003 €		
ZM 350/2R	Fan unit: ZM 350/2R - RD 0 with Cemer motor: 3 kW-3000-2P-Ex4	HBMA000471	RD 0	1100 - 2500	1770 - 1270	3	2	Solid materials	934 €		
ZM 400/2	Fan unit: ZM 400/2 - RD 0 with Cemer motor: 7.5 kW-3000-2P-Ex4	HBMA000473	RD 0	2500 - 5400	2570 - 1340	7,5	2	Solid materials	1.387 €		
ZM 400/2R	Fan unit: ZM 400/2R - RD 0 with Cemer motor: 5.5 kW-3000-2P-Ex4	HBMA000475	RD 0	1800 - 4300	2335 - 1400	5,5	2	Solid materials	1.311 €		
ZM 450/2	Fan unit: ZM 450/2 - RD 0 with Cemer motor: 11 kW-3000-2P-Ex4	HBMA000477	RD 0	2900 - 7100	3240 - 2000	11	2	Solid materials	2.089 €		
ZM 450/2R	Fan unit: ZM 450/2R - RD 0 with Cemer motor: 9.2 kW-3000-2P-Ex4	HBMA000479	RD 0	2900 - 6200	2995 - 1910	9,2	2	Solid materials	873 €		

! All stock fans are supplied with front support.

VM fans



- **Field of operation :**
Low-medium capacity / high-very high pressure.
- **Fan wheel type :**
Bent vanes or reversed vanes with cover.
- **Applications :**
Suction and conveyance of clean air. With material not transiting through fan for pneumatic transport, dust, drying, pressurizing and cooling.
- **Technical specifications :**
Air volumes : 360 up to 110.000 m³/h.
Total pressure : 100 up to 2.200 daPa.

Fan model	Description	Article code	Fan orientation	Air volume [m ³ /h]	Static Pressure [Pa] _{st}	Installed motor [kW]	Number of poles	Applica-tion	Price
				Min. - Max.	Max. - Min.				
VM 350/2	Fan unit: VM 350/2 - RD 0 with Cemer motor: 1.1 kW-3000-2P-Ex4	HBMA000281	RD 0	400 - 1550	2090 - 750	1,1	2	Smoke, fine dust	737 €
VM 350/2R	Fan unit: VM 350/2R - RD0 with Cemer motor: 0.75kW-3000-2P-Ex4	HBMA000283	RD0	300 - 1250	1800 - 745	0,75	2	Smoke, fine dust	719 €
VM 400/2	Fan unit: VM 400/2 - RD 0 with Cemer motor: 2.2 kW-3000-2P-Ex4	HBMA000285	RD 0	600 - 2400	2870 - 910	2,2	2	Smoke, fine dust	885 €
VM 400/2	Fan unit: VM 400/2 - LG 0 with Cemer motor: 2.2 kW-3000-2P-Ex4	HBMA000286	LG 0	600 - 2400	2870 - 910	2,2	2	Smoke, fine dust	885 €
VM 400/2R	Fan unit: VM 400/2R - RD 0 with Cemer motor: 1.5 kW-3000-2P-Ex4	HBMA000287	RD 0	500 - 1850	2370 - 970	1,5	2	Smoke, fine dust	863 €
VM 450/2	Fan unit: VM 450/2 - RD 0 with Cemer motor: 4 kW-3000-2P-Ex4	HBMA000289	RD 0	850 - 3500	3595 - 1005	4	2	Smoke, fine dust	1.247 €
VM 450/2R	Fan unit: VM 450/2R - RD 0 with Cemer motor: 3 kW-3000-2P-Ex4	HBMA000291	RD 0	700 - 2800	3115 - 1130	3	2	Smoke, fine dust	1.178 €
VM 500/2	Fan unit: VM 500/2 - RD 0 with Cemer motor: 5.5 kW-3000-2P-Ex4	HBMA000293	RD 0	1150 - 4200	4500 - 2200	5,5	2	Smoke, fine dust	1.546 €

! All stock fans are supplied with front support.

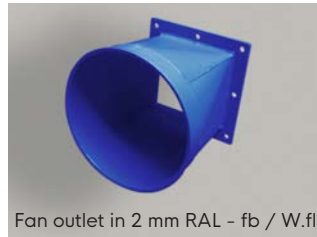
Accessories



Fan inlet in 1 mm galva - fb / L.fl



Fan outlet in 1 mm galva - fb / D.fl



Fan outlet in 2 mm RAL - fb / W.fl

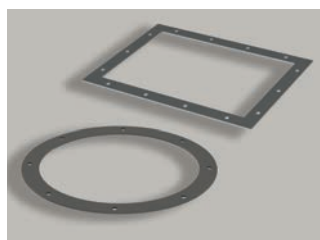
- Fan inlet prices include loose flange (L.fl)
- Fan outlet prices for 1 mm include direct flange (D.fl)
- Fan outlet prices for 2 mm include welded flange (W.fl)

Size	Inlet - Galva 1 mm - fb / L.fl	Inlet - RAL 2 mm - fb / L.fl	Inlet - AISI 304 2 mm - fb / L.fl
130x4	78 €	123 €	370 €
145x8	84 €	134 €	403 €
165x8	84 €	146 €	422 €
185x8	95 €	168 €	470 €
205x8	95 €	185 €	499 €
228x8	106 €	196 €	529 €
255x8	112 €	230 €	597 €
285x8	118 €	263 €	684 €
320x8	140 €	291 €	728 €
360x8	146 €	336 €	840 €
405x12-8	185 €	398 €	954 €
455x12-8	213 €	487 €	1.169 €
505x12-8	230 €	543 €	1.249 €
565x12-16	263 €	588 €	1.352 €
635x12-16	314 €	784 €	1.725 €
715x16	370 €	885 €	1.947 €
805x16	414 €	958 €	2.011 €
905x16	498 €	1.226 €	2.575 €
1007x24	678 €	1.512 €	3.024 €
1130x24	784 €	1.686 €	3.371 €
1260x24	On request	On request	3.641 €
1420x32	On request	On request	3.932 €
1610x32	On request	On request	4.247 €
1810x32	On request	On request	4.586 €
2010x32	On request	On request	4.953 €

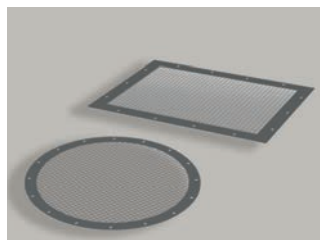
Size	Outlet - Galva 1 mm - fb / D.fl	Outlet - RAL 2 mm - fb / W.fl	Outlet - AISI 304 2 mm - fb / W.fl
95x68	106 €	129 €	386 €
105x76	112 €	179 €	538 €
117x85	112 €	190 €	552 €
131x95	129 €	224 €	627 €
146x105	129 €	252 €	680 €
166x117	151 €	274 €	741 €
185x131	151 €	308 €	801 €
124x103	168 €	375 €	976 €
207x148	179 €	370 €	924 €
231x166	190 €	437 €	1.092 €
258x185	190 €	437 €	1.048 €
288x205	213 €	487 €	1.169 €
322x229	218 €	515 €	1.185 €
361x256	218 €	532 €	1.224 €
404x288	230 €	571 €	1.257 €
453x322	246 €	588 €	1.294 €
507x361	246 €	622 €	1.305 €
569x404	314 €	722 €	1.517 €
638x453	325 €	767 €	1.534 €
715x507	375 €	784 €	1.568 €
801x569	476 €	1.126 €	1.693 €
898x638	538 €	1.316 €	1.829 €
1007x715	907 €	1.674 €	1.975 €
1130x801	1.008 €	2.016 €	2.133 €
1267x898	On request	On request	2.304 €
1421x1007	On request	On request	On request
1593x1130	On request	On request	On request
1786x1267	On request	On request	On request
2003x1421	On request	On request	On request
2248x1593	On request	On request	On request
2521x1786	On request	On request	On request
2810x2003	On request	On request	On request

! Please contact us for stock availability.

Inlet accessories



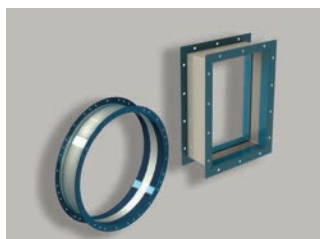
INF & OUF counter-flanges



RETA & RETEM protection grills

Size	INF	GA1	GA3	RETA
130x4	21 €	84 €	244 €	31 €
145x8	24 €	95 €	244 €	35 €
165x8	27 €	103 €	244 €	39 €
185x8	• 27 €	• 106 €	• 244 €	• 39 €
205x8	• 29 €	• 113 €	• 244 €	• 45 €
228x8	• 36 €	• 128 €	• 244 €	• 53 €
255x8	• 41 €	• 141 €	• 244 €	• 59 €
285x8	• 43 €	• 151 €	• 244 €	• 63 €
320x8	• 48 €	• 160 €	• 244 €	• 69 €
360x8	• 52 €	• 169 €	• 258 €	• 74 €
405x12-8	• 59 €	• 187 €	• 287 €	• 83 €
455x12-8	• 63 €	• 198 €	• 318 €	• 88 €
505x12-8	• 70 €	• 217 €	• 344 €	• 97 €
565x12-16	• 77 €	• 248 €	• 402 €	• 105 €
635x12-16	• 97 €	• 293 €	• 447 €	• 127 €
715x16	• 119 €	• 348 €	• 505 €	• 150 €
805x16	• 139 €	• 397 €	• 574 €	• 169 €
905x16	• 171 €	• 471 €	• 645 €	• 206 €
1007x24	• 195 €	• 531 €	• 718 €	• 237 €
1130x24	• 231 €	• 630 €	• 832 €	• 309 €
1260x24	279 €	750 €	1.005 €	389 €
1420x32	• 329 €	• 859 €	• 1.147 €	• 476 €
1610x32	400 €	1.023 €	1.436 €	601 €
1810x32	479 €	1.204 €	1.695 €	713 €
2010x32	553 €	1.375 €	1.883 €	956 €

Outlet accessories



GA3 & GP3 flexible connections



GP1 flexible connection

Size	INF	GA1	GA3	RETA
95x68	13 €	62 €	204 €	24 €
105x76	13 €	62 €	204 €	24 €
117x85	13 €	63 €	204 €	27 €
131x95	13 €	63 €	204 €	29 €
146x105	• 17 €	• 72 €	• 224 €	• 36 €
166x117	• 17 €	• 73 €	• 224 €	• 39 €
185x131	• 21 €	• 81 €	• 224 €	• 41 €
124x103	21 €	79 €	244 €	20 €
207x148	• 24 €	• 88 €	• 244 €	• 29 €
231x166	• 25 €	• 91 €	• 244 €	• 36 €
258x185	• 27 €	• 96 €	• 244 €	• 39 €
288x205	• 27 €	• 97 €	• 244 €	• 41 €
322x229	• 35 €	• 115 €	• 244 €	• 41 €
361x256	• 36 €	• 118 €	• 244 €	• 45 €
404x288	• 48 €	• 144 €	• 258 €	• 59 €
453x322	• 59 €	• 168 €	• 287 €	• 69 €
507x361	• 69 €	• 190 €	• 318 €	• 76 €
569x404	• 73 €	• 205 €	• 344 €	• 84 €
638x453	• 88 €	• 238 €	• 375 €	• 92 €
715x507	99 €	264 €	402 €	99 €
801x569	• 118 €	• 308 €	• 431 €	• 104 €
898x638	• 140 €	• 357 €	• 505 €	• 123 €
1007x715	• 167 €	• 416 €	• 574 €	• 146 €
1130x801	199 €	489 €	718 €	185 €
1267x898	231 €	560 €	861 €	238 €
1421x1007	251 €	609 €	1.147 €	295 €
1593x1130	270 €	660 €	1.578 €	371 €
1786x1267	319 €	770 €	1.861 €	433 €
2003x1421	382 €	909 €	2.233 €	511 €
2248x1593	444 €	1.053 €	2.500 €	603 €
2521x1786	524 €	1.231 €	2.801 €	711 €
2810x2003	619 €	1.442 €	3.137 €	840 €

• Stock articles

Silent blocks



Fan size	RM - RL - RH - GR - G F - CA - ZM - Z				VM - ZB - VI - VG				VP - ZA - VC - VA			
	Model	Qty	Thread size	Unit price	Model	Qty	Thread size	Unit price	Model	Qty	Thread size	Unit price
200	AV2-25	6	M6	• 14 €	-	-		-	-	-		-
220	AV2-25	6	M6	• 14 €	-	-		-	-	-		-
250	AV2-25	6	M6	• 14 €	-	-		-	-	-		-
280	AV2-25	6	M6	• 14 €	-	-		-	-	-		-
310	AV2-25	6	M6	• 14 €	-	-		-	AV2-25	6	M6	• 14 €
350	AV2-25	6	M6	• 14 €	AV2-25	6	M6	• 14 €	AV2-25	6	M6	• 14 €
400	AV2-40	6	M8	• 21 €	AV2-25	6	M6	• 14 €	AV2-25	6	M6	• 14 €
450	AV2-40	6	M8	• 21 €	AV2-40	6	M8	• 21 €	AV2-25	6	M6	• 14 €
500	AV2-40	6	M8	• 21 €	AV2-40	6	M8	• 21 €	AV2-40	6	M8	• 21 €
560	AVC-60	6	M10	• 28 €	AV2-40	6	M8	• 21 €	AV2-40	6	M8	• 21 €
630	AVC-60	6	M10	• 28 €	AV2-40	6	M8	• 21 €	AV2-40	6	M8	• 21 €
710	AVC-60	6	M10	• 28 €	AVC-60	6	M10	• 28 €	AVC-60	6	M10	• 28 €
800	AVC-60	6	M10	• 28 €	AVC-60	6	M10	• 28 €	AVC-60	6	M10	• 28 €
900	AVC-60	6	M10	• 28 €	AVC-90	6	M16	• 39 €	AVC-60	6	M10	• 28 €
1000	AVC-90	6	M16	• 39 €	AVC-90	6	M16	• 39 €	AVC-90	6	M16	• 39 €
1120	AVC-90	6	M16	• 39 €	-	-		-	AVC-90	6	M16	• 39 €
1250	AVC-120	6	M16	70 €	-	-		-	-	-		-
1400	AVC-120	6	M16	70 €	-	-		-	-	-		-

! All stock fans are assembled with a front support and require 6 silent blocks.

• Stock articles



Contacts

Formula Air The Netherlands
Head Office / Production / Sales
Bosscheweg 36
5741 SX Beek en Donk,
The Netherlands
+31 492 45 15 45
info-nl@formula-air.com

Formula Air Belgium
Logistics / Sales
Rue des Dizeaux 4
1360 Perwez
Belgium
+32 81 23 45 71
info-be@formula-air.com

Formula Air Baltic
Production / Sales
P. Motiekaičio g. 3
LT-77104 Šiauliai
Lithuania
+370 41 54 04 82
info-lt@formula-air.com

Formula Air Germany
Sales
Dr.-Oetker Straße 10
54516 Wittlich
Germany
+49 6571 269860
info-de@formula-air.com

Formula Air France – North
Sales
Zac de la Carrière Dorée
BP 105, 59310 Orchies
France
+33 9 72 15 29 38
contact-fr@formula-air.com

Formula Air France – East
Sales
2, rue Armand Bloch
25200 Montbéliard
France
+33 9 72 15 29 38
contact-est@formula-air.com

Formula Air France – West
Sales
6, avenue des Lions
44800 Saint-Herblain
France
+33 9 72 15 29 38
contact-ouest@formula-air.com

Formula Air France – South
Sales
Chemin de Peyrecave
09600 Regat
France
+33 9 72 15 29 38
contact-sud@formula-air.com

Formula Air Vietnam
Production / Sales
#33, Lot 2, Den Lu 1
Hoang Mai District, Hanoi
Vietnam
+84 (24) 38 62 68 01
info@vinaduct.com

Formula Air Nordic
Sales
Stortorget 17
211 22 Malmö
Sweden
+46 40 654 06 10
info-scan@formula-air.com

Formula Air Export
Sales
Rue des Dizeaux 4
1360 Perwez
Belgium
+32 81 23 45 71
info-be@formula-air.com